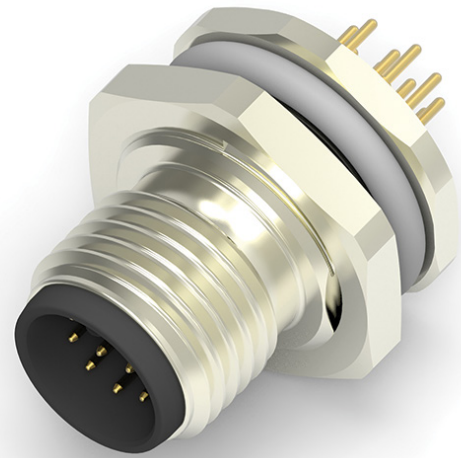


INTRODUCING M12 PCB/PANEL CONNECTORS 8/12 PIN

- Compact design with high density connection
- Plug-&-Play mating for easy and fast installation



TE Connectivity (TE) extends its M12 connector portfolio. The latest connectors, with 8 and 12 positions for direct mounting onto PCBs and panels, complement field-installable connectors and cable assembly solutions. The new connectors, which are UL certified and have an IP67 rating (indicating that they are dust-tight and water-proof down to a depth of at least one meter), ensure efficient, high-quality and reliable signal transmission. The high pin density on the 12-pin connector in particular provides customers with a very compact design.

KEY BENEFITS

- Compact design with high density connection
- Plug-&-Play mating for easy and fast installation
- Quick and reliable connection for PCB and panel mount

APPLICATIONS

- Machinery
- Automation Integration
- Vision System
- Semiconductor manufacturing
- Factory automation machines

ELECTRICAL

- Voltage: 30V(AC/DC)
- Rated Current:
 - 2.0A for 8 pin
 - 1.5A for 12 pin

LEARN MORE

[M12 PCB/Panel Connectors 8/12 Pin Flyer](#)
[M12 PCB/Panel Connectors 8/12 Pin Part list](#)
[M12 PCB/Panel Connectors 8/12 Pin Product Page](#)

MATERIALS

- M12 Body: Copper Alloy
- M12 Housing: Nylon
- Contact: Copper Alloy

MECHANICAL

- Seal Rating: IP67 (When fully mated)
- Operating Temperature: -40 -85°C
- Durability: 100 cycles

STANDARDS & SPECIFICATIONS

- Product Specification: 108-106140
- Application Specification: 114-137144
- IEC 61076-2-101
- UL 2238