

# What's New?

## VFA Software Releases of July 12, 2014

- VFA.facility® 10.5.3
- VFA FacilityView™ 1.1.4
- VFA Data Manager 1.5

### VFA.facility®

---

#### 1. Updates to Set Up Instructions

- *Supported Versions of Internet Explorer* Set up instructions have been updated for the currently supported versions of Internet Explorer, **IE 10 and 11**.
- *FacilityView Supported Browsers* Information on supported browsers for FacilityView has been added to the VFA.facility set up instructions.

#### 2. Automatic Population of Asset Map Longitude and Latitude

If an Asset has a mappable address, then it's "Map Latitude" and "Map Longitude" fields will be automatically updated when the address is entered.

- A.** The first time you enter a mappable address, the "Map Latitude" and "Map Longitude" fields are populated with coordinate information.

Note a mappable address may require selection of a "Country" value.

- B.** To change existing coordinates (for example, if you subsequently change the address), click the icon to their right. Coordinates will be repopulated based on the address.

The screenshot shows a form titled "Location" with the following fields and values:

Address 1	1111 Blanshard St
Address 2	
City	Victoria
State/Province/Region	BC
Zip/Postal Code	V8W 2H7
Country	[none selected]
Map Longitude	-123.3623606919997
Map Latitude	48.42456125400048

Annotations: A red box highlights the "Map Longitude" and "Map Latitude" fields. A red circle with the letter 'A' is next to the "Map Longitude" field, and a red circle with the letter 'B' is next to the "Map Latitude" field. A small green icon with a white arrow is located between the two coordinate fields.

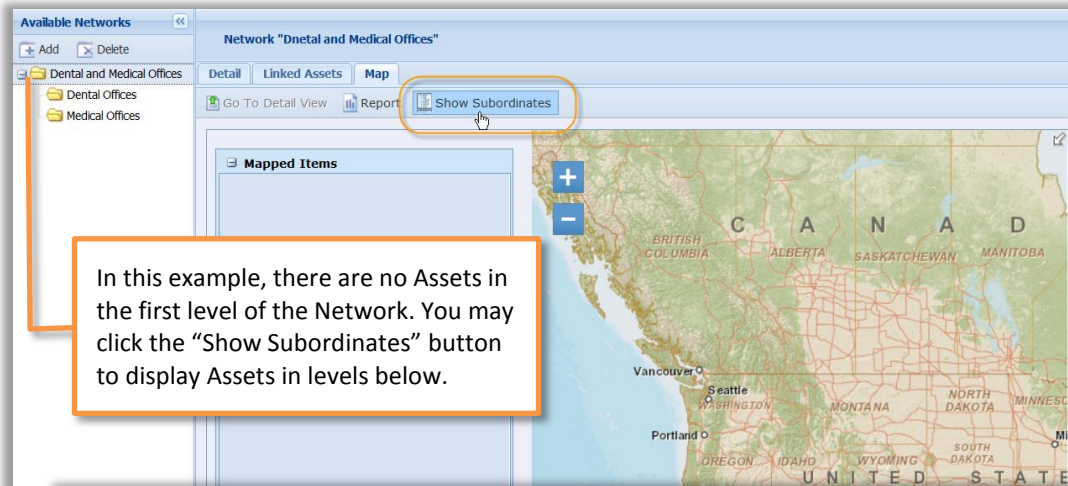
These coordinates will be used when viewing Assets on maps in VFA.facility and FacilityView.

Note if you have several existing Assets without coordinates, the fastest way to generate them is to select the records in a Region, Campus or Asset List View and then click the "Map" command. The coordinates will be added as the map is generated. If you have a large number of assets, this process may take a minute.

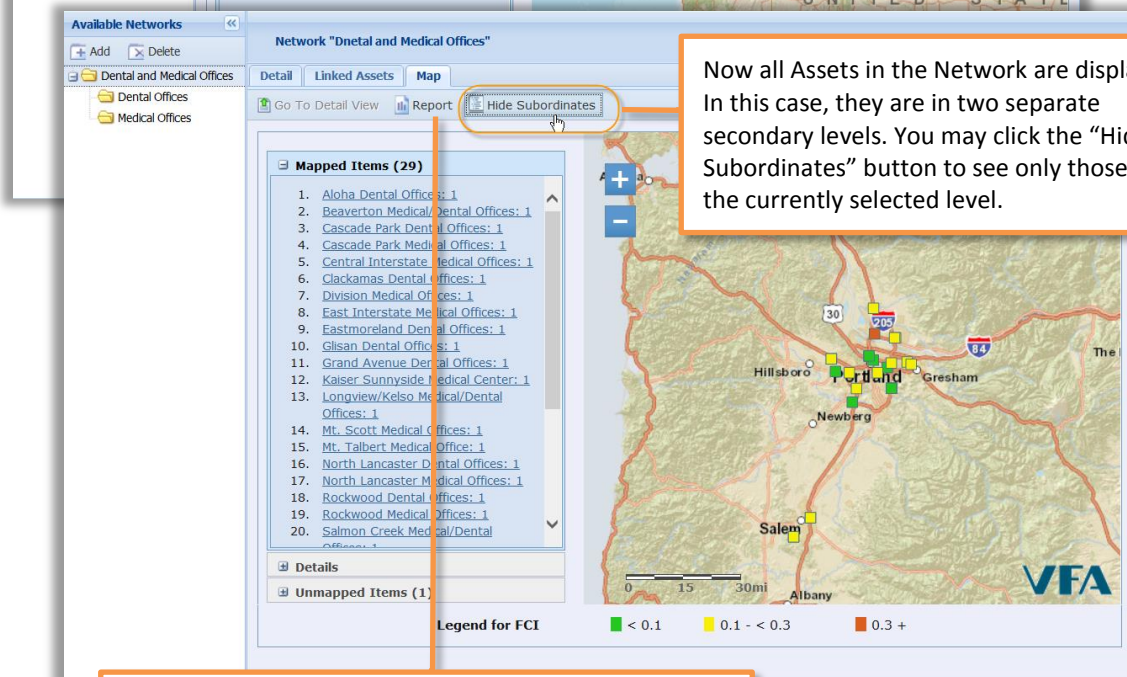
#### 3. Mapping and Reporting on Multiple Network Levels

In the Network Manager "Map" tab, you may optionally view a map including all Assets at the selected Network level as well as any levels below. Note that any report you generate includes all Assets in all levels of a Network.

- Click the "Show Subordinates" button on the Map tab to display Assets at the selected Network level as well as any levels below.
- When subordinates are displayed, click the "Hide Subordinates" button to display only those Assets in the Network level that is currently selected.



In this example, there are no Assets in the first level of the Network. You may click the "Show Subordinates" button to display Assets in levels below.



Now all Assets in the Network are displayed. In this case, they are in two separate secondary levels. You may click the "Hide Subordinates" button to see only those in the currently selected level.

Clicking the "Report" command generates a report that includes all Assets in all levels of a Network (both mapped and unmapped).

**VFA** Network Summary Report  
By Primary Network Name

**Network Structure**

Levels	Network Name(s)	Network Type	Assets (Custom) in Network	Total Replacement Value of Assets (Custom) in Network	Total FCI of Assets (Custom) in Network	Total RI of Assets (Custom) in Network
Overview	Dental and Medical Offices	None	30	726,986,437	0.15	0.17
Level 1	Dental and Medical Offices	None	0	0	0.00	0.00
Level 2	Dental Offices	Cooling Distribution: Chilled Water Piping	14	121,879,525	0.18	0.20
Level 2	Medical Offices	None	19	690,300,255	0.15	0.17

4. Corrected Issues

Module/Tool	Corrected Issue
<i>Configure</i>	<ul style="list-style-type: none"> <li>In FCI Settings, Requirement Categories that are part of the new "Optimization" group were incorrectly marked as defaults (with an asterisk). On blank site templates, these values were checked.</li> </ul>
<i>Assets</i>	<ul style="list-style-type: none"> <li>When selecting multiple Systems or Actions and editing their line items in the multi-select Detail View, correct locations factors were sometimes incorrectly applied when the items had different cost source locations.</li> <li>In the System Template Library, BCIS line items in custom templates were incorrectly saved with an RSMeans cost source.</li> <li>French content in various parts of the Assets module, including Views, left navigation and the Template Library, had some incorrect diacritical marks and other minor translation problems.</li> </ul>
<i>Funding</i>	<ul style="list-style-type: none"> <li>French content in the Funding module and its reports had some incorrect diacritical marks and other minor translation problems.</li> </ul>
<i>Reports</i>	<ul style="list-style-type: none"> <li>The Asset Funding Needs Report was not included in the Report Center Standard Reports.</li> <li>In the Executive Portfolio Summary and Executive Benchmark reports, the FCI window was incorrectly calculated for sites with Fiscal Year Start of January 1.</li> <li>Classic reports with checkbox selections parameters did not always apply the selections.</li> </ul>
<i>Multiple</i>	<ul style="list-style-type: none"> <li>Context-sensitive help links were broken.</li> </ul>

VFA FacilityView

- Nightly Downtime Minimized** Each client's FacilityView site is unavailable only during the period updates are being applied for that site. For the average site, this period will be less than 10 minutes. Site updates begin at 11 pm Eastern.
- Update Alert Message** If a user tries to access their FacilityView site when the nightly update is running, they will be alerted that the update is in process (rather than simply being unable to log in).
- Corrected Issues**
  - Assets with Single Requirements* In the Detail View for an Asset with only one Requirement, Requirement information, which was previously omitted, displays in the "Requirements" panel.
  - Map Colors* FacilityView now displays the same line and polygon colors for an Asset as shown in VFA.facility.



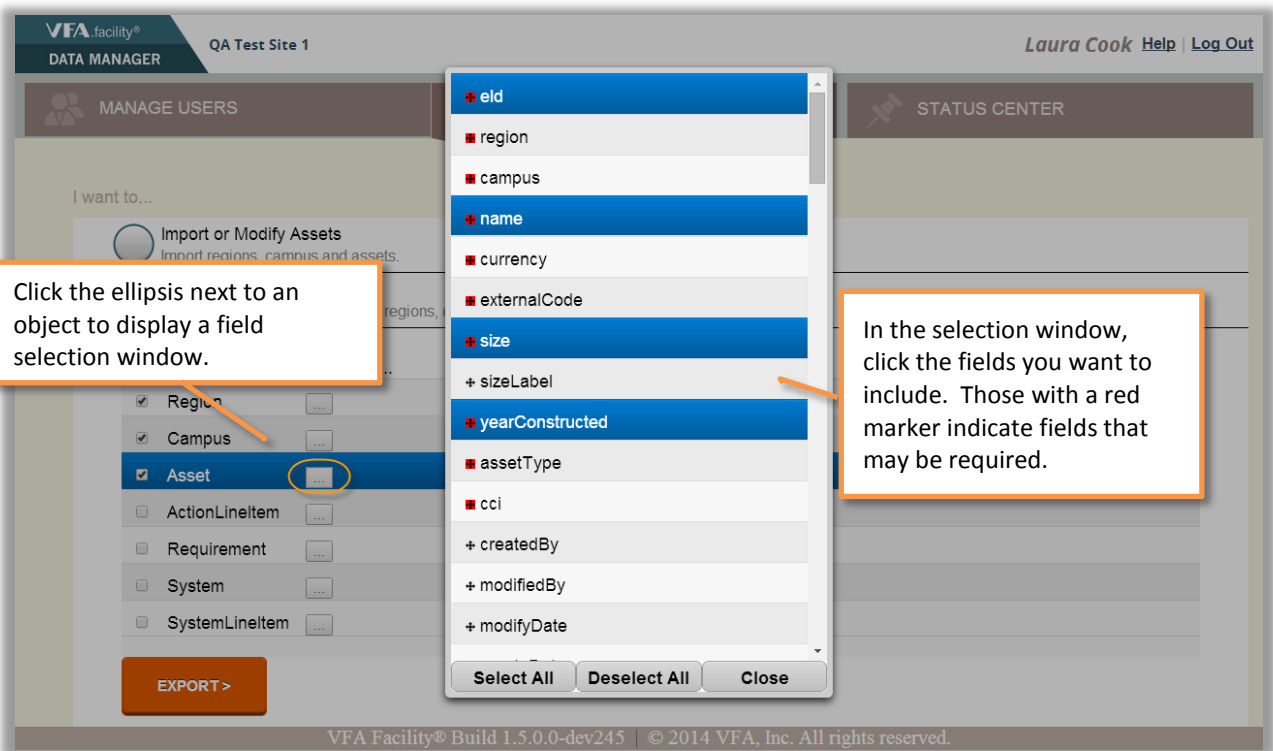
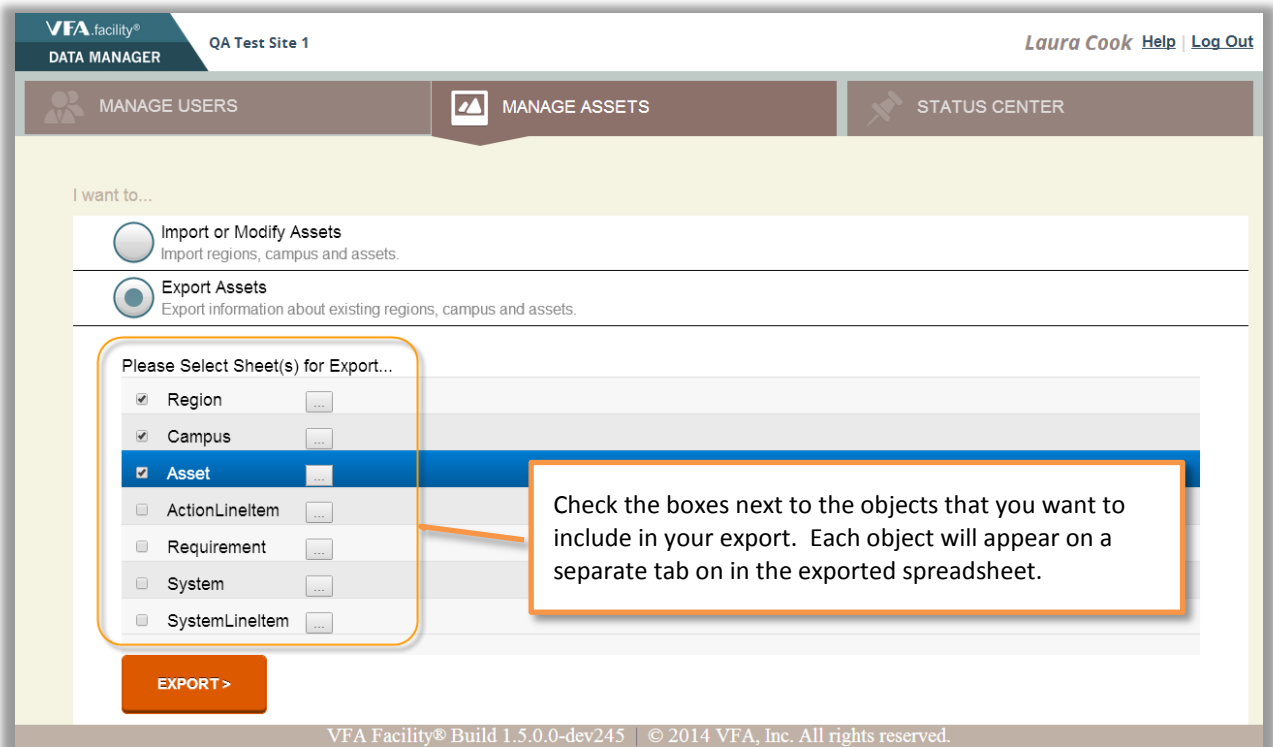
## VFA Data Manager

The Data Manager now includes support for Systems, Requirements and Actions, with certain limitations, as summarized in the table below.

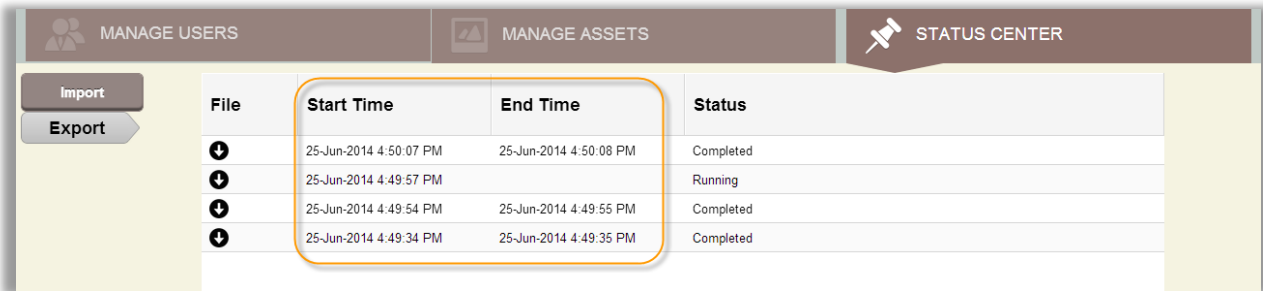
1. **Support for Systems and System Line Items** You may both import and export System records. If applicable, Renewal Requirements are created or modified based on your changes. You may import System Line Items, but you may not currently modify or export or existing line item data.
2. **Support for Requirements and Actions**
  - **Manually-created (non-Renewal) Requirements** may be both import and export, as may their associated Actions. You may import new line items associated with these Actions, but cannot currently export or modify existing line item data.
  - **System Renewal Requirements** You may export data about Renewal Requirements and their Actions, and modify existing, non-closed Renewal Requirements and/or their Actions. You cannot reopen a closed Renewal, or create new Renewals, since these are automatically generated by the application. You may import new line items associated with Renewal Actions, but you cannot currently export or modify existing line item data.

Object	Import (Create and/or Modify)	Export	Comments/Limitations
Region	✓	✓	
Campus	✓	✓	
Asset	✓	✓	
System <span style="background-color: #90EE90; padding: 2px;">NEW</span>	✓	✓	Renewal Requirements will be created or modified as applicable.
System Line Item <span style="background-color: #90EE90; padding: 2px;">NEW</span>	✓		You may <b>create</b> new line items, but not yet modify existing line items or export line item data.
Non-Renewal Requirement <span style="background-color: #90EE90; padding: 2px;">NEW</span>	✓	✓	
Non-Renewal Action <span style="background-color: #90EE90; padding: 2px;">NEW</span>	✓		You may create or modify Actions, but not yet export Action data. Available Action fields for import are part of the import template.
Non-Renewal Action Line Item <span style="background-color: #90EE90; padding: 2px;">NEW</span>	✓		You may <b>create</b> new line items, but not yet modify existing line items, or export line item data.
Renewal Requirement <span style="background-color: #90EE90; padding: 2px;">NEW</span>	✓	✓	You may <b>modify</b> existing, non-closed records. You cannot create a Renewal, or reopen a Renewal with a "Closed" Status.
Renewal Action <span style="background-color: #90EE90; padding: 2px;">NEW</span>	✓		Renewal Actions are automatically created based on their Systems. You may modify existing Actions, and create or modify secondary ones. You cannot yet export Action data. Available Action fields for import are part of the import template.
Renewal Action Line Item <span style="background-color: #90EE90; padding: 2px;">NEW</span>	✓		You may <b>create</b> new line items, but not yet modify existing line items, or export line item data.

- 3. **Field Selections** When exporting data, you may select the specific objects that you wish to include, as well as the fields that you wish to include for each object. Fields that are required when creating a new record are indicated by a red marker next to the field name.



**4. Job Times in Status Center** For exports, the Status Center displays the start date and time for each request. For Completed requests, the end time is also displayed.



**5. Known Issues**

The following are known problems in this release which will be corrected in a subsequent release.

Issue	Description	Planned Timing
Import of workbook that includes a sheet with column headings only does not complete.	<ul style="list-style-type: none"> <li>If you import a workbook containing one or more sheets that have column headings but no record data, the import job never completes. The Status center shows its status as "Running", and a blank job summary is emailed to the user.</li> </ul>	Next release
Import of a System or Requirement "Date Inspected" or Requirement "Override Action Date" from export sheet sets the value one day earlier.	<ul style="list-style-type: none"> <li>If you export System data that includes "Date Inspected" or a Requirement data that includes "Date Inspected" or "Override Action Date" and subsequently use the exported worksheet to import changes to System or Requirement records, the date values set for these fields will be one day earlier than that on the spreadsheet. Note this issue does not occur in custom properties that use dates.</li> <li><i>Workaround:</i> Reformat these fields in the import sheet to use the Excel default date format.</li> </ul>	Next release
Import of a System with an unformatted number custom property with decimal place values fails.	<ul style="list-style-type: none"> <li>If you import one or more System records that include a custom property configured with the Control Type "Text / Unformatted Number", the import will fail for any records in which the property's value uses decimal places. The error sheet will indicate that the value is invalid.</li> </ul>	Next release
Import of a System or Requirement containing a currency or text/number custom property with a zero value fails.	<ul style="list-style-type: none"> <li>If you import one or more Systems or Requirements that include a custom property configured with the Control Type "Text/Currency" or "Text/Number", the import will fail for any records in which the property's value is 0. The error sheet will indicate that the value is invalid.</li> </ul>	Next release
Requirements cannot be closed.	<ul style="list-style-type: none"> <li>If you import a non-closed Requirement with a value for Finish Date (in order to close the Requirement), the import fails for that record.</li> </ul>	Next release

Issue	Description	Planned Timing
Online help does not include documentation of newly support object fields.	<ul style="list-style-type: none"> <li>All object and field names for import are not included in online help. Refer to the separate reference guide for this information.</li> </ul>	Next release
Existing System and Action Line Items cannot be modified.	<ul style="list-style-type: none"> <li>Importing a System Line Item or Action Line Item sheet new values (that is, without existing EID values) will fail.</li> </ul>	Dependent on implementation of line item IDs planned for September maintenance release
Closed Requirements cannot be reopened.	<ul style="list-style-type: none"> <li>If you import a Requirement with a Status of "Closed", changing its Finish Date to null (in order to re-open the Requirement), the import fails for that record.</li> </ul>	TBD