

## VFA Site Linear Module

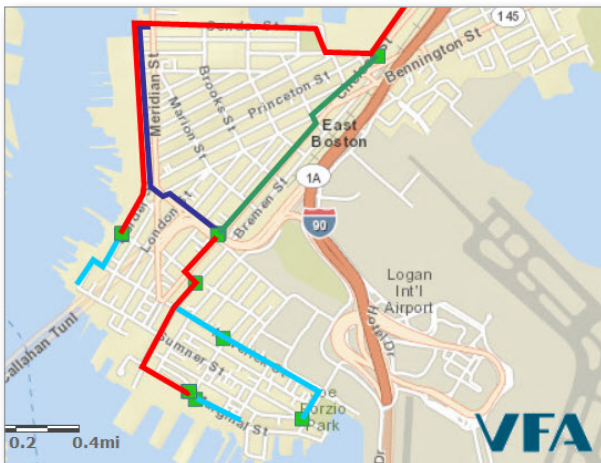
**INTEGRATE LINEAR ASSETS INTO YOUR FACILITIES CAPITAL PLANNING**

VFA's Site Linear module extends the power of VFA Software to address the unique needs of linear and infrastructure assets – assets such as steam, water, electrical distribution systems, sanitary and storm sewers, parking lots, pedestrian paving and more. Its integrated design provides a holistic approach that lets you optimize your capital planning and management decisions for both building and linear assets together. The Site Linear software can be used either directly by your assessment professionals or together with VFA's Assessment Services to provide you with a holistic facilities capital planning solution.

### BENEFITS

- Understand the condition of key infrastructure assets that support your day-to-day business operations, and identify specific areas of risk
- Evaluate your complete capital requirements, including both buildings and linear / infrastructure assets in your funding analyses to better understand short term and long term capital needs and trade-offs
- Streamline the collection and maintenance of linear asset data in multiple ways: leverage existing data, collect data via VFA's mobile technologies, or employ your own or 3rd party assessment professionals
- Effectively communicate condition and capital needs using maps, graphs and reports

Comprehensive facilities capital planning for both your buildings and site linear assets.



**Holistic Facilities Capital Planning** - Easily collect, track, analyze, report on, and maintain data related to both building and linear assets in the same repository using a common set of tools.

**Network Summary Report**  
By Primary Network Name

#### Network Structure

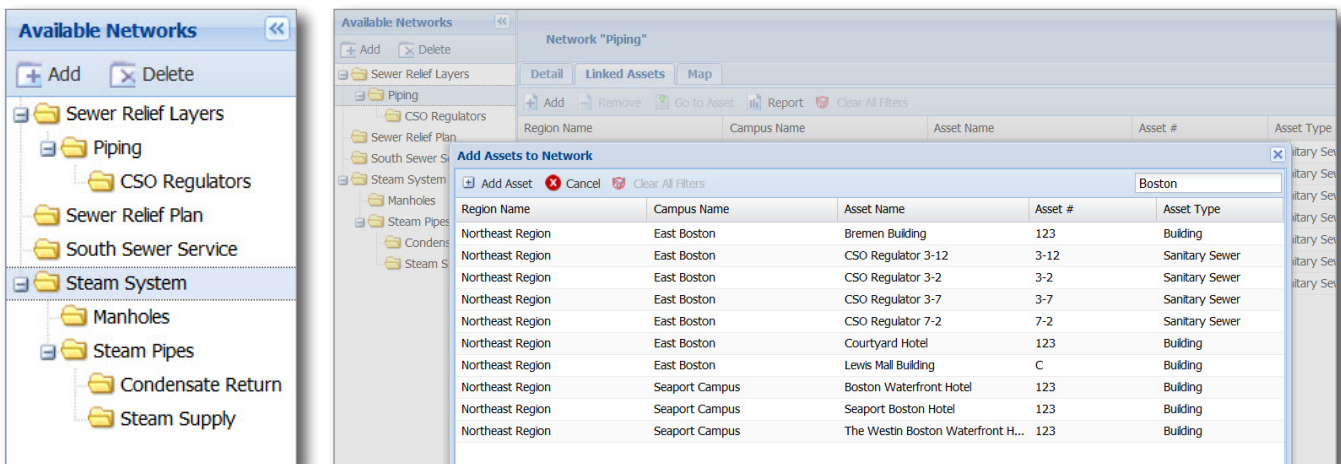
Levels	Network Name(s)	Network Type	Assets in Network	Total Replacement Value of Assets in Network	Total FCI of Assets in Network	Total RI of Assets in Network
Overview	Sewer Relief Layers	None	11	1,609,866	0.25	0.25
Level 1	Sewer Relief Layers	None	0	0	0.00	0.00
Level 2	Piping	None	7	322,575	0.37	0.37
Level 3	CSO Regulators	None	4	1,287,291	0.22	0.22

## KEY FEATURES

### Network Manager

At the heart of VFA's Site Linear module is a concept we call a Network. A Network is a collection of assets that you group together for analysis and reporting purposes. A network can contain all linear assets (such as multiple segments of steam pipe in a steam pipe network) or a combination of asset types (for example, a steam supply system along with the buildings it serves). VFA's Site Linear module makes it simple to create, manage, analyze and display Networks using the same repository and tools that you use for the rest of your VFA data.

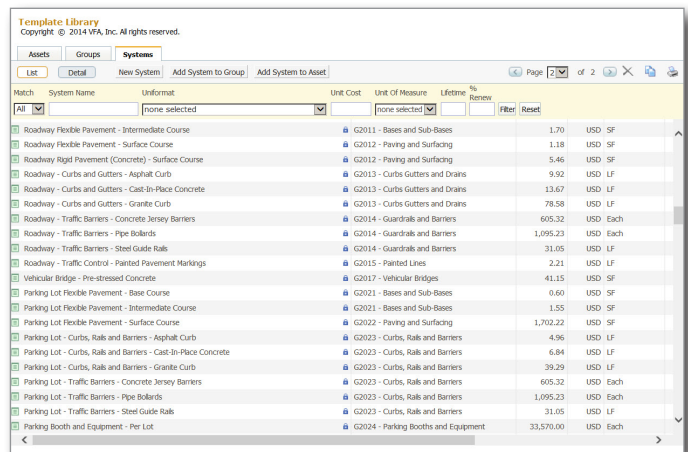
Within the VFA.facility Assets module, use the Network manager to group assets into multi-level Networks, view them on maps and report on Network value and condition using the Network Manager.



Create Networks with up to four levels of hierarchy and associate multiple assets with a network.

### Linear / Infrastructure System Templates

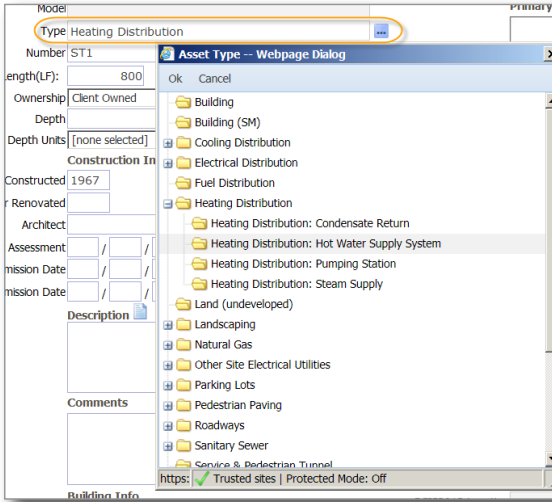
Easily associate linear Systems with an Asset using System Templates that include many elements and sub-elements found in Unifomat G "Sitework" as well as other linear systems.



Select from a range of System Templates related to sitework.

## Expanded Asset Types

When creating an Asset, choose from a two-level hierarchy of over 75 asset types, each with type-specific properties.

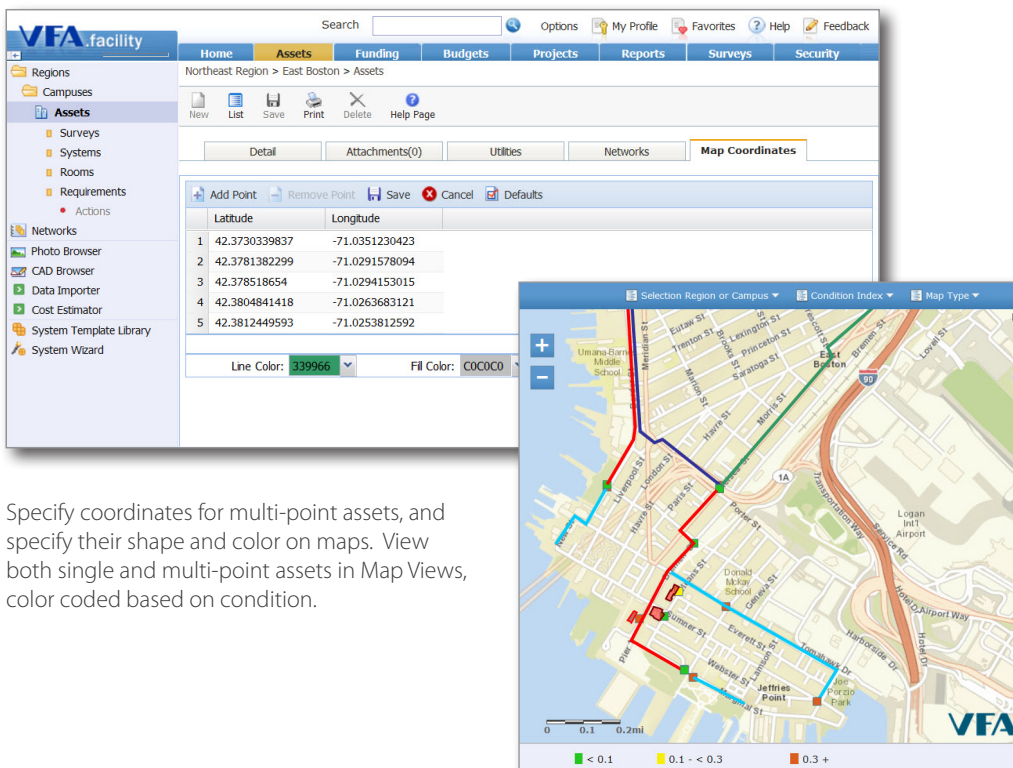


Type	Parking Lots
Number	P2
Area(SF):	650
Ownership	Client Owned
Surface Type	Bituminous pavement
Parking Lot Use	Visitors
Parking Lot Spaces	35

In the details tab, select from a two-tiered list of Asset Types, which have been updated and expanded to encompass many elements and sub-elements. Each Type value has associated properties. For example, the Type "Parking Lots" includes "Surface Type," "Parking Lot Use," and "Parking Lot Spaces."

## Support for Multi-Point Asset Visualization

Specify coordinates for linear assets, and view them together with point assets in Map Views.



Specify coordinates for multi-point assets, and specify their shape and color on maps. View both single and multi-point assets in Map Views, color coded based on condition.



**Funding & Budget Integration**  
 Create Funding scenarios and Budget strategies that incorporate key properties of linear assets.

### Network Reports

Generate reports on Networks, including value, condition, assets included, network hierarchy structure and more.

VFA		Network Summary Report By Primary Network Name				
Network Structure						
Levels	Network Name(s)	Network Type	Assets in Network	Total Replacement Value of Assets in Network	Total FCI of Assets in Network	Total RI of Assets in Network
Overview	Sewer Relief Layers	None	11	1,609,866	0.25	0.25
Level 1	Sewer Relief Layers	None	0	0	0.00	0.00
Level 2	Piping	None	7	322,575	0.37	0.37
Level 3	CSO Regulators	None	4	1,287,291	0.22	0.22

The Network Summary report allows you to report on Networks by name or type, and understand value and condition of the network as a whole as well as its various levels and assets.

### About VFA, Inc.

VFA helps organizations strategically manage their facility portfolios with Capital Planning and Management Solutions (CPMS™) that combine software, assessment services and business process consulting. Organizations in the corporate, education, healthcare and government sectors use VFA solutions to manage over four billion square feet of real estate.

Contact us to learn how VFA can help your organization to optimize its facilities investment.

US: (800) 693-3132

Canada: (888) 685-3757

UK: +44 (0)118 900 1695

Web: www.vfa.com

Email: info@vfa.com

### Mobile Survey Support

Use VFA Auditor surveys to assess linear assets, with automated creation of requirements leveraging VFA facility System model content. During field assessments, choose from over 200 Site Linear system models, across 60+ Uniformat G categories, in the VFA Auditor's library, and select from hundreds of typical deficiencies.

