

Troux Enterprise Portfolio Management Suite

Troux Enterprise Portfolio Management Suite

When it comes to defining and implementing a strategy, businesses have always had tremendous decision-making challenges due to the lack of complete, accurate and timely information. Enterprise Portfolio Management solutions from Troux help companies make more informed strategy decisions by 'connecting' business context to IT. Troux solutions provide a strategic, 360 degree view of the IT landscape in the context of business. The result: enterprises gain clear line-of-sight and can instantly see how current and future technology strategy decisions impact an organization before they are implemented.

Key Benefits

- Help businesses make more informed decisions that reduce cost, decrease risk and improve agility
- Delivers 360° view of the IT landscape in the context of the business
- Provides decision-makers with the information required to precisely address fundamental business issues
- Uses common business language to organize information into intuitive portfolios and simplify business analysis

- Manages the relationships between Business and IT portfolios to illustrate the impact a decision has across the entire enterprise

It's All Connected

Nobody needs to be reminded that today's business climate is evolving faster than ever. The dynamic nature of competitive markets and the rapid introduction of disruptive technologies place a huge burden on businesses. Today, more than ever, businesses must be agile, innovative, and responsive to customer demands.

This fast pace of change requires a fundamental shift in the way enterprises think about and plan for change. Static and siloed models, one-time snapshots of the as-is state, and disconnected strategic planning processes often based on collections of Excel, Visio, and PowerPoint documents are no longer sufficient. Decisions must be made with an understanding of the "connected" enterprise.

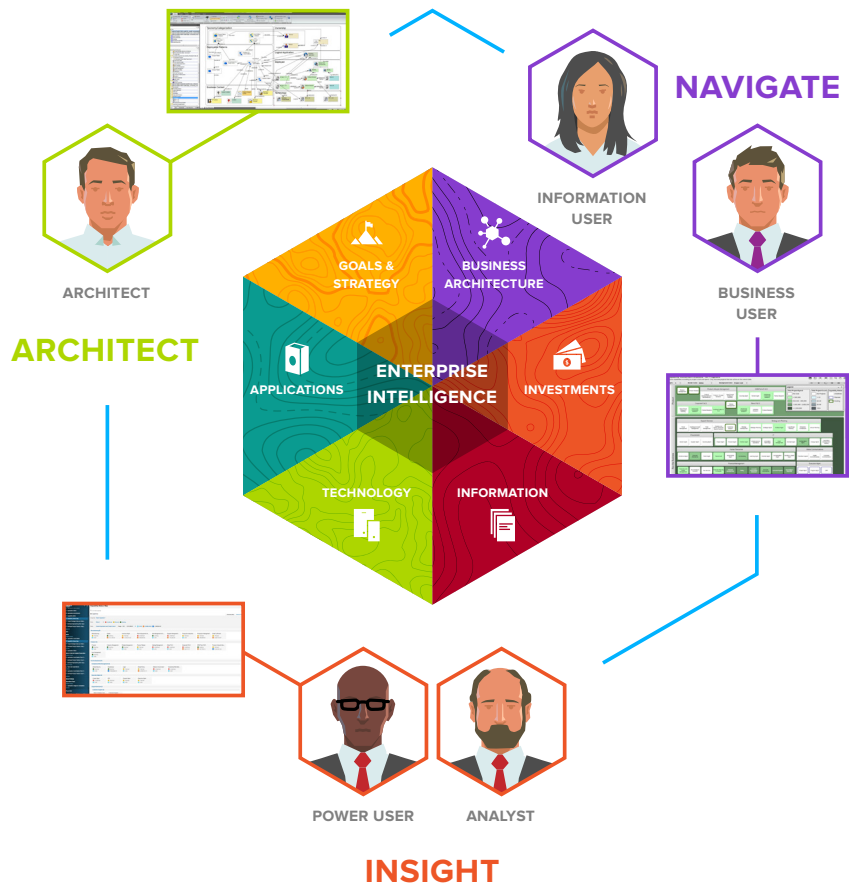
Troux has been at the forefront of this evolution with solutions that deliver transparency, insights, and management control across the connected set of enterprise portfolios that characterize a business.

As a result, Troux solutions help businesses make more informed decisions that synchronize IT with business goals leading to reduced costs, decreased risk and increased agility.

The Big Picture

Troux's approach helps decision-makers gain a better understanding of how decisions affect all the moving parts that make up the connected enterprise. Troux's solution provides better insights across the organization to ensure decision-making is done in a controlled manner within the context of the business and its associated strategies.

Troux EPM solutions illustrate how investments made in information, technology, applications, people, and processes support the goals and strategies defined by senior leadership.



Speaking the Language of Business

Troux solutions enable a movement from 'IT Portfolio Management' to a comprehensive 'Enterprise Portfolio Management' approach.

With Troux, enterprise IT-related information is categorized into four portfolios (Applications, Investments, Technology, Information) and Business related information into two portfolios (Business Goals and Strategy, Business Architecture).

Capturing and managing information in the context of these portfolios is a critical component in providing visibility and synchronization between business and IT investments.

This approach empowers businesses to analyze and make better decisions across a wide range of operational and transformational initiatives.

Troux EPM Family of Products and Key Features

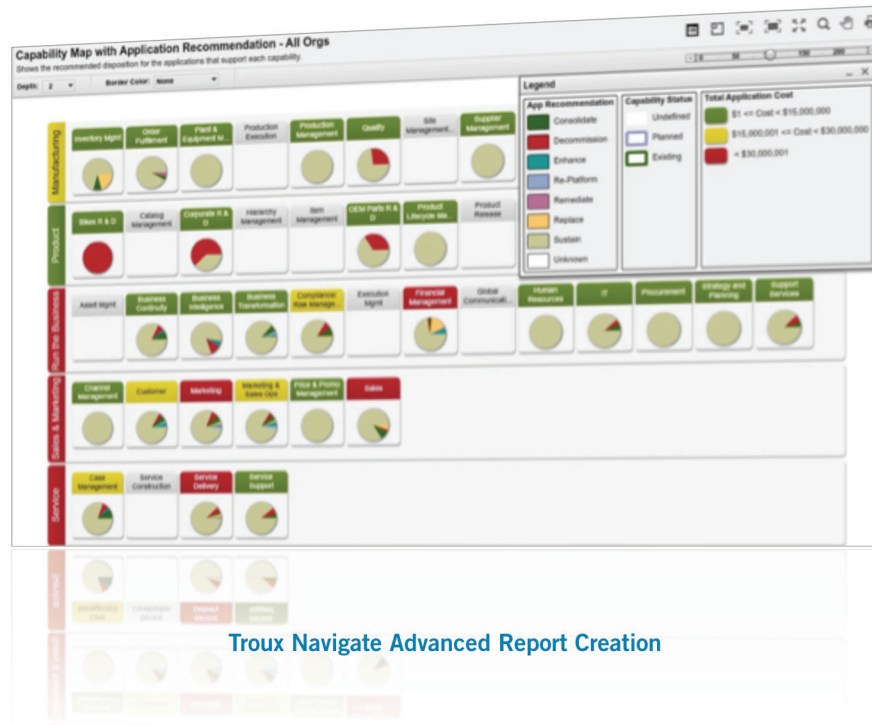
TrouxSource Platform

- Contains a best-in-class metamodel that provides a library of component and relationship types used to represent enterprise assets.
- Relationship types are based on the best practices of Global 2000 enterprises and government agencies, allowing organizations to model complex portfolios and define how those portfolios interrelate.

- Provides a centralized repository to store important enterprise data. This data can be viewed and edited through multiple products within the Troux suite.

- Enables the definition and enforcement of data quality policies that help business analysts and data stewards determine if there is enough data available to execute a report. Data quality policies identify what data is missing, eliminating the need to perform difficult data triage efforts.

- Delivers policy governance reports that list all data sources that are not in compliance. These policies ensure data stewards are complying with data governance rules.
- Provides data collection tools that facilitate and manage the import of key information from a variety of existing applications and systems.
- Supports the export of key data to 3rd party business intelligence tools or datamarts for additional reporting.



Troux Navigate Advanced Report Creation

- Supports the ability to browse, search, edit and report against data stored in Troux's centralized repository (TrouxSource).
- Provides the ability to cascade deeper into key reports to gain additional action-oriented details behind the summary values on a key indicator report.

Troux Insight

- Provides a powerful interactive and ad-hoc analysis engine for business analysts.
- Library of preconfigured visualizations called 'perspectives' help decision makers quickly analyze and identify risk areas, as well as opportunities for cost savings and investment re-alignment.
- Folder sharing and privacy settings simplifies the process of distributing analysis results and provides an intuitive collaboration environment for teams.

Troux Navigate

- Provides business analysts with an advanced report creation environment.
- Delivers a collection of standard reports that answer over 150 critical business questions to provide a comprehensive view of the IT landscape in the context of the business.
- Built-in data stewardship capabilities support the ability to federate the management and maintenance of information assets on both an organizational and individual level.

- Advanced stewardship and data editors streamline the ability to perform data management and maintenance data en masse for large data sets.

Troux Architect

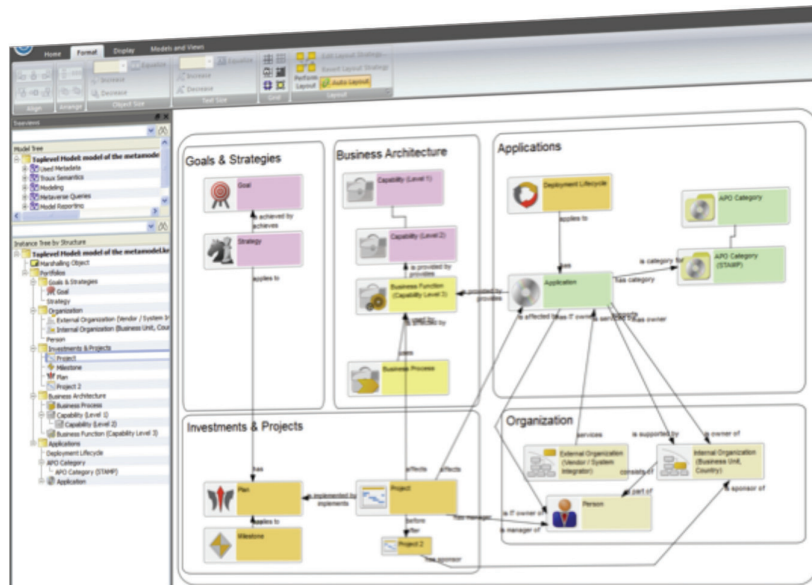
- Provides a visual modeling environment that allows enterprise architects to create models and quickly understand the connections and dependencies between different types of enterprise portfolio elements.
- Delivers rich visual models that represent the current state of organizations, processes, information, technologies and their relationships.
- Provides modeling and analysis capability that supports scenario-based alternative analysis and modeling of current to future state transformation.
- Ability to create new objects and relationships in the Troux repository (TrouxSource).

Troux On-Demand

- Troux EPM solutions are available On-Demand and can be deployed without up-front capital expenditures or integration costs.



Decide Right. Now.



Troux Architect Modeling Environment

On-Demand solutions provide all the software in a hosted environment that delivers the security, system management, and administration necessary that enable On-Demand Users to focus on business results instead of system operations.

Trox Professional Services

- Troux Professional Services help commercial organizations and government agencies achieve high performance by increasing the efficiency and effectiveness of their Enterprise Portfolio Management projects.
- Guided by a tested deployment methodology and process, Trox's suite of professional services includes planning and deployment, training, project management, and best-practices consulting – all designed to help enterprises accelerate time-to-value and become self-sufficient with our solutions.

Learn more at troux.com