

splunk® > live!

APRIL 20, 2017 | MINNEAPOLIS, MN

splunk>live!

APRIL 20, 2017 | MINNEAPOLIS, MN

Happy Apps, Happy Users: Using Splunk for APM

Dan Byrd | ITSI Specialist, Splunk

David Millis | ITOA Architect, Splunk

Safe Harbor Statement

During the course of this presentation, we may make forward-looking statements regarding future events or the expected performance of the company. We caution you that such statements reflect our current expectations and estimates based on factors currently known to us and that actual events or results could differ materially. For important factors that may cause actual results to differ from those contained in our forward-looking statements, please review our filings with the SEC.

The forward-looking statements made in this presentation are being made as of the time and date of its live presentation. If reviewed after its live presentation, this presentation may not contain current or accurate information. We do not assume any obligation to update any forward looking statements we may make. In addition, any information about our roadmap outlines our general product direction and is subject to change at any time without notice. It is for informational purposes only and shall not be incorporated into any contract or other commitment. Splunk undertakes no obligation either to develop the features or functionality described or to include any such feature or functionality in a future release.

Splunk, Splunk>, Listen to Your Data, The Engine for Machine Data, Splunk Cloud, Splunk Light and SPL are trademarks and registered trademarks of Splunk Inc. in the United States and other countries. All other brand names, product names, or trademarks belong to their respective owners. © 2017 Splunk Inc. All rights reserved.

In This Session

1. Taking a Platform Approach
2. How Splunk Provides Reliability and Performance Insight
3. Splunk and Your APM Tools: Better Together!
4. Adding Service and Root-Cause Insight

Taking a Platform Approach

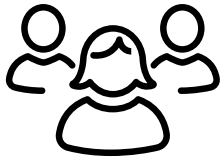
It's your data, make the most of it.

Application Management: Many Roles, Many Challenges



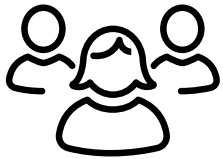
**APP MANAGERS/
OPERATIONS**

- ▶ Is the problem with the app, the network or the backend system?
- ▶ Why are my specialists all saying “it works” but the application is down?
- ▶ How does performance compare mobile vs. web vs. desktop?



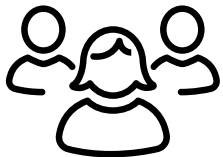
DEVELOPERS

- ▶ How can I deliver new releases faster?
- ▶ How can I see how my applications are working in production?
- ▶ How can other developer, test and monitoring tools improve my coding?



**DEVOPS, SRE
PERF MANAGER**

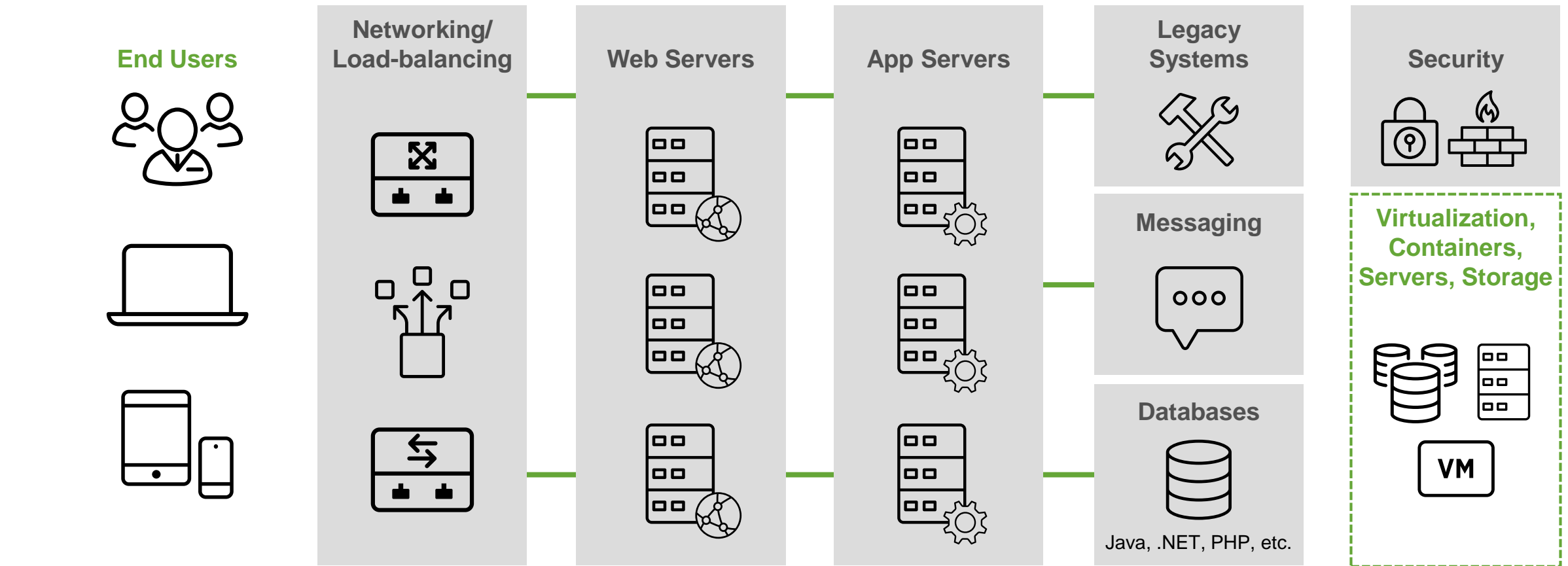
- ▶ How do I ensure new releases don't break critical apps?
- ▶ How can I do “full stack” monitoring easily?
- ▶ What changes will optimize application and infrastructure performance?



LINE OF BUSINESS

- ▶ How are customers using my app? How is it impacting my business?
- ▶ Which features should I prioritize for future versions?
- ▶ Are my customers impacted by outages and performance issues?

Complex Technology Stacks Make Reliability More Difficult



Complex Technology Stacks Make Reliability More Difficult

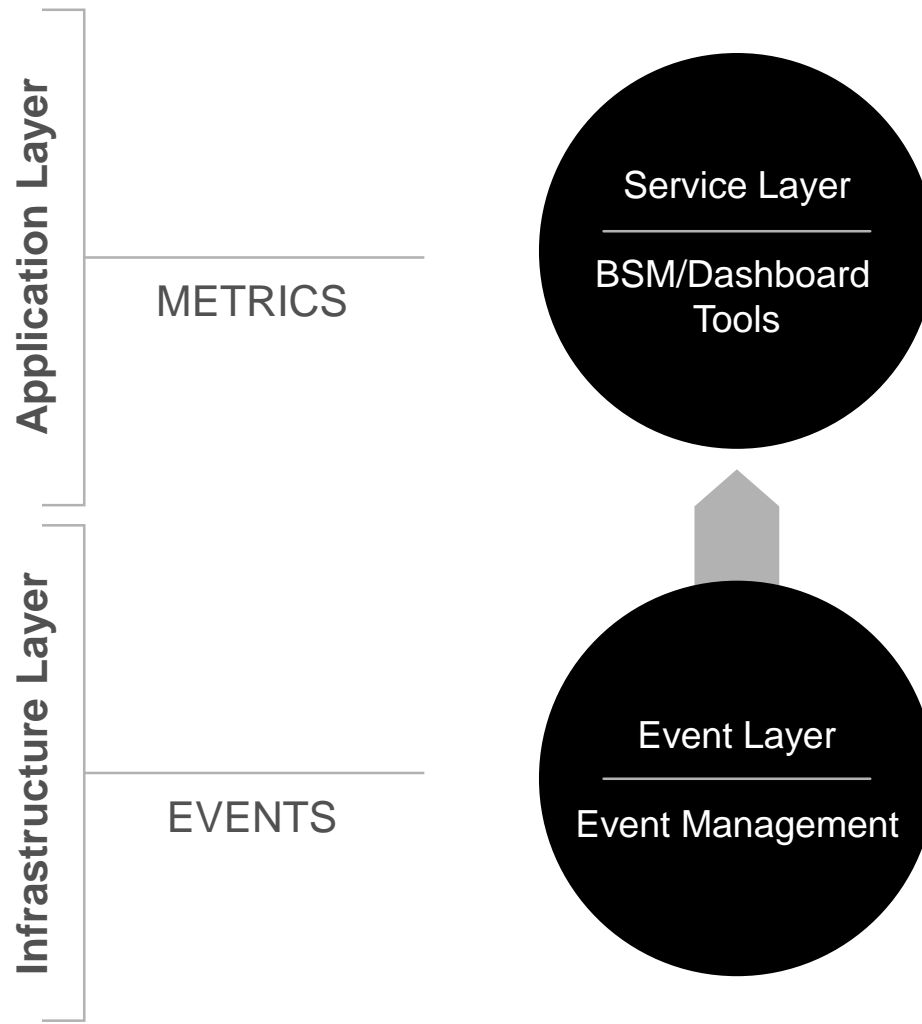
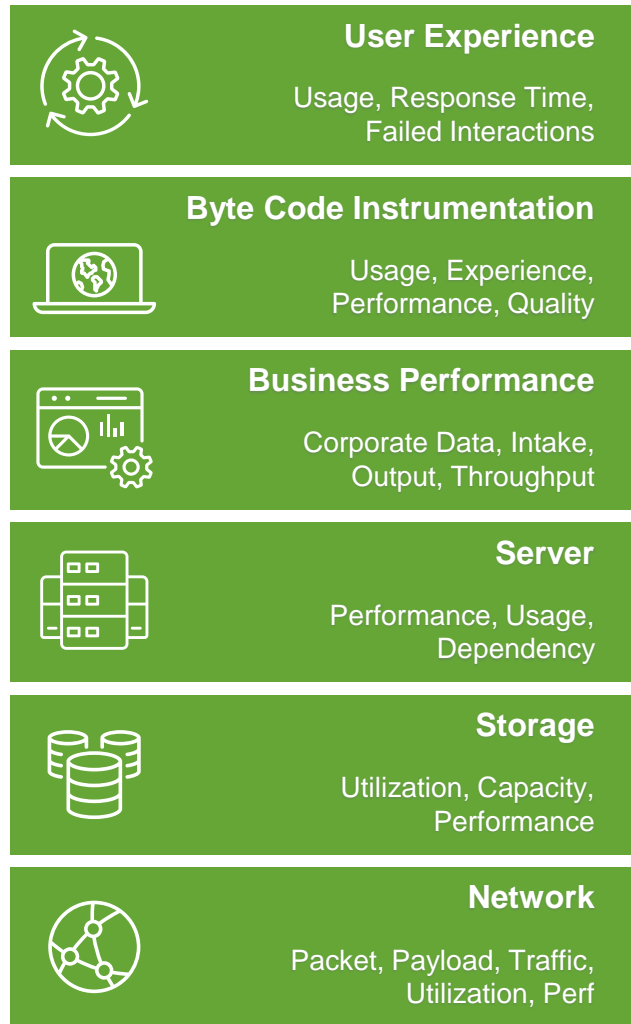
Disconnected and outdated point solutions that limit visibility

Containers and microservices are dynamic and change constantly

Hybrid cloud, multiple providers of services require different approaches

Lack of connection to the business services delivered over the stack

Why The Old Ways Disappoint

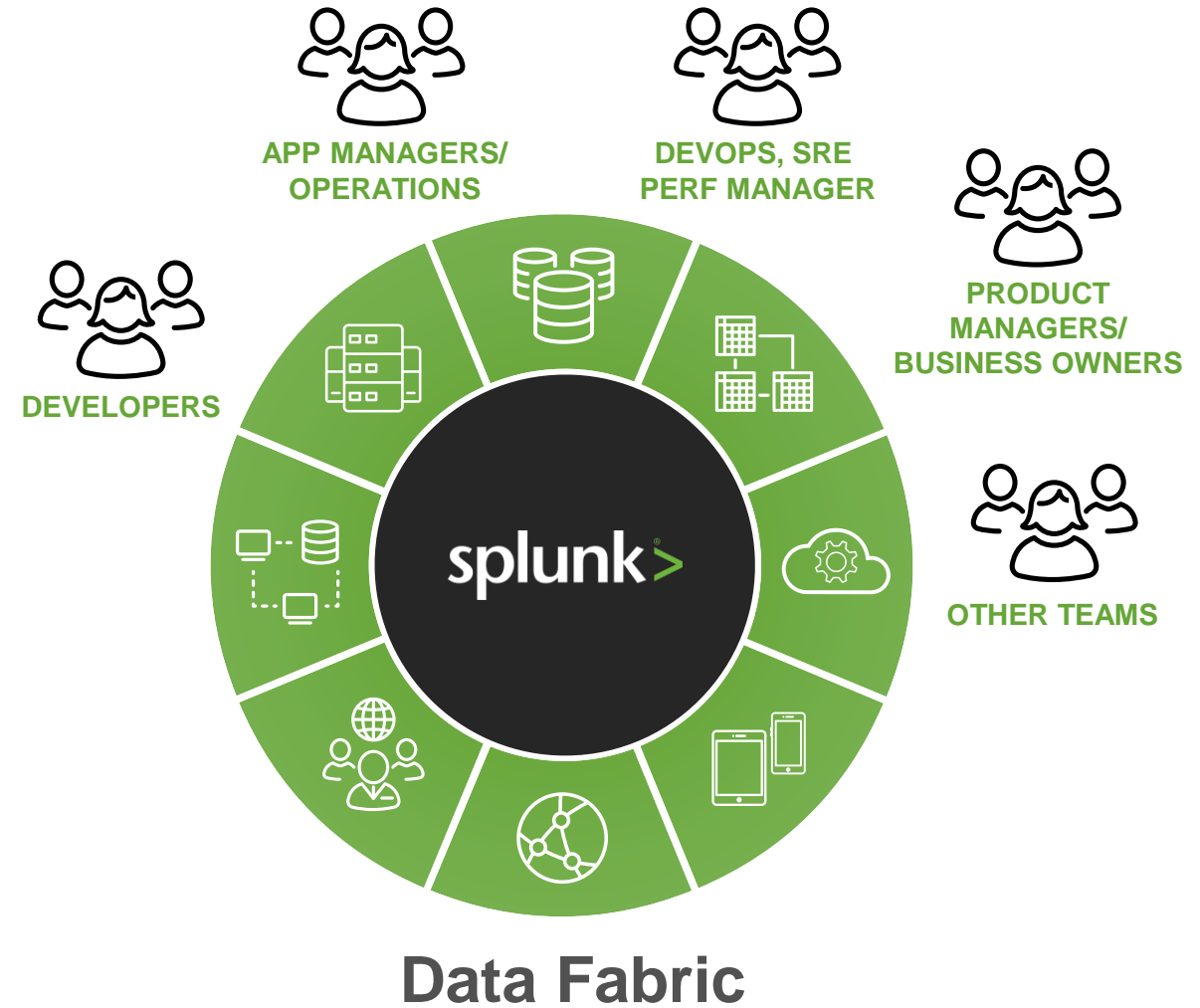


Challenges

- ▶ Many disparate components
- ▶ Brittle integrations
- ▶ Data is summarized and lost
- ▶ Longer root-cause identification
- ▶ End-to-end view challenging
- ▶ Labor-intensive to manage
- ▶ Not agile enough for digital business

Reliability Requires a Platform Approach

- ▶ Ingest data once – single source of truth across teams
- ▶ Analyze machine data across entire stack
- ▶ Integrate data from other management tools
- ▶ Connect machine data to business services
- ▶ Identify root cause of problems quickly
- ▶ Apply best practices in analytics to predict changes in reliability and service usage



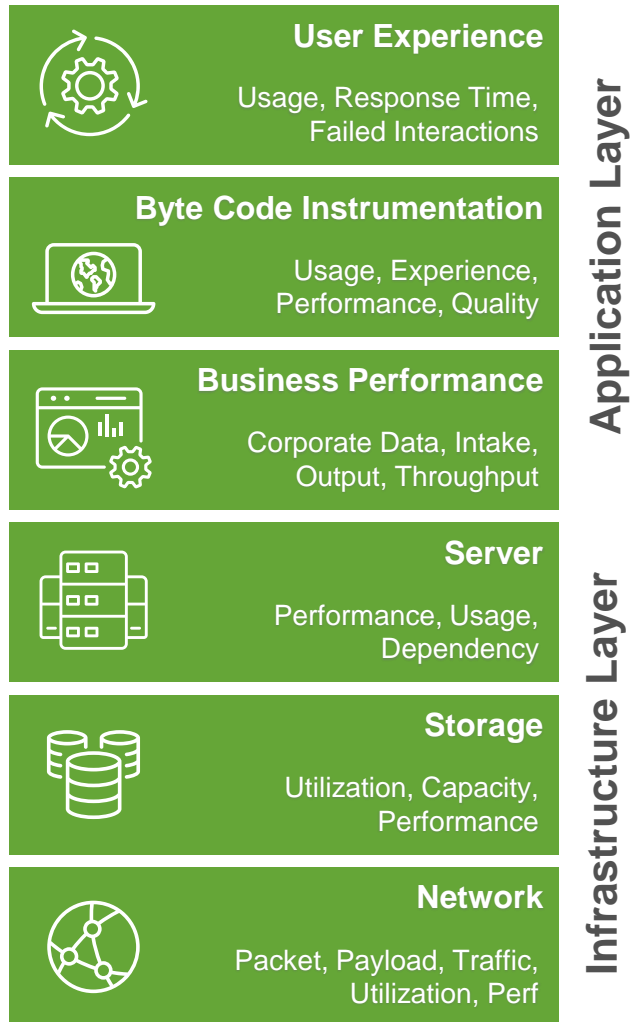
How Splunk Provides Reliability and Performance Insight

Application Performance Insight.

Better, more efficient monitoring. Faster troubleshooting.

Insight across teams. Everyone wins.

A Platform Approach for Application Performance Analytics



Application Layer

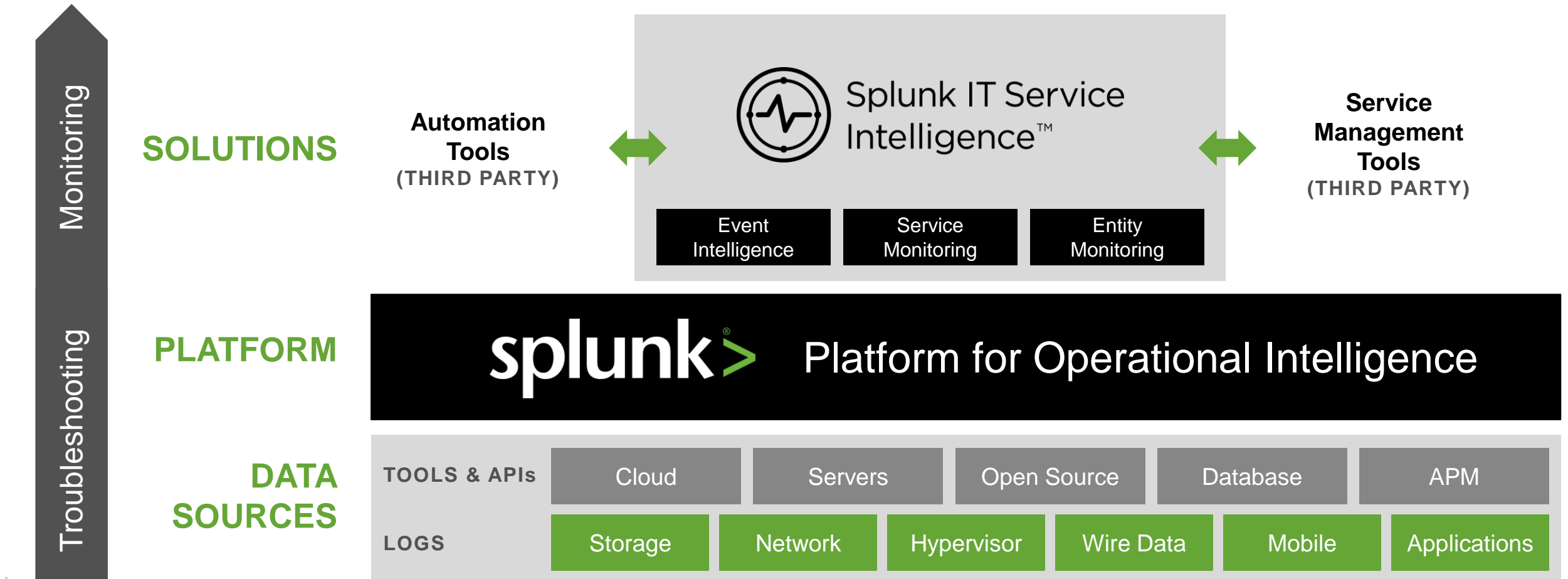
Infrastructure Layer

MACHINE
DATA

Splunk Approach:

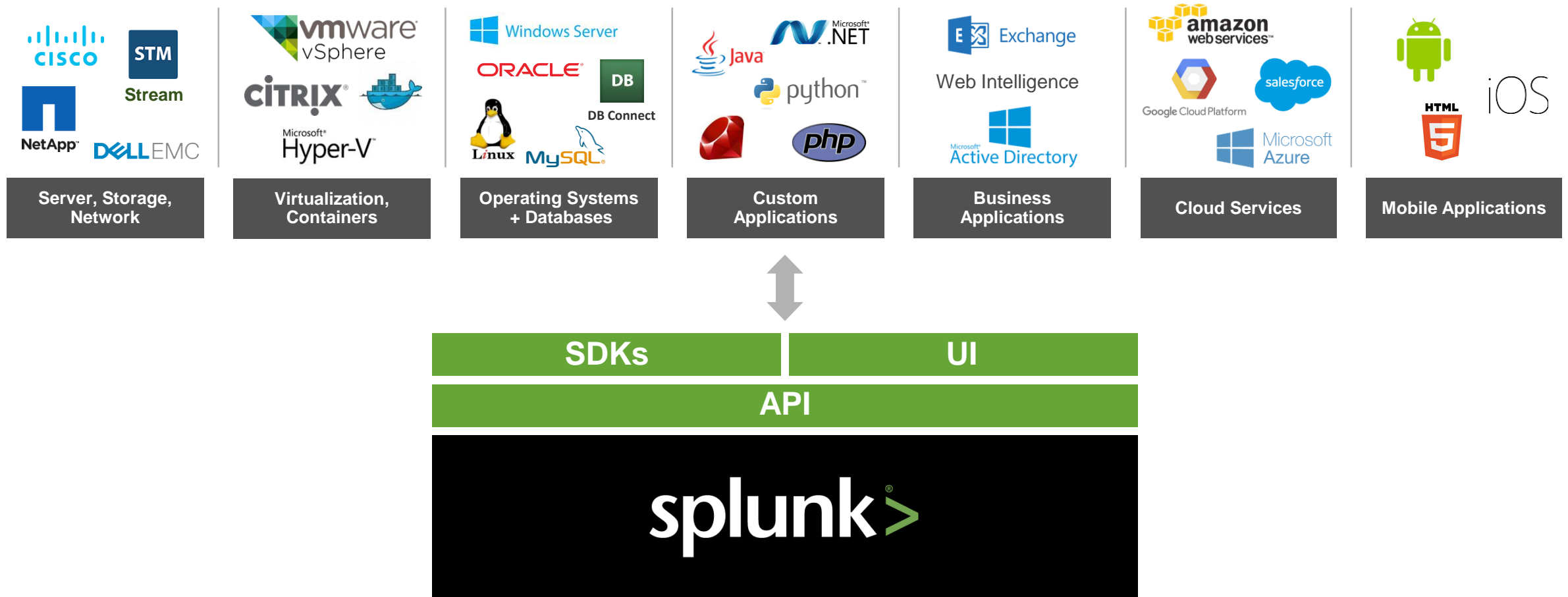
- ▶ Single repository for ALL data
- ▶ Data in original raw format
- ▶ Machine learning
- ▶ Simplified architecture
- ▶ Fewer resources to manage
- ▶ Collaborative approach

Solution Architecture



Index and Analyze Data Across Your Technology Stack

Splunk Add-Ons, Templates and Apps Accelerate Value From Machine Data

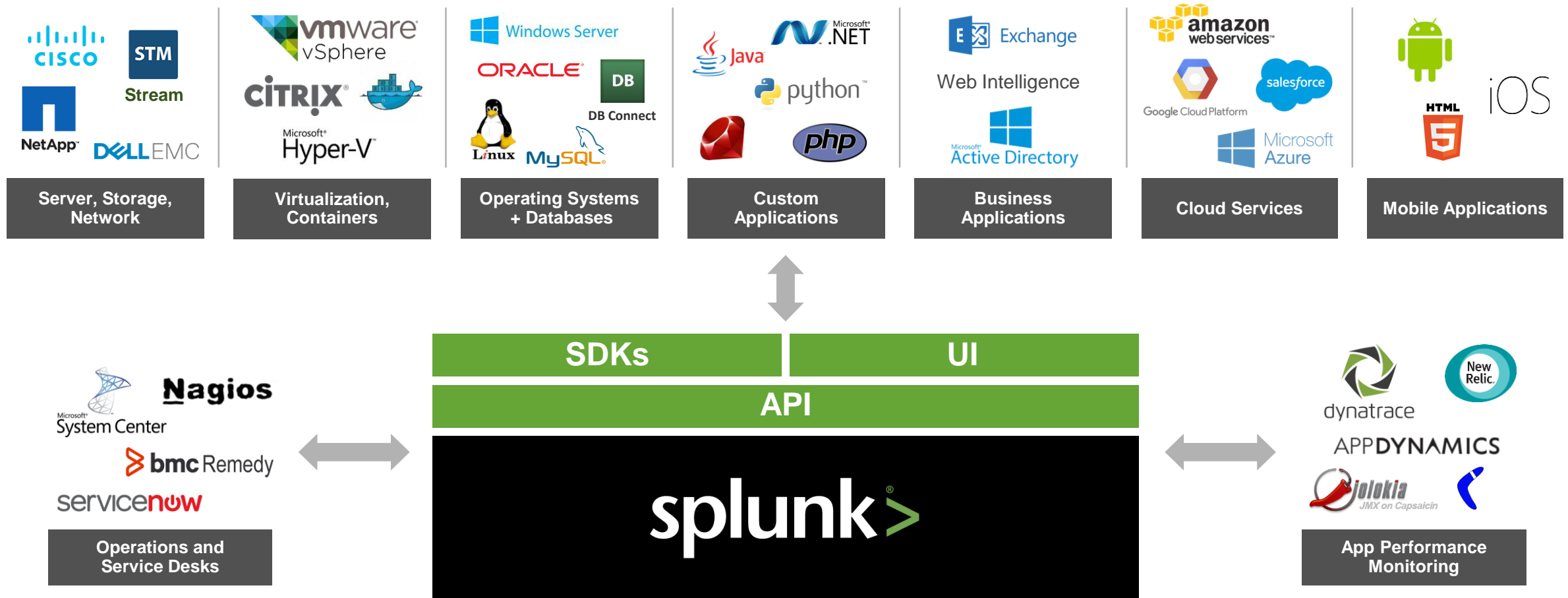


No rigid schemas – add in data from any other source.

splunk>live!

Index and Analyze Data Across Your Technology Stack

Splunk Add-Ons, APIs and Apps Integrate With Other Tools You Already Have



No rigid schemas – add in data from any other source.

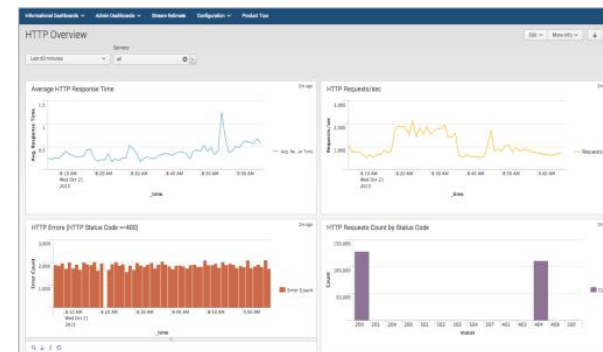
splunk>live!

Gaining Transaction Insight From Your Network

Splunk Stream

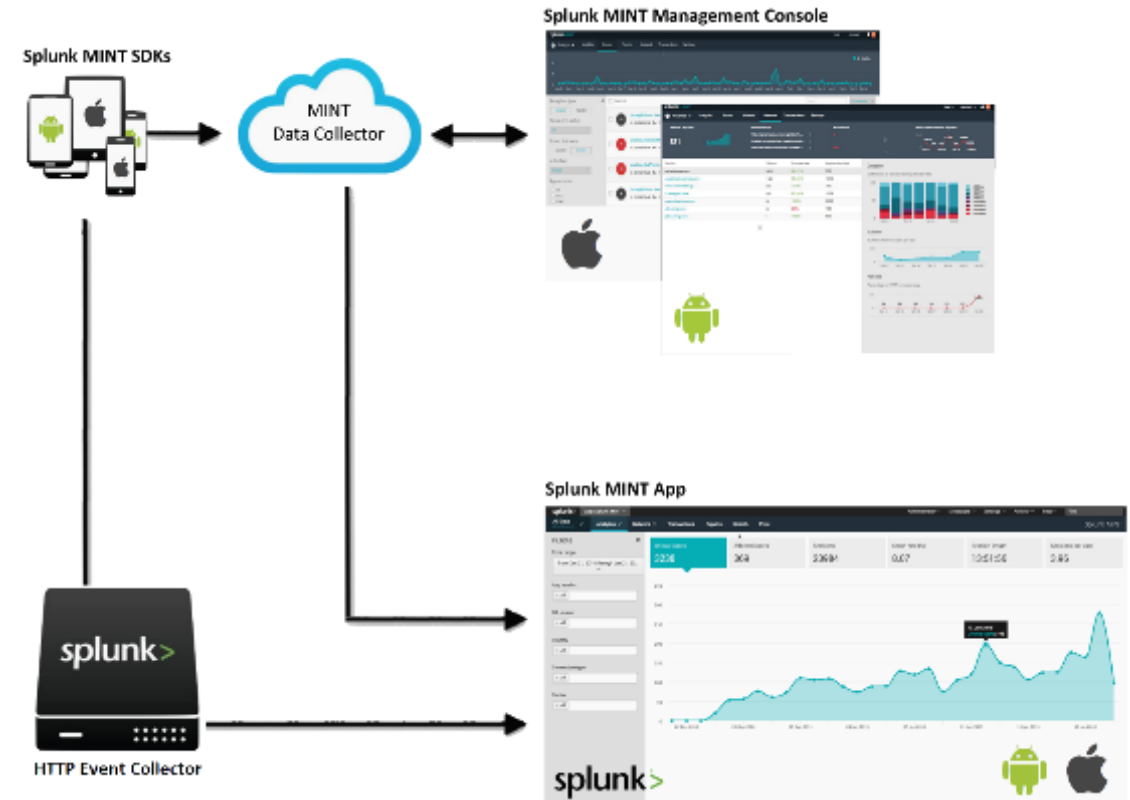
- ▶ Gain real-time insight into application performance and customer experience
- ▶ Attain visibility into cloud services
- ▶ Deliver immediate insights from streaming network
- ▶ Network-based packet capture does not require DBA or other admin tools and doesn't affect performance

Performance Metrics	Application Data	Business Data
Round Trip Time	POST Content	Product ID
Client Request Time	AJAX Data	Customer ID
Server Reply Time	Section	Shopping Cart ID
Server Send Time	Sub-Section	Cart Items
Total Time Taken	Page Title	Cart Values
Base HTML Load Time	Session Cookie	Discounts
Page Content Load Time	Proxied IP Address	Order ID
Total Page Load Time	Error Message	Abandoned?



Gaining Insight on Your Mobile Apps

- ▶ Immediate visibility to mobile app crashes
- ▶ Insight into mobile app use – MAU/DAU, device usage, network insight
- ▶ Transaction performance insights
- ▶ Correlate mobile with other data types for complete insight



Gaining Insight on Your AWS Hosted Apps

- ▶ Accelerate your AWS deployment through better visibility into usage and user behavior
- ▶ Gain increased visibility into AWS resource utilization
- ▶ Supports wide range of AWS data sources

AWS CloudTrail

AWS CloudWatch

AWS ELB Logs

AWS Config

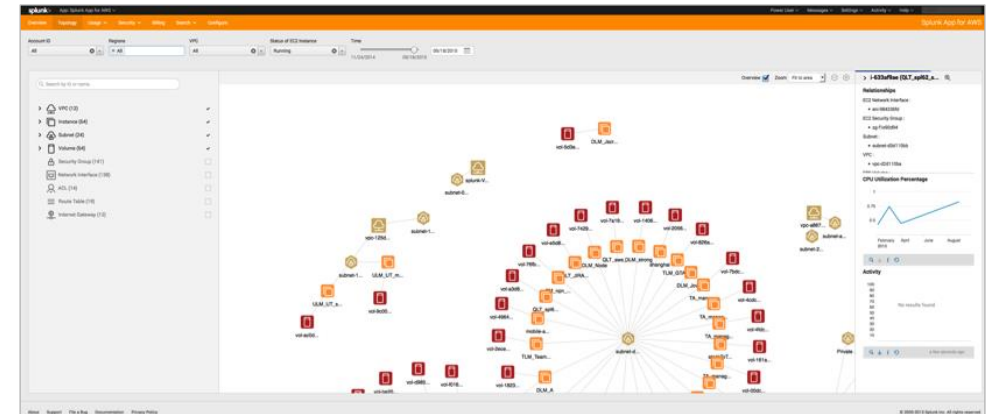
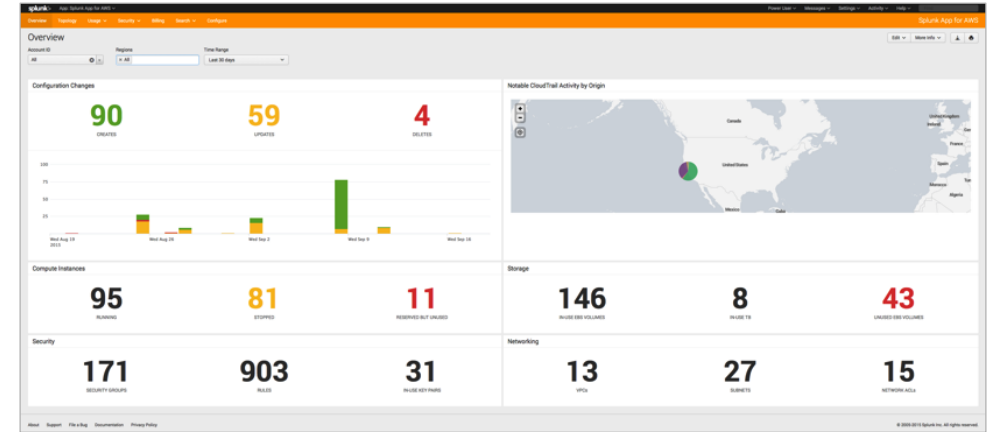
AWS VPC Flow Logs

AWS S3 Access Logs

AWS Billing

AWS CloudFront

Other





Faster Development, Better Troubleshooting

- ▶ Accelerated code delivery from 3 months to 20 minutes
- ▶ Reduced infrastructure and hardware costs by migrating to the cloud
- ▶ Gained visibility and able to perform analysis from metrics:
 - What users were doing, how long was it taking
- ▶ Eliminated other tools

130.60.4 - - [07/Jan 18:10:57:153] "GET /category.screen?category_id=GIFTS&JSESSIONID=5D1SLAFF10ADFF10 HTTP 1.1" 404 720 "http://buttercup-shopping.com/cart.do?action=view&itemId=EST-6&product_id=FI-SW-01" "Opera/9.20 (Win
128.241.220.82 - - [07/Jan 18:10:57:123] "GET /product.screen?product_id=FL-DSH-01&JSESSIONID=5D5SL7FF6ADFF9 HTTP 1.1" 404 3322 "http://buttercup-shopping.com/category.screen?category_id=GIFTS" "Mozilla/4.0 (Compaq i486 Win
ows NT 5.1; SV1; - - [07/Jan 18:10:56:156] "GET /oldlink?item_id=EST-26&JSESSIONID=5D5SL9FF1ADFF3 HTTP 1.1" 200 1318 "http://buttercup-shopping.com/cart.do?action=purchase&itemId=EST-16&product_id=RP-LI-02" "Net111A
item_id=EST-16&product_id=RP-LI-02" 468 125.17 14.00 screen?category_id=FLOWERS&JSESSIONID=5D1SL8FF1ADFF9 HTTP 1.1" 200 3885 "http://buttercup-shopping.com/category.screen?category_id=FLOWERS" "Opera/9.20 (Win
buttercup-shopping.com/cart.do?action=purchase&itemId=EST-16&product_id=RP-LI-02" 468 125.17 14.00 screen?category_id=FLOWERS&JSESSIONID=5D1SL8FF1ADFF9 HTTP 1.1" 200 3885 "http://buttercup-shopping.com/category.screen?category_id=FLOWERS" "Opera/9.20 (Win
buttercup-shopping.com/cart.do?action=purchase&itemId=EST-16&product_id=RP-LI-02" 468 125.17 14.00 screen?category_id=FLOWERS&JSESSIONID=5D1SL8FF1ADFF9 HTTP 1.1" 200 3885 "http://buttercup-shopping.com/category.screen?category_id=FLOWERS" "Opera/9.20 (Win

Splunk Demo

Splunk and APM – Better Together!

More insight, less “chair swivel”

splunk>live!

APM Tools – Valuable, But Not Enough

Traditional APM tools excel at...

- ▶ End user response time
(and alerting when performance is slow)
- ▶ Byte code instrumentation
(detecting what code causes bottlenecks)
- ▶ App server metrics
- ▶ Application mapping and transaction profiling
- ▶ Deploying quickly for base-level use cases

... but have critical limitations

- ▶ “Full stack” monitoring
(including networks, load balancers, etc.)
- ▶ Finding the root cause
(that’s usually found in logs)
- ▶ Reactive (not predictive)
- ▶ Usually don’t store raw data indefinitely
- ▶ Advanced analytics
(prediction, anomalies, ML, etc.)
- ▶ Data access for multiple stakeholders
(LOBs, security, etc.)

Application Performance Analytics

Splunk captures all data in its native format for multiple use cases

Without Splunk

APM tools can span some (but not all) sources, but only for the application(s) that are instrumented for APM

Applications A & B

NOTE: This is a REACTIVE approach, as the issue has already occurred!

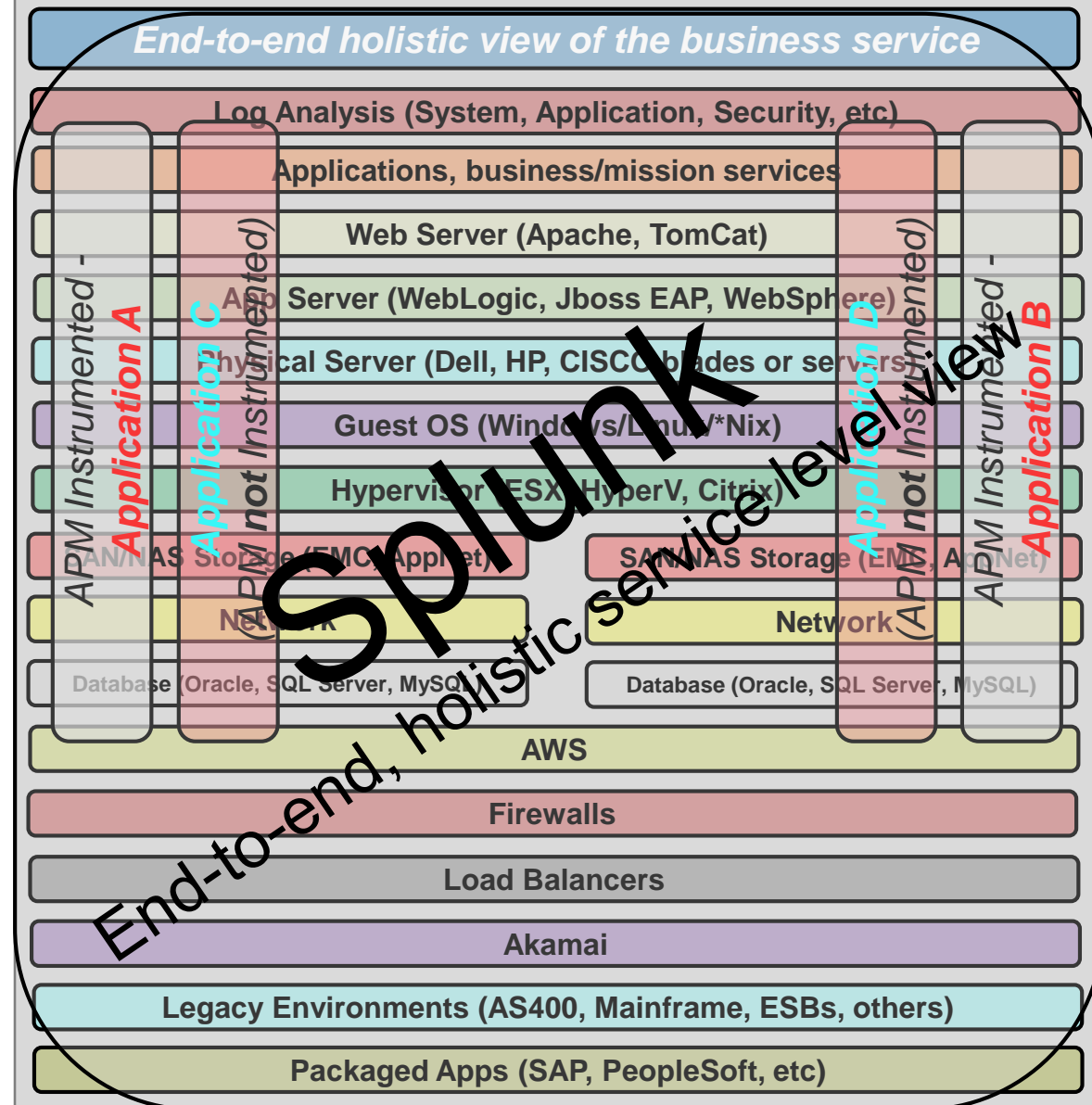
Not all Applications are instrumented

Applications C & D

With Splunk

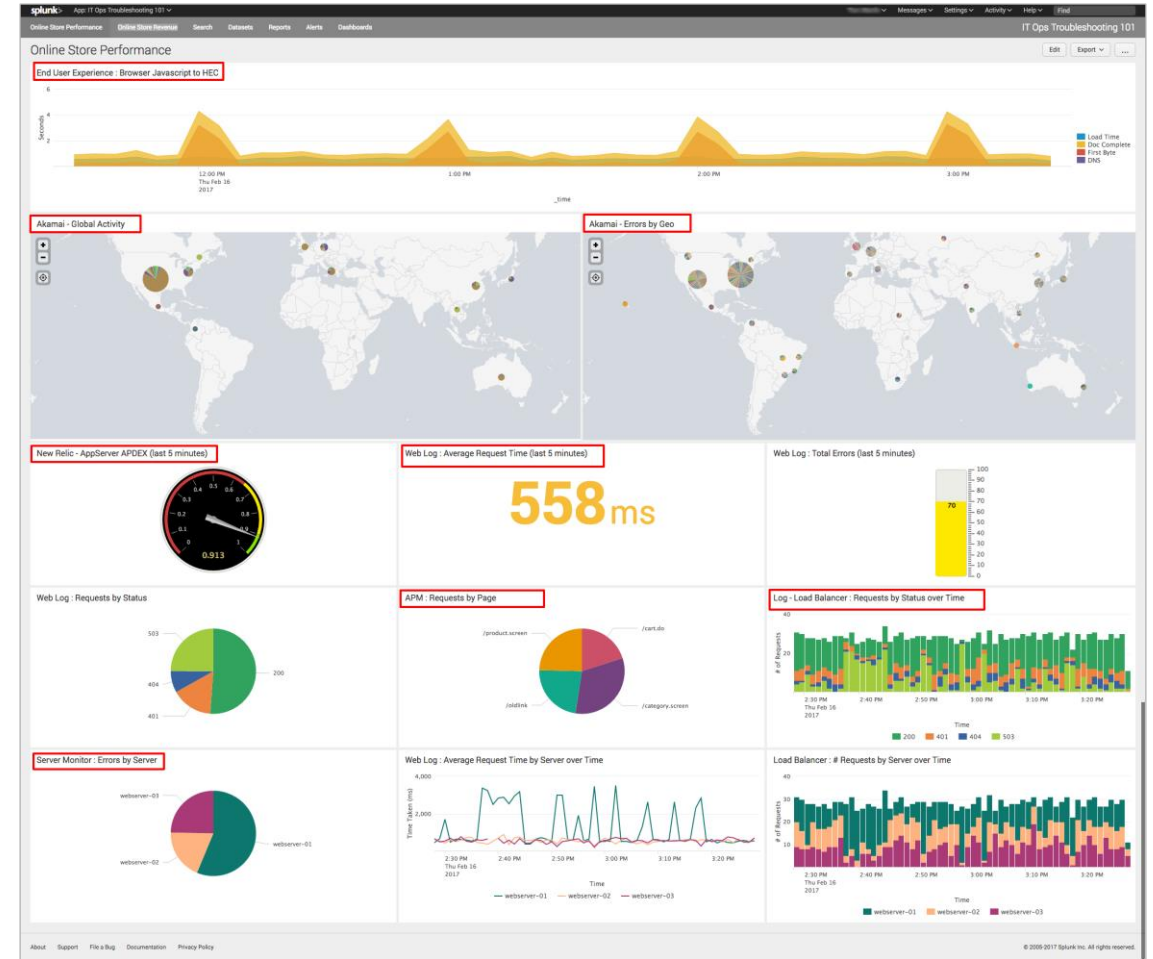
- ✓ **end-to-end, holistic visibility to the complete service**
- ✓ **across ALL data sources and applications**
- ✓ **can provide PREDICTIVE analysis, before an issue occurs**

Splunk Data Fabric



APM as a Data Source for Splunk

- ▶ Pull data from APM tools and provide events to APM tools
- ▶ Gain insight into EUM, application requests, app errors and correlate with logs all in one platform
- ▶ Reduce the “clicks” between spotting problems and finding root cause
- ▶ Forecast, predict and detect anomalies in APM data
- ▶ Integrate triage with non-application layers of the stack



Splunk Apps for APM

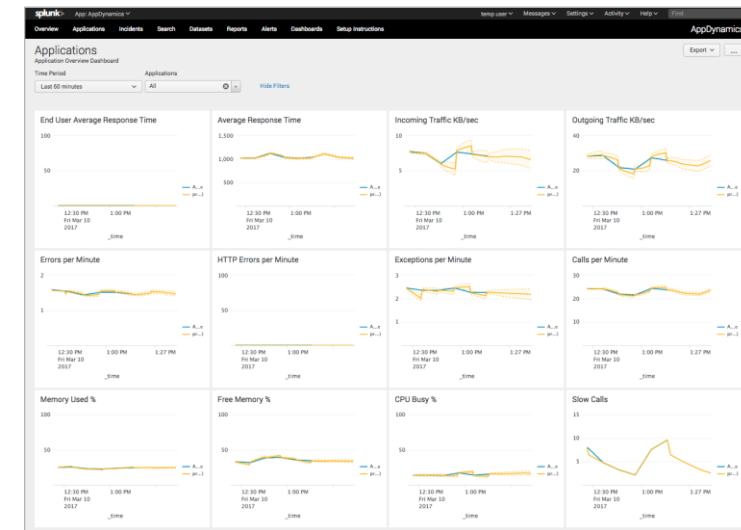
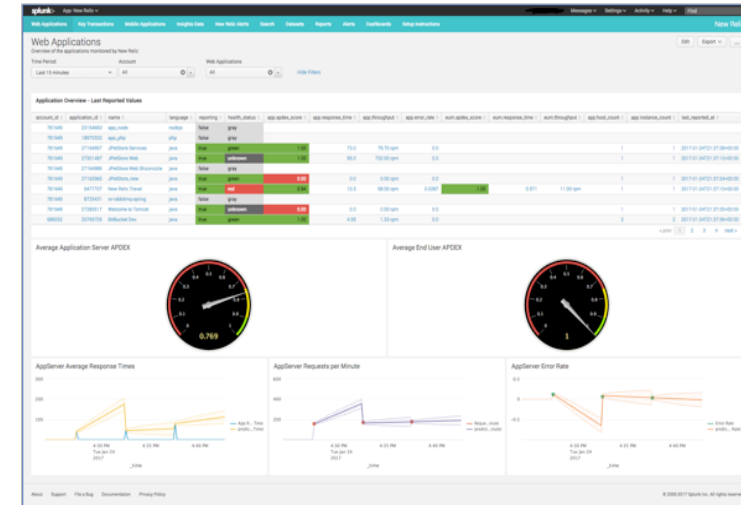
APM Tools

- ▶ Splunk add-on and app for New Relic
- ▶ Splunk add-on and app for AppDynamics
- ▶ Dynatrace app (provided by Dynatrace)

Other Notable APM Apps

- ▶ Web Performance (based on boomerang.js)
- ▶ Splunk Mobile Intelligence (Splunk MINT)
- ▶ Splunk Stream

splunkbase.splunk.com



Dynatrace + Splunk at CSAA



- ▶ Insight on HTTP 500 Errors
- ▶ Dashboards, reports, alerts, searches
 - Web, app server logs
 - Server/infrastructure logs
- ▶ Method level execution times
- ▶ User Experience Management
- ▶ Database response times
- ▶ JVM heap stats

CSAA integrated Dynatrace data into Splunk and saw...

- ▶ Correlated metrics with HTTP 500 errors: What happened and why
- ▶ Anyone with Splunk access can see app performance data
- ▶ New reports types generated with no manual modification

Splunk Demo

Adding Service and Root-Cause Insight

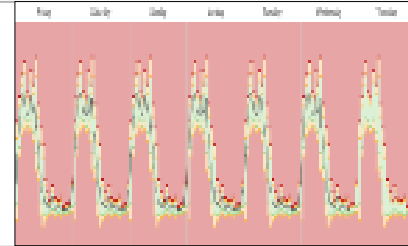
Your stakeholders only see the service, you should too.

Splunk IT Service Intelligence

Splunk ITSI Capabilities

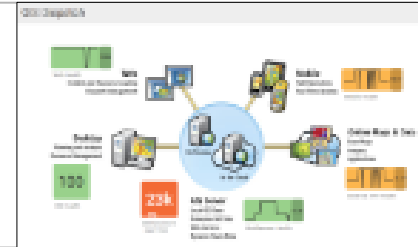
Machine Learning

- ▶ Adaptive threshold automation to minimize false alerts
- ▶ Behavior anomaly alerts to proactively address issues
- ▶ Automatic correlation of data into intelligence, mitigating SME dependency



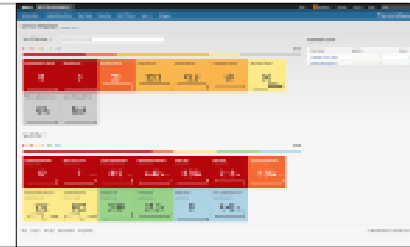
Dynamic Service Model

- ▶ Visualize entire tech stack – bare metal through business layer
- ▶ View the entire ecosystem with customized views for execs
- ▶ Apply context to events to prioritize investigation based on impact



Search-Based KPIs

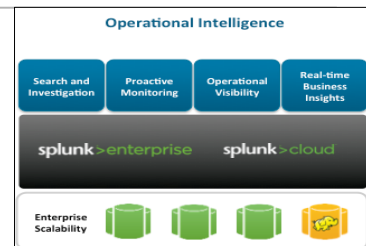
- ▶ Accelerators minimize SPL coding
- ▶ Trend aggregation to enable rapid visualization
- ▶ Multi KPI Alerts for proactive irregularity identification



splunk>

Platform for Operational Intelligence

- ▶ Time Series Index
- ▶ Schema on Read
- ▶ Handle any and all data



splunk>live!



Real-Time Car Auctions Delivered With Intelligence

“With Splunk ITSI, we have proactive infrastructure monitoring to ensure a consistent level of customer service for interested buyers to bid on cars.”

— *Ken Gavranovic, VP Technology Application Development & Operations, Cox Automotive*

- ▶ Reduced time-to-investigate and resolution with real-time insights
- ▶ Reduced incidents across global auctions by 90%
- ▶ Improved end-user experience and service reliability
- ▶ Scaling the implementation with Splunk Cloud

Splunk Demo

Splunk: Application Performance Analytics

Platform approach that spans technology and team silos

Manage to KPIs, SLOs – isolate root cause and service impact

Analytics for hybrid and cloud environments + microservices stacks

Full stack monitoring that integrates your APM tool's data

Easy to Try & Get Started

1

FREE ONLINE TRIAL

2

FREE DOWNLOAD

3

FREE AMAZON
MACHINE IMAGES (AMI)

splunk®

Workshops: Get Splunk Hands-on Experience

Attend a Splunk Workshop

splunk.com/workshops

June 14: Minneapolis

► **Venue:** Hyatt Regency
Minneapolis

► **Time:** 8:30am

► Register Soon!

- splunk.com/workshops

**SIGN UP
TODAY!**

Event Locations

City	Date	Location	Registration
Kansas City, MO	April 11, 2017	The Westin Kansas City at Crown Center	Register now
St. Louis, MO	April 13, 2017	Sheraton Westport Plaza Hotel	Register now
San Diego, CA	April 18, 2017	Hyatt Regency La Jolla at Aventine	Register now
Atlanta, GA	April 19, 2017	Cobb Galleria Centre	Register now
Baltimore, MD	May 2, 2017	Hilton Baltimore	Register now



.conf2017

.conf2017

The 8th Annual Splunk Conference

SEPT 25-28, 2017

Walter E. Washington Convention Center
Washington, D.C.

SAVE OVER \$450

You will receive an email after registration opens with a link to save over \$450 on the full conference rate.

You'll have 30 days to take advantage of this special promotional rate!

conf.splunk.com

splunk > live!

A stylized, symmetrical face with a wide, toothy grin, large eyes, and a central vertical line, resembling a mask or a stylized animal head. The face is composed of thick black outlines on a white background. It has a large, open mouth showing two rows of teeth. The eyes are large and almond-shaped, with a small black dot in the center of each. A thick vertical line runs down the center of the face, separating the two sides. The top of the head is rounded with small, pointed ears on either side. The overall style is simple and graphic.



Complete the survey for
your chance to win a
.conf2017 pass

splunk>live!

Thank You

Dan Byrd | dbyrd@splunk.com

David Millis | dmillis@splunk.com