

# Sage 500 ERP

## Shipping

### Count on Sage 500 ERP Shipping by SmartLinc

Reduce costs while processing shipments accurately and on time, every time—Sage 500 ERP (formerly Sage ERP MAS 500) Shipping provides a flexible solution that can help you streamline shipping activities for all Parcel Carriers, Less than Truckload (LTL) shipments, Truck Load, and Company Vehicles for carriers in the USA and Canada.

#### Your Challenge

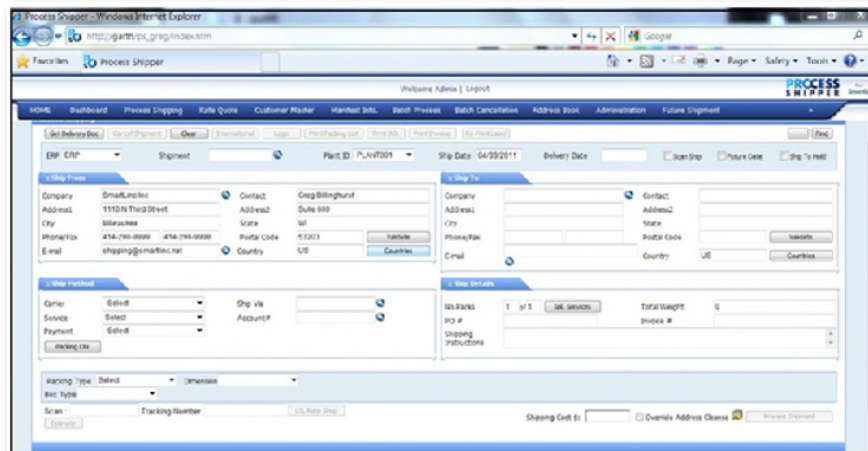
One of the more daunting challenges faced by companies across industries is to efficiently manage costs while still exceeding the high expectations of customers. Significant delivery disruptions have the potential to impact customer satisfaction and raise your shipping costs. You need to ensure all orders are fulfilled accurately and arrive to your customers on time, for the lowest possible price.

#### Your Solution

Shipping helps you get your products into your customers' hands quickly and economically by facilitating all forms of shipping, including Small Parcel Shipping, LTL, full Truck Loads, Company Vehicle, or a combination of them all, utilizing any carrier. By seamlessly connecting to the technology provided by carriers (web services, HTTP Post, tracking/pro number algorithms, or pregenerated tracking numbers, and so on), Shipping allows you to easily select the best way to ship and reduces freight costs. Not only do you realize lower freight and labor costs, with Shipping you get a cost-effective solution that is updated automatically and works with your current process and hardware—no specific printers or scales required. Take advantage of full visibility across all your locations into your shipping process through a single web-based platform for Shipment Creation/Cancelation, Address Validation across the USA and Canada, Multi-Carrier Rate Shopping, Carrier Label Printing, Tracking, and Proof of Delivery all within Sage 500 ERP.

#### The Bottom Line

With Shipping, you get a web-based, flexible and comprehensive shipping solution without breaking your budget, straining your internal resources, or compromising on functionality. With the peace of mind of shipping compliance—and the cost benefits of dramatically streamlined processes—you have one less risk to worry about in your order management.



### BENEFITS

- Automated Efficiency**  
Streamline processes, saving time, eliminating errors, and facilitating smooth, cost-efficient operations, which keep both management and customers happy.
- Maximum Flexibility**  
Multimode and multicarrier support for Canadian and US carriers, as well as various configuration options, ensure you deliver on time, every time at the lowest possible price.
- Comprehensive Visibility and Reporting**  
Get the insight you need to more effectively manage the entire shipping process, including carrier performance, tracking, and proof of delivery.
- Seamless Connectivity**  
Web-based connection provides real-time shipping, carrier, and Sage 500 ERP updates to eliminate redundant data entry and automate your workflow.
- Secure Business Integrity**  
Protect your most valuable asset—your data—the tight security of Sage 500 ERP ensures that your vital customer information is protected.

Save time and cut costs by introducing best practices that streamline the entire shipping process, allowing you to always ship the best and most economical way based on the shipments required arrival date, days in transit, and service level.



## Small Investment. Big Return. Peace of Mind.

Discover the Sage 500 ERP technology difference! Get one unified solution on which to build your business—enabling more efficient processing, more productive people, and the ability to gain real insight into your business. Sage 500 ERP ensures your business is built on a solid foundation, providing superior architecture that gives you the power you need today with the flexibility to adapt tomorrow. Reap the rewards of a global reaching solution with the breadth of functionality to support multientity and multinational organizations, as well as the local touch needed for your business. Your newfound freedom of choice is supported by a collaborative ecosystem ensuring success for the life of your business. And of course, with over 30 years of supporting businesses just like yours, Sage technology is proven, reliable, and experienced.

## Features

### Automated Efficiency

Sage 500 ERP Shipping provides a comprehensive automation platform to introduce best practices that improve the efficiency and accuracy of your entire shipping process. Automated functionality allows you to always ship the best and most economical way based on the arrival date, days in transit, and service level required for the shipment. Reduce freight costs through carrier-compliant interfaces providing real-time rate shopping, insurance management, and multiple shipping options, such as delivery, shipment, and freight consolidations. You can control the level of automation in your warehouse by taking advantage of integrated scales and scanners to save the warehouse time as well as reduce errors. Each order is manifested with the carrier as the label is produced, so the driver already knows how many packages to pick up and an end-of-day manifest is not required. And best yet, your customers are provided with automatic email notification of the date of shipment, packing slip, and a link to the carrier's tracking number.

### Maximum Flexibility

Multi-Carrier and Multi-Mode Shipping flexibility ensures that you are maximizing freight cost savings and shipping efficiency. Shipping by SmartLinc is carrier compliant with FedEx, UPS®, USPS, DHL, CanPar, Candian Post, and Purolator, and it supports generic and regional carriers to optimize transportation through Small Parcel, LTL, TL, and Air modes. Support an unlimited number of company vehicles to track your personal delivery methods. Through one point of contact, you can select from a broad range of carriers and modes, based on your customers' delivery requirements, time sensitivity, and the characteristics of the products' being shipped. Carrier-specific shipping labels, tags, and reports can be easily generated in various formats, including high-quality thermal labels. The packing application lets you scan and enter items as they are packed, automating the packing process so your warehouse maintains 100% shipping accuracy. Ensure your shipments are delivered on time, every time.

### Seamless Connectivity

Shipping is a web-based connected service that can be deployed at a single location or multiple locations throughout your company. Designed to work with your existing business processes and provide seamless integration to Sage 500 ERP—our shipping solution allows real-time updates of charges and tracking numbers to your system. In addition, a real-time connection to carriers allows for carrier compliancy to be handled in the business logic on the carrier systems and passed through the web services to eliminate the need to repetitively install rate changes.

### Comprehensive Visibility and Reporting

Improve inefficiencies as well as negotiate better rates with clear insight into shipping metrics, such as shipping details, costs, carrier delivery performance, and shipment disruption information. Easily manage international shipments by generating a Certificate of Origin, Commercial Invoice, and NAFTA forms. Safe, secure, and controlled! Comprehensive reporting provides greater control and visibility into your global logistics operations.

### Secure Business Integrity

Protect the sensitive information in your business. Sage 500 ERP software assures comprehensive security at variable levels, protecting your highly sensitive customer data from unauthorized access or manipulation. Your data is further protected through your internal IT controls, such as firewalls and OS security.