

# Sage ERP Warehouse Management

by Accellos

## Empowering the Warehouse

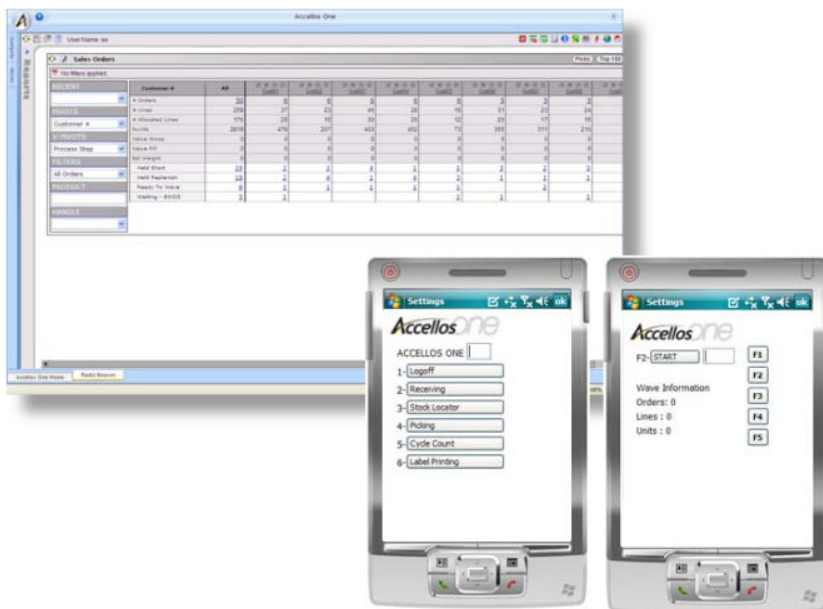
A recent Aberdeen Research study shows that improving the speed and accuracy of the fulfillment process and reducing the cost of labor are the key issues that businesses like yours face in the warehouse.

To gain control over these issues requires technology that optimizes the utilization of your people and your assets. More than an automated data collection system that simply extends the paper processes leveraged from within your ERP solution.

With the economic conditions that we face, you have to be looking for the system to do more so that you can leverage your workforce more effectively. So that you can maximize service levels while minimizing inventory. Find ways to optimize your transportation costs in this time of rising fuel costs and driver scarcity.

And, accomplish this while not increasing your IT infrastructure!

Accellos can help. We've built our Fulfill Edition to empower you to automate your warehouse using tools like conveyers, carousels, sophisticated picking algorithms, advance replenishment methods and order allocation. Delivered in a simple, intuitive solution that can be implemented quickly and efficiently.



### BENEFITS

#### Tighten Control

Sage ERP Warehouse Management by Accellos provides you with the tools to maintain better inventory accuracy minimizing writedowns and writeoffs. To insure compliance with your customers labeling requirements. Improve your control in these and many more key areas of your business.

#### Maximize Efficiency

Leverage our advanced processes to improve your picking and receiving functions. To eliminate manual order checking. These are just a few areas where Warehouse Suite by Accellos helps your team gain efficiency and effectiveness.

#### Improve Visibility

Warehouse Suite by Accellos' web-centric design gives you the ability to allow internal and external users visibility into the status of warehouse operations. Providing visibility creates competitive differentiation for your business that drives ROI.

sage

Endorsed Solution

“Top performers have already built-out their inventory control and order picking processes, and are now turning to innovations in put-away, replenishment, and returns processing to stand-out above the competition.”

Ian Hobkirk,  
Aberdeen Research

Put your warehouse to work for you...

## Features

### Rich Functionality

The Fulfill Edition includes all of the features of the Manage Edition plus:

- Directed put-away
- Advanced allocation
- End of line workflows
- Advance replenishment
- Advanced serials/lots
- Returns

### Broad Extensibility

The Fulfill Edition offers optional modules designed to meet the needs of even the most demanding warehouse:

- Order consolidation
- License plates
- Repackaging
- Advance receiving
- Warehouse automation
- Cartonization

### Seamless Integration

Sage ERP Warehouse Management has been designed using a services-based integration framework that makes it simple to communicate with your:

- Sage 300 ERP system
- UPS/FedEx/DHL/USPS system
- RFID labels and portals