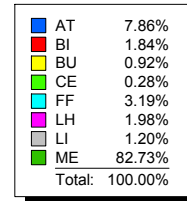
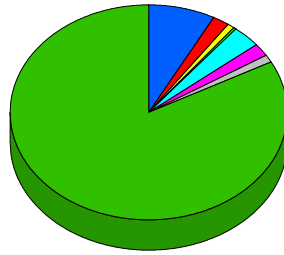


Westfield
ASSETS BY CLASS

Acquisition Value by Class



<u>System No</u>	<u>Class</u>	<u>Description</u>	<u>In Svc Date</u>	<u>Acq Value</u>	<u>Department</u>
Class = AT					
147	AT	Compact Tractor	05/01/07	39,999.00	Agriculture
151	AT	Ford F250 Truck	07/01/07	45,000.00	Agriculture
143	AT	Executive Auto - Hummer H2 (i)	09/02/04	52,241.00	Corporate Office
40	AT	Ford Delivery Van 1 (i)	12/29/01	24,505.00	Facilities
132	AT	Ford Delivery Van 2 (i)	12/21/04	28,950.00	Facilities
175	AT	Ford Escape Hybrid (i)	09/05/08	32,000.00	Retail Operations
Count =	6				
	AT	SubTotal:		\$222,695.00	
Class = BI					
17	BI	Fire Alarm System	11/03/00	6,627.00	Facilities
18	BI	Ventilation System	08/15/00	4,300.00	Facilities
32	BI	Air conditioning	09/06/01	4,699.95	Facilities
34	BI	Recess Lighting	10/11/01	800.00	Facilities
35	BI	Emergency Exit Lighting	11/11/01	400.00	Facilities
36	BI	Emergency Exit Signs	11/11/01	225.00	Facilities
38	BI	Ceramic Tile	12/01/01	12,650.00	Facilities
41	BI	Sprinkler System	01/12/02	3,875.00	Facilities
47	BI	Wallpaper	04/01/02	1,200.00	Facilities
51	BI	Storefront Awning	05/18/02	4,800.00	Facilities
58	BI	Fire Extinguishers	06/30/02	450.00	Facilities
63	BI	Window Writing	08/17/02	275.00	Facilities
83	BI	Loading Dock Equipment	03/18/03	2,525.00	Facilities
118	BI	Fire Extinguishers	08/22/04	450.00	Facilities
133	BI	Fire Protection Equipment	07/05/05	5,444.28	Facilities
161	BI	Built-in Shelving	07/05/07	2,200.00	Facilities
177	BI	Signs	10/15/08	775.00	Facilities
46	BI	Shelving	03/31/02	450.00	Mfg Operations
Count =	18				
	BI	SubTotal:		\$52,146.23	
Class = BU					
4	BU	Thermojaw Bag Heat Sealer (i)	01/28/00	2,075.00	Mfg Operations
6	BU	Donut Cutter	02/12/00	424.00	Mfg Operations
27	BU	Bread Trays	04/13/01	1,795.00	Mfg Operations

<u>System No</u>	<u>Class</u>	<u>Description</u>	<u>In Svc Date</u>	<u>Acq Value</u>	<u>Department</u>
42	BU	Madeline Mold	01/25/02	129.50	Mfg Operations
45	BU	Standard Duty Bakery Racks	03/26/02	1,530.00	Mfg Operations
48	BU	Pastry Cutters, Heart Shaped	05/05/02	88.90	Mfg Operations
49	BU	Pastry Cutters, Round	05/05/02	225.00	Mfg Operations
50	BU	Pastry Cutters, Start Shaped	05/05/02	85.00	Mfg Operations
52	BU	Aluminum Pie Marker	05/30/02	170.00	Mfg Operations
53	BU	Stainless Steel Baking Ring	06/01/02	60.00	Mfg Operations
64	BU	Utility Scale	08/28/02	297.00	Mfg Operations
82	BU	Stainless Steel Measuring Cups	03/15/03	42.50	Mfg Operations
84	BU	Muffin Pans	04/10/03	444.50	Mfg Operations
91	BU	Water Meter	08/02/03	1,600.00	Mfg Operations
93	BU	Cake Air Brush	09/10/03	700.00	Mfg Operations
95	BU	Nylon Pastry Brushes	11/22/03	212.50	Mfg Operations
96	BU	Cheese Cutter	12/01/03	250.00	Mfg Operations
98	BU	Polythylene Ingredient Bins	01/12/04	5,750.00	Mfg Operations
106	BU	Can Dispensing Racks	03/01/04	840.00	Mfg Operations
164	BU	Dough Sheeter	05/10/08	5,592.00	Mfg Operations
166	BU	Bread Knives	05/19/08	48.75	Mfg Operations
209	BU	Bread Trays	04/13/01	1,795.00	Mfg Operations
210	BU	Bread Trays	04/13/01	1,795.00	Mfg Operations

Count = 23

BU SubTotal: \$25,949.65

Class = CE

182	CE	Laptop 1	01/01/04	0.00	
195	CE		01/01/04	0.00	
22	CE	GL Computer Software	02/14/01	4,500.00	Corporate Office
29	CE	Xerox Copier/Fax Machine	06/07/01	993.00	Corporate Office
37	CE	HP LaserJet 1150 (Office)	11/18/01	276.87	Corporate Office
97	CE	Dell Optiplex	12/20/03	2,250.00	Corporate Office

Count = 6

CE SubTotal: \$8,019.87

Class = FF

183	FF		01/01/04	0.00	
187	FF		01/01/04	0.00	
188	FF		01/01/04	600.00	
189	FF		01/01/04	0.00	
190	FF		01/01/04	0.00	
191	FF		01/01/04	0.00	
192	FF		01/01/04	0.00	
193	FF		01/01/04	0.00	
194	FF	Quitting	01/01/04	0.00	
201	FF		01/01/04	0.00	
208	FF		01/01/04	10,000.00	
20	FF	Executive Desk Chair	02/08/01	179.00	Corporate Office
21	FF	Sullivan Office Desk	02/08/01	399.00	Corporate Office
23	FF	Office Bookshelves	02/15/01	1,129.00	Corporate Office
25	FF	Printer Stand	02/28/01	99.00	Corporate Office
119	FF	Fire Safe	08/22/04	325.00	Corporate Office
206	FF	Executive Desk Chair	02/08/01	179.00	Corporate Office
207	FF	Executive Desk Chair	02/08/01	179.00	Corporate Office

<u>System No</u>	<u>Class</u>	<u>Description</u>	<u>In Svc Date</u>	<u>Acq Value</u>	<u>Department</u>
62	FF	Vertical Blinds	08/17/02	540.00	Facilities
78	FF	Restroom Partitions	01/12/03	1,200.00	Facilities
79	FF	Restroom Accessories	01/17/03	3,650.00	Facilities
126	FF	Vertical Blinds	09/23/04	360.00	Facilities
154	FF	Window Treatments	09/23/07	2,760.00	Facilities
158	FF	Bulletin Board	10/02/07	130.00	Facilities
142	FF	Stainless Steel Work Tables - replacements	05/05/00	1,092.00	Mfg Operations
54	FF	Cafe Chairs	06/12/02	4,840.00	Retail Operations
55	FF	Cafe Table Top	06/12/02	2,200.00	Retail Operations
56	FF	Aluminum Display Pans	06/14/02	2,750.88	Retail Operations
57	FF	Glass Door Merchandiser	06/21/02	5,248.00	Retail Operations
59	FF	Stackable Food Bins	07/01/02	606.00	Retail Operations
61	FF	Fire Safe	08/05/02	119.00	Retail Operations
65	FF	Interior Decor	09/10/02	3,500.00	Retail Operations
67	FF	Telephone Equipment	10/01/02	500.00	Retail Operations
92	FF	Stainless Trash Bin - Push Top	08/13/03	1,143.00	Retail Operations
108	FF	Glass Door Merchandiser	03/23/04	2,624.00	Retail Operations
115	FF	Stackable Food Bins	07/13/04	606.00	Retail Operations
116	FF	Cafe Chairs	08/14/04	2,420.00	Retail Operations
117	FF	Cafe Table Top	08/14/04	1,760.00	Retail Operations
122	FF	Telephone Equipment	09/14/04	15,000.00	Retail Operations
129	FF	Interior Decor	09/30/04	1,200.00	Retail Operations
131	FF	Stainless Trash Bin - Push Top	10/15/04	762.00	Retail Operations
157	FF	Interior Decor	09/30/07	250.00	Retail Operations
159	FF	Coffee Station	10/15/07	381.00	Retail Operations
169	FF	20 Cafe Open Square Tabletops	06/01/08	3,999.80	Retail Operations
170	FF	20 Chrome Round Tabletops	06/01/08	5,215.20	Retail Operations
171	FF	80 Boston Bar Stool Chairs	06/01/08	12,400.00	Retail Operations
Count =	46				

FF SubTotal: \$90,345.88

Class = LH

24	LH	Countertops	02/20/01	12,000.00	Facilities
31	LH	Bakery Sign	07/30/01	3,126.00	Facilities
99	LH	Emergency Exit Lighting	02/10/04	275.00	Facilities
100	LH	Emergency Exit Signs	02/10/04	135.00	Facilities
102	LH	Air conditioning	02/12/04	3,000.00	Facilities
103	LH	Vinyl Flooring	02/18/04	3,800.00	Facilities
104	LH	Sprinkler System	02/19/04	2,940.00	Facilities
107	LH	Renovate Restroom	03/10/04	6,200.00	Facilities
111	LH	Bakery Sign	07/01/04	2,700.00	Facilities
112	LH	Storefront Awning	07/01/04	4,800.00	Facilities
114	LH	Decorative Light Fixtures	07/05/04	1,755.43	Facilities
130	LH	Window Writing	10/02/04	275.00	Facilities
101	LH	Recess Lighting	02/10/04	535.00	Retail Operations
173	LH	Countertops	08/01/08	14,500.00	Retail Operations
Count =	14				

LH SubTotal: \$56,041.43

Class = LI

3	LI	Clearing and Grading	09/14/99	2,210.00	Facilities
13	LI	Parking Lot	10/23/00	16,750.00	Facilities

<u>System No</u>	<u>Class</u>	<u>Description</u>	<u>In Svc Date</u>	<u>Acq Value</u>	<u>Department</u>
14	LI	Parking Lot Flood Lights	11/12/00	5,220.00	Facilities
15	LI	Sidewalk	12/18/00	2,450.00	Facilities
66	LI	Landscaping	09/11/02	7,400.00	Facilities

Count = 5

LI SubTotal: \$34,030.00

Class = ME

196	ME	SOMething Different	01/01/04	1,000.00	
197	ME	EQ1	01/01/04	1,000.00	
198	ME	EQ1	01/01/04	1,000.00	
199	ME		01/01/04	30,000.00	
148	ME	Tiller Attachment	05/15/07	5,500.00	Agriculture
149	ME	Milking Machine	05/15/07	2,250.00	Agriculture
150	ME	Pasteurizer	06/01/07	32,999.00	Agriculture
105	ME	Store Sink	02/23/04	375.00	Facilities
160	ME	Delivery Van II	12/21/07	38,625.00	Facilities
5	ME	Conveyor Belt	02/02/00	4,650.00	Mfg Operations
7	ME	Bread Moulder (i)	11/19/00	34,500.00	Mfg Operations
8	ME	Doughnut Glazer	02/18/00	1,475.00	Mfg Operations
9	ME	Doughnut Fryer	02/20/00	3,250.00	Mfg Operations
10	ME	Doughnut Tumbler	02/21/00	2,450.00	Mfg Operations
26	ME	Bread/Bagel Slicer	03/08/01	2,450.00	Mfg Operations
28	ME	Doughnut Molder	05/01/01	2,600.00	Mfg Operations
33	ME	Table Mixer	10/01/01	1,250.00	Mfg Operations
43	ME	Mustang II Wrapper	02/12/02	28,500.00	Mfg Operations
44	ME	Automatic Cookie Depositor	03/01/02	7,740.00	Mfg Operations
60	ME	Nissan Forklift	07/27/02	5,785.00	Mfg Operations
72	ME	Milk Shake Machine (Single Unit)	10/27/02	198.00	Mfg Operations
76	ME	Conveyor Oven (i)	11/21/02	34,025.00	Mfg Operations
77	ME	Baking Pans	12/03/02	1,120.00	Mfg Operations
80	ME	String Tiegng Machine	02/08/03	2,250.00	Mfg Operations
81	ME	Oven Racks	03/13/03	1,875.00	Mfg Operations
85	ME	Pot & Pan Washer	05/07/03	5,850.00	Mfg Operations
86	ME	Automatic Cake Slicer	05/15/03	19,875.00	Mfg Operations
87	ME	Trash Compactor	06/05/03	1,000.00	Mfg Operations
88	ME	Proof Box (i)	06/10/03	3,045.00	Mfg Operations
89	ME	Pan Greaser	07/20/03	5,300.00	Mfg Operations
90	ME	Sheet Pan Depositor	08/02/03	4,525.00	Mfg Operations
94	ME	Dough Sheeter	10/20/03	4,500.00	Mfg Operations
109	ME	Double Door Roll In Proofer	04/12/04	110,000.00	Mfg Operations
110	ME	Store Product Wrapper	04/18/04	22,000.00	Mfg Operations
139	ME	Production Line Equipment	11/22/04	125,000.00	Mfg Operations
140	ME	Donut Filler - replacement	10/02/04	2,175.46	Mfg Operations
141	ME	Quart Mixer - replacement	08/15/04	14,925.00	Mfg Operations
162	ME	Spiral Mixer	03/15/08	22,428.00	Mfg Operations
163	ME	Convection Oven (i)	04/22/08	3,045.75	Mfg Operations
176	ME	2 Dough Rounders	09/24/08	140,016.00	Mfg Operations
180	ME	Industrial Conveyer Oven 1	09/30/08	250,000.00	Mfg Operations
181	ME	Industrial Conveyer Oven 2	09/30/08	250,000.00	Mfg Operations
202	ME	Industrial Conveyer Oven 1	09/30/08	250,000.00	Mfg Operations
203	ME	Industrial Conveyer Oven 1	09/30/08	250,000.00	Mfg Operations
204	ME	Industrial Conveyer Oven 1	09/30/08	250,000.00	Mfg Operations

<u>System No</u>	<u>Class</u>	<u>Description</u>	<u>In Svc Date</u>	<u>Acq Value</u>	<u>Department</u>
205	ME	Industrial Conveyer Oven 1	09/30/08	250,000.00	Mfg Operations
39	ME	Store Sink	12/10/01	375.00	Retail Operations
68	ME	Euro Front Display Cases	10/09/02	795.00	Retail Operations
69	ME	Refrigerated Display Case	10/09/02	5,950.00	Retail Operations
70	ME	Automatic Coffee Machines	10/12/02	880.00	Retail Operations
71	ME	Cafe Microwave	10/14/02	1,141.98	Retail Operations
73	ME	Cash Register	11/01/02	495.00	Retail Operations
74	ME	Cold Beverage Dispenser	11/07/02	1,175.00	Retail Operations
75	ME	Automatic Ice Dispenser	11/13/02	1,510.00	Retail Operations
113	ME	Beverage Coolers	07/05/04	6,350.00	Retail Operations
120	ME	Euro Front Display Cases	09/12/04	5,724.00	Retail Operations
121	ME	Refrigerated Display Case	09/12/04	24,750.50	Retail Operations
123	ME	Automatic Coffee Machines	09/20/04	880.00	Retail Operations
124	ME	Automatic Ice Dispenser	09/20/04	1,240.00	Retail Operations
125	ME	Cold Beverage Dispenser	09/20/04	1,175.00	Retail Operations
127	ME	Cafe Microwave	09/29/04	380.66	Retail Operations
128	ME	Cash Register	09/29/04	495.00	Retail Operations
152	ME	Garbage Disposal System	09/20/07	650.00	Retail Operations
155	ME	Coffee Machine	09/29/07	886.00	Retail Operations
156	ME	Credit Card Machine	09/29/07	210.00	Retail Operations
165	ME	Gourmet Juice System	05/25/08	2,717.00	Retail Operations
167	ME	3 Door Freezer	05/30/08	6,357.38	Retail Operations
168	ME	Auto Espresso and Cappuccino Machine (i)	05/25/08	19,550.00	Retail Operations
172	ME	Display Case	07/12/08	5,998.61	Retail Operations
178	ME	2 Door Refriqerator	10/20/08	3,096.72	Retail Operations
179	ME	Auto Espresso and Cappuccino Machine (i)	12/05/08	19,550.00	Retail Operations
Count =	71				
			ME	SubTotal:	\$2,342,885.06
Grand Total:		189		\$2,832,113.12	

Parameter inputs & Calculation fields

Westfield

Report is for: Internal

Exchange Rate on 6/17/10 is **\$1.00** U.S. Dollar to **\$0.97** Canadian Dollar

<i>US Dollar Currency</i>				<i>Canadian Dollar Currency</i>			
<u>Co Asset Number</u>	<u>Acquisition Cost</u>	<u>Current Accumulated</u>	<u>Net Book Value</u>	<u>Conversion Rate Acquisition Cost</u>	<u>Conversion Rate Current Accumulated</u>	<u>Conversion Rate Net Book Value</u>	<u>Current Depreciation Through Date</u>
100100	\$1,225,000.00	\$0.00	1,225,000.00	1,191,214.50	0.00	1,191,214.50	12/31/2008
100110	675,000.00	675,000.00	0.00	656,383.50	656,383.50	0.00	12/31/2008
100120	2,210.00	1,031.33	1,178.67	2,149.05	1,002.89	1,146.16	12/31/2008
100130	2,075.00	2,075.00	0.00	2,017.77	2,017.77	0.00	12/31/2008
100140	4,650.00	4,650.00	0.00	4,521.75	4,521.75	0.00	12/31/2008
100150	424.00	424.00	0.00	412.31	412.31	0.00	12/31/2008
100160	34,500.00	34,500.00	0.00	33,548.49	33,548.49	0.00	12/31/2008
100170	1,475.00	1,475.00	0.00	1,434.32	1,434.32	0.00	12/31/2008
100180	3,250.00	3,250.00	0.00	3,160.37	3,160.37	0.00	12/31/2008
100190	2,450.00	2,450.00	0.00	2,382.43	2,382.43	0.00	12/31/2008
100200	875.00	875.00	0.00	850.87	850.87	0.00	3/31/2004
100210	3,299.00	3,299.00	0.00	3,208.01	3,208.01	0.00	7/31/2008
100220	16,750.00	13,818.75	2,931.25	16,288.04	13,437.63	2,850.41	12/31/2008
100230	5,220.00	4,263.00	957.00	5,076.03	4,145.43	930.61	12/31/2008
100240	2,450.00	1,980.42	469.58	2,382.43	1,925.80	456.63	12/31/2008
100250	1,092.00	1,092.00	0.00	1,061.88	1,061.88	0.00	10/31/2004
100260	6,627.00	2,706.03	3,920.97	6,444.23	2,631.40	3,812.83	12/31/2008
100270	4,300.00	1,809.58	2,490.42	4,181.41	1,759.67	2,421.73	12/31/2008
100280	6,900.00	4,485.00	2,415.00	6,709.70	4,361.30	2,348.39	4/30/2004
100290	179.00	179.00	0.00	174.06	174.06	0.00	12/31/2008

Parameter inputs & Calculation fields

Westfield

Report is for: Internal

Exchange Rate on 6/17/10 is **\$1.00** U.S. Dollar to **\$0.97** Canadian Dollar

US Dollar Currency

Canadian Dollar Currency

<u>Co Asset Number</u>	<u>Acquisition Cost</u>	<u>Current Accumulated</u>	<u>Net Book Value</u>	<u>Conversion Rate Acquisition Cost</u>	<u>Conversion Rate Current Accumulated</u>	<u>Conversion Rate Net Book Value</u>	<u>Current Depreciation Through Date</u>
100300	\$399.00	\$399.00	0.00	388.00	388.00	0.00	12/31/2008
100305	4,500.00	4,500.00	0.00	4,375.89	4,375.89	0.00	12/31/2008
100310	1,129.00	1,129.00	0.00	1,097.86	1,097.86	0.00	12/31/2008
100320	12,000.00	9,500.00	2,500.00	11,669.04	9,237.99	2,431.05	12/31/2008
100330	99.00	99.00	0.00	96.27	96.27	0.00	12/31/2008
100340	2,450.00	2,450.00	0.00	2,382.43	2,382.43	0.00	12/31/2008
100350	1,795.00	1,795.00	0.00	1,745.49	1,745.49	0.00	12/31/2008
100360	2,600.00	2,600.00	0.00	2,528.29	2,528.29	0.00	12/31/2008
100370	993.00	993.00	0.00	965.61	965.61	0.00	12/31/2008
100380	8,900.00	8,900.00	0.00	8,654.54	8,654.54	0.00	8/31/2008
100390	3,126.00	2,344.50	781.50	3,039.78	2,279.84	759.95	12/31/2008
100400	4,699.95	1,723.33	2,976.62	4,570.33	1,675.80	2,894.52	12/31/2008
100410	1,250.00	1,250.00	0.00	1,215.53	1,215.53	0.00	12/31/2008
100420	800.00	580.00	220.00	777.94	564.00	213.93	12/31/2008
100430	400.00	286.67	113.33	388.97	278.76	110.20	12/31/2008
100440	225.00	161.25	63.75	218.79	156.80	61.99	12/31/2008
100450	276.87	276.87	0.00	269.23	269.23	0.00	12/31/2008
100460	12,650.00	8,960.42	3,689.58	12,301.11	8,713.29	3,587.82	12/31/2008
100470	375.00	375.00	0.00	364.66	364.66	0.00	12/31/2008
100480	24,505.00	24,505.00	0.00	23,829.15	23,829.15	0.00	12/31/2008
100490	3,875.00	2,712.50	1,162.50	3,768.13	2,637.69	1,130.44	12/31/2008

Parameter inputs & Calculation fields

Westfield

Report is for: Internal

Exchange Rate on 6/17/10 is **\$1.00** U.S. Dollar to **\$0.97** Canadian Dollar

US Dollar Currency

Canadian Dollar Currency

<u>Co Asset Number</u>	<u>Acquisition Cost</u>	<u>Current Accumulated</u>	<u>Net Book Value</u>	<u>Conversion Rate Acquisition Cost</u>	<u>Conversion Rate Current Accumulated</u>	<u>Conversion Rate Net Book Value</u>	<u>Current Depreciation Through Date</u>
100500	\$129.50	\$129.50	0.00	125.93	125.93	0.00	12/31/2008
100510	28,500.00	28,500.00	0.00	27,713.97	27,713.97	0.00	12/31/2008
100520	7,740.00	7,740.00	0.00	7,526.53	7,526.53	0.00	12/31/2008
100530	1,530.00	1,530.00	0.00	1,487.80	1,487.80	0.00	12/31/2008
100540	450.00	307.50	142.50	437.59	299.02	138.57	12/31/2008
100550	1,200.00	810.00	390.00	1,166.90	787.66	379.24	12/31/2008
100560	88.90	88.90	0.00	86.45	86.45	0.00	12/31/2008
100570	225.00	225.00	0.00	218.79	218.79	0.00	12/31/2008
100580	85.00	85.00	0.00	82.66	82.66	0.00	12/31/2008
100590	4,800.00	3,200.00	1,600.00	4,667.62	3,111.74	1,555.87	12/31/2008
100600	170.00	170.00	0.00	165.31	165.31	0.00	12/31/2008
100610	60.00	60.00	0.00	58.35	58.35	0.00	12/31/2008
100620	4,840.00	4,840.00	0.00	4,706.51	4,706.51	0.00	12/31/2008
100630	2,200.00	2,200.00	0.00	2,139.32	2,139.32	0.00	12/31/2008
100640	2,750.88	2,750.88	0.00	2,675.01	2,675.01	0.00	12/31/2008
100650	5,248.00	5,248.00	0.00	5,103.26	5,103.26	0.00	12/31/2008
100660	450.00	296.25	153.75	437.59	288.08	149.51	12/31/2008
100670	606.00	606.00	0.00	589.29	589.29	0.00	12/31/2008
100680	5,785.00	5,785.00	0.00	5,625.45	5,625.45	0.00	12/31/2008
100690	119.00	119.00	0.00	115.72	115.72	0.00	12/31/2008
100700	540.00	540.00	0.00	525.11	525.11	0.00	12/31/2008

Parameter inputs & Calculation fields

Westfield

Report is for: Internal

Exchange Rate on 6/17/10 is **\$1.00** U.S. Dollar to **\$0.97** Canadian Dollar

US Dollar Currency

Canadian Dollar Currency

<u>Co Asset Number</u>	<u>Acquisition Cost</u>	<u>Current Accumulated</u>	<u>Net Book Value</u>	<u>Conversion Rate Acquisition Cost</u>	<u>Conversion Rate Current Accumulated</u>	<u>Conversion Rate Net Book Value</u>	<u>Current Depreciation Through Date</u>
100710	\$275.00	\$275.00	0.00	267.42	267.42	0.00	12/31/2008
100720	297.00	297.00	0.00	288.81	288.81	0.00	12/31/2008
100730	3,500.00	3,500.00	0.00	3,403.47	3,403.47	0.00	12/31/2008
100740	7,400.00	4,686.67	2,713.33	7,195.91	4,557.41	2,638.50	12/31/2008
100750	500.00	500.00	0.00	486.21	486.21	0.00	12/31/2008
100760	795.00	795.00	0.00	773.07	773.07	0.00	12/31/2008
100770	5,950.00	5,950.00	0.00	5,785.90	5,785.90	0.00	12/31/2008
100780	880.00	880.00	0.00	855.73	855.73	0.00	12/31/2008
100790	1,141.98	1,141.98	0.00	1,110.48	1,110.48	0.00	12/31/2008
100800	198.00	198.00	0.00	192.54	192.54	0.00	12/31/2008
100810	495.00	495.00	0.00	481.35	481.35	0.00	12/31/2008
100820	1,175.00	1,175.00	0.00	1,142.59	1,142.59	0.00	12/31/2008
100830	1,510.00	1,510.00	0.00	1,468.35	1,468.35	0.00	12/31/2008
100840	34,025.00	34,025.00	0.00	33,086.59	33,086.59	0.00	12/31/2008
100850	1,120.00	1,120.00	0.00	1,089.11	1,089.11	0.00	12/31/2008
100860	1,200.00	720.00	480.00	1,166.90	700.14	466.76	12/31/2008
100870	3,650.00	2,190.00	1,460.00	3,549.33	2,129.60	1,419.73	12/31/2008
100880	2,250.00	2,250.00	0.00	2,187.95	2,187.95	0.00	12/31/2008
100890	1,875.00	1,875.00	0.00	1,823.29	1,823.29	0.00	12/31/2008
100900	42.50	0.00	42.50	41.33	0.00	41.33	
100910	2,525.00	1,472.92	1,052.08	2,455.36	1,432.30	1,023.06	12/31/2008

Parameter inputs & Calculation fields

Westfield

Report is for: Internal

Exchange Rate on 6/17/10 is **\$1.00** U.S. Dollar to **\$0.97** Canadian Dollar

US Dollar Currency

Canadian Dollar Currency

<u>Co Asset Number</u>	<u>Acquisition Cost</u>	<u>Current Accumulated</u>	<u>Net Book Value</u>	<u>Conversion Rate Acquisition Cost</u>	<u>Conversion Rate Current Accumulated</u>	<u>Conversion Rate Net Book Value</u>	<u>Current Depreciation Through Date</u>
100920	\$444.50	\$444.50	0.00	432.24	432.24	0.00	12/31/2008
100930	5,850.00	5,850.00	0.00	5,688.66	5,688.66	0.00	12/31/2008
100940	19,875.00	19,875.00	0.00	19,326.85	19,326.85	0.00	12/31/2008
100950	1,000.00	1,000.00	0.00	972.42	972.42	0.00	12/31/2008
100960	3,045.00	3,045.00	0.00	2,961.02	2,961.02	0.00	12/31/2008
100970	5,300.00	5,300.00	0.00	5,153.83	5,153.83	0.00	12/31/2008
100980	4,525.00	4,525.00	0.00	4,400.20	4,400.20	0.00	12/31/2008
100990	1,600.00	1,600.00	0.00	1,555.87	1,555.87	0.00	12/31/2008
101000	1,143.00	1,143.00	0.00	1,111.48	1,111.48	0.00	12/31/2008
101010	700.00	700.00	0.00	680.69	680.69	0.00	12/31/2008
101020	4,500.00	4,500.00	0.00	4,375.89	4,375.89	0.00	12/31/2008
101030	212.50	212.50	0.00	206.64	206.64	0.00	12/31/2008
101040	250.00	250.00	0.00	243.11	243.11	0.00	12/31/2008
101050	2,250.00	2,250.00	0.00	2,187.95	2,187.95	0.00	12/31/2008
101060	5,750.00	5,750.00	0.00	5,591.42	5,591.42	0.00	12/31/2008
101070	275.00	135.21	139.79	267.42	131.48	135.93	12/31/2008
101080	135.00	66.38	68.62	131.28	64.55	66.73	12/31/2008
101090	535.00	263.04	271.96	520.24	255.79	264.46	12/31/2008
101100	3,000.00	737.50	2,262.50	2,917.26	717.16	2,200.10	12/31/2008
101110	3,800.00	1,868.33	1,931.67	3,695.20	1,816.80	1,878.39	12/31/2008
101120	2,940.00	1,445.50	1,494.50	2,858.91	1,405.63	1,453.28	12/31/2008

Parameter inputs & Calculation fields

Westfield

Report is for: Internal

Exchange Rate on 6/17/10 is **\$1.00** U.S. Dollar to **\$0.97** Canadian Dollar

US Dollar Currency

Canadian Dollar Currency

<u>Co Asset Number</u>	<u>Acquisition Cost</u>	<u>Current Accumulated</u>	<u>Net Book Value</u>	<u>Conversion Rate Acquisition Cost</u>	<u>Conversion Rate Current Accumulated</u>	<u>Conversion Rate Net Book Value</u>	<u>Current Depreciation Through Date</u>
101130	\$375.00	\$368.75	6.25	364.66	358.58	6.08	12/31/2008
101140	840.00	840.00	0.00	816.83	816.83	0.00	12/31/2008
101150	6,200.00	2,996.67	3,203.33	6,029.00	2,914.02	3,114.98	12/31/2008
101160	2,624.00	2,536.53	87.47	2,551.63	2,466.57	85.06	12/31/2008
101170	110,000.00	19,000.00	1,000.00	106,966.20	18,475.98	972.42	12/31/2008
101180	22,000.00	0.00	0.00	21,393.24	0.00	0.00	12/31/2008
101190	2,700.00	1,215.00	1,485.00	2,625.53	1,181.49	1,444.04	12/31/2008
101200	4,800.00	2,160.00	2,640.00	4,667.62	2,100.43	2,567.19	12/31/2008
101210	6,350.00	5,715.00	635.00	6,174.87	5,557.38	617.49	12/31/2008
101220	1,755.43	789.93	965.50	1,707.02	768.14	938.87	12/31/2008
101230	606.00	545.40	60.60	589.29	530.36	58.93	12/31/2008
101240	2,420.00	2,137.67	282.33	2,353.26	2,078.71	274.54	12/31/2008
101250	1,760.00	1,554.67	205.33	1,711.46	1,511.79	199.67	12/31/2008
101260	450.00	198.75	251.25	437.59	193.27	244.32	12/31/2008
101270	325.00	287.08	37.92	316.04	279.16	36.87	12/31/2008
101280	5,724.00	4,960.80	763.20	5,566.13	4,823.98	742.15	12/31/2008
101290	24,750.50	21,450.43	3,300.07	24,067.88	20,858.83	3,209.05	12/31/2008
101300	15,000.00	0.00	0.00	14,586.30	0.00	0.00	12/31/2008
101310	880.00	762.67	117.33	855.73	741.64	114.09	12/31/2008
101320	1,240.00	1,074.67	165.33	1,205.80	1,045.03	160.77	12/31/2008
101330	1,175.00	1,018.33	156.67	1,142.59	990.24	152.35	12/31/2008

Parameter inputs & Calculation fields

Westfield

Report is for: Internal

Exchange Rate on 6/17/10 is **\$1.00** U.S. Dollar to **\$0.97** Canadian Dollar

US Dollar Currency

Canadian Dollar Currency

<u>Co Asset Number</u>	<u>Acquisition Cost</u>	<u>Current Accumulated</u>	<u>Net Book Value</u>	<u>Conversion Rate Acquisition Cost</u>	<u>Conversion Rate Current Accumulated</u>	<u>Conversion Rate Net Book Value</u>	<u>Current Depreciation Through Date</u>
101340	\$360.00	\$312.00	48.00	350.07	303.40	46.68	12/31/2008
101350	380.66	329.90	50.76	370.16	320.80	49.36	12/31/2008
101360	495.00	214.50	280.50	481.35	208.58	272.76	12/31/2008
101370	1,200.00	1,040.00	160.00	1,166.90	1,011.32	155.59	12/31/2008
101380	275.00	233.75	41.25	267.42	227.30	40.11	12/31/2008
101390	762.00	647.70	114.30	740.98	629.84	111.15	12/31/2008
101400	28,950.00	23,642.50	5,307.50	28,151.56	22,990.44	5,161.12	12/31/2008
101510	5,444.28	1,905.50	3,538.78	5,294.13	1,852.95	3,441.18	12/31/2008
Budge1	50,000.00	0.00	50,000.00	48,621.00	0.00	48,621.00	
Budge2	20,000.00	0.00	20,000.00	19,448.40	0.00	19,448.40	
Budge3	10,000.00	0.00	10,000.00	9,724.20	0.00	9,724.20	
Budge4	15,000.00	0.00	15,000.00	14,586.30	0.00	14,586.30	
101515	228,000.00	0.00	228,000.00	221,711.76	0.00	221,711.76	
101559	125,000.00	10,416.67	14,583.33	121,552.50	10,129.38	14,181.12	12/31/2008
101560	2,175.46	1,849.13	326.33	2,115.46	1,798.13	317.33	12/31/2008
101561	14,925.00	13,183.75	1,741.25	14,513.37	12,820.14	1,693.23	12/31/2008
101562	1,092.00	1,092.00	0.00	1,061.88	1,061.88	0.00	12/31/2008
101565	52,241.00	45,275.53	6,965.47	50,800.19	44,026.83	6,773.36	12/31/2008
101570	59,904.00	4,118.40	55,785.60	58,251.85	4,004.81	54,247.03	12/31/2008
101575	98,000.00	6,329.17	91,670.83	95,297.16	6,154.61	89,142.55	12/31/2008
101580	15,000.00	3,750.00	11,250.00	14,586.30	3,646.58	10,939.73	12/31/2008

Parameter inputs & Calculation fields

Westfield

Report is for: Internal

Exchange Rate on 6/17/10 is **\$1.00** U.S. Dollar to **\$0.97** Canadian Dollar

US Dollar Currency

Canadian Dollar Currency

<u>Co Asset Number</u>	<u>Acquisition Cost</u>	<u>Current Accumulated</u>	<u>Net Book Value</u>	<u>Conversion Rate Acquisition Cost</u>	<u>Conversion Rate Current Accumulated</u>	<u>Conversion Rate Net Book Value</u>	<u>Current Depreciation Through Date</u>
101585	\$39,999.00	\$6,666.50	33,332.50	38,895.83	6,482.64	32,413.19	12/31/2008
101590	5,500.00	916.67	4,583.33	5,348.31	891.39	4,456.92	12/31/2008
101595	2,250.00	375.00	1,875.00	2,187.95	364.66	1,823.29	12/31/2008
102100	32,999.00	5,224.84	27,774.16	32,088.89	5,080.74	27,008.15	12/31/2008
102105	45,000.00	6,750.00	38,250.00	43,758.90	6,563.84	37,195.07	12/31/2008
102605	650.00	173.33	476.67	632.07	168.55	463.52	12/31/2008
102606	785.00	170.08	614.92	763.35	165.39	597.96	10/31/2008
102610	2,760.00	736.00	2,024.00	2,683.88	715.70	1,968.18	12/31/2008
102615	886.00	168.76	717.24	861.56	164.11	697.46	12/31/2008
102620	210.00	56.00	154.00	204.21	54.46	149.75	12/31/2008
102625	250.00	66.67	183.33	243.11	64.83	178.27	12/31/2008
102630	130.00	32.50	97.50	126.41	31.60	94.81	12/31/2008
102635	381.00	95.25	285.75	370.49	92.62	277.87	12/31/2008
102640	38,625.00	8,368.75	30,256.25	37,559.72	8,137.94	29,421.78	12/31/2008
102645	2,200.00	82.50	2,117.50	2,139.32	80.22	2,059.10	12/31/2008
102646	22,428.00	1,869.00	20,559.00	21,809.44	1,817.45	19,991.98	12/31/2008
102647	3,045.75	228.43	2,817.32	2,961.75	222.13	2,739.62	12/31/2008
102648	5,592.00	372.80	5,219.20	5,437.77	362.52	5,075.25	12/31/2008
102650	2,717.00	181.13	2,535.87	2,642.07	176.13	2,465.93	12/31/2008
102649	48.75	0.00	48.75	47.41	0.00	47.41	
102651	6,357.38	423.83	5,933.55	6,182.04	412.14	5,769.90	12/31/2008

Parameter inputs & Calculation fields

Westfield

Report is for: Internal

Exchange Rate on 6/17/10 is **\$1.00** U.S. Dollar to **\$0.97** Canadian Dollar

US Dollar Currency

Canadian Dollar Currency

<u>Co Asset Number</u>	<u>Acquisition Cost</u>	<u>Current Accumulated</u>	<u>Net Book Value</u>	<u>Conversion Rate Acquisition Cost</u>	<u>Conversion Rate Current Accumulated</u>	<u>Conversion Rate Net Book Value</u>	<u>Current Depreciation Through Date</u>
877621	\$0.00	\$0.00	0.00	0.00	0.00	0.00	
877621	0.00	0.00	0.00	0.00	0.00	0.00	
877621	0.00	0.00	0.00	0.00	0.00	0.00	
877621	0.00	0.00	0.00	0.00	0.00	0.00	
877621	0.00	0.00	0.00	0.00	0.00	0.00	
	0.00	0.00	0.00	0.00	0.00	0.00	
154321	1,000.00	0.00	1,000.00	972.42	0.00	972.42	
154321	1,000.00	0.00	1,000.00	972.42	0.00	972.42	
154321	1,000.00	0.00	1,000.00	972.42	0.00	972.42	
	30,000.00	0.00	30,000.00	29,172.60	0.00	29,172.60	
674344	0.00	0.00	0.00	0.00	0.00	0.00	
876543	0.00	0.00	0.00	0.00	0.00	0.00	
102655	250,000.00	8,333.33	241,666.67	243,105.00	8,103.50	235,001.50	12/31/2008
102655	250,000.00	8,333.33	241,666.67	243,105.00	8,103.50	235,001.50	12/31/2008
102655	250,000.00	8,333.33	241,666.67	243,105.00	8,103.50	235,001.50	12/31/2008
102655	250,000.00	8,333.33	241,666.67	243,105.00	8,103.50	235,001.50	12/31/2008
100290	179.00	179.00	0.00	174.06	174.06	0.00	12/31/2008
100290	179.00	179.00	0.00	174.06	174.06	0.00	12/31/2008
876438	10,000.00	0.00	10,000.00	9,724.20	0.00	9,724.20	
100350	1,795.00	1,795.00	0.00	1,745.49	1,745.49	0.00	12/31/2008
100350	1,795.00	1,795.00	0.00	1,745.49	1,745.49	0.00	12/31/2008

Parameter inputs & Calculation fields

Westfield

Report is for: Internal

Exchange Rate on 6/17/10 is **\$1.00** U.S. Dollar to **\$0.97** Canadian Dollar

US Dollar Currency

Canadian Dollar Currency

<u>Co Asset</u> <u>Number</u>	<u>Acquisition</u> <u>Cost</u>	<u>Current</u> <u>Accumulated</u>	<u>Net Book</u> <u>Value</u>	<u>Conversion Rate</u> <u>Acquisition Cost</u>	<u>Conversion Rate</u> <u>Current Accumulated</u>	<u>Conversion Rate</u> <u>Net Book Value</u>	<u>Current</u> <u>Depreciation</u> <u>Through Date</u>
	<u>\$5,250,443.12</u>	<u>\$1,307,163.00</u>	<u>\$3,716,280.12</u>	<u>5,105,635.90</u>	<u>1,271,111.44</u>	<u>3,613,785.11</u>	

Asset
Count: 207

Westfield

FASB Statement #1

Multi Currency - US Dollar to Japanese Yen Conversion

<u>Conversion Rate % for YTD 2006</u>	112.83	<u>Conversion Rate Date YTD 2006</u>	06/01/2006
<u>Conversion Rate % for YTD 2007</u>	130.67	<u>Conversion Rate Date YTD 2007</u>	06/01/2007
<u>Conversion Rate Type</u>	Month		
<u>Conversion Rate Source</u>	http://www.exchange-rates.org/ <u>Reporting Currency:</u> Japanese Yen		

				Functional Currency U.S. Dollar \$			Reporting Currency Japanese Yen ¥		
Asset ID	Description	PIS Date (Int)	Current Thru Date (Int)	Acquisition Value (Int)	Current YTD 2006	Current YTD 2007	Current YTD 2006	Current YTD 2007	Difference 2006/2007
000003	Clearing and Grading	09/14/1999	12/31/2008	\$ 2,210.00		110.50	¥	14439.4770	
000013	Parking Lot	10/23/2000	12/31/2008	\$ 16,750.00		1,675.00	¥	218878.9500	
000014	Parking Lot Flood Lights	11/12/2000	12/31/2008	\$ 5,220.00		522.00	¥	68211.8280	
000015	Sidewalk	12/18/2000	12/31/2008	\$ 2,450.00		245.00	¥	32015.1300	
000017	Fire Alarm System	11/03/2000	12/31/2008	\$ 6,627.00		331.35	¥	43298.8299	
000018	Ventilation System	08/15/2000	12/31/2008	\$ 4,300.00		215.00	¥	28094.9100	
000019	Quart Mixer	01/04/2001	04/30/2004	\$ 6,900.00		345.00	¥	45082.5300	
000024	Countertops	02/20/2001	12/31/2008	\$ 12,000.00		1,200.00	¥	156808.8000	
000031	Bakery Sign	07/30/2001	12/31/2008	\$ 3,126.00		312.60	¥	40848.6924	
000032	Air conditioning	09/06/2001	12/31/2008	\$ 4,699.95		235.00	¥	30708.3900	
000034	Recess Lighting	10/11/2001	12/31/2008	\$ 800.00		80.00	¥	10453.9200	
000035	Emergency Exit Lighting	11/11/2001	12/31/2008	\$ 400.00		40.00	¥	5226.9600	
000036	Emergency Exit Signs	11/11/2001	12/31/2008	\$ 225.00		22.50	¥	2940.1650	
000038	Ceramic Tile	12/01/2001	12/31/2008	\$ 12,650.00		1,265.00	¥	165302.6100	
000041	Sprinkler System	01/12/2002	12/31/2008	\$ 3,875.00		387.50	¥	50636.1750	
000046	Shelving	03/31/2002	12/31/2008	\$ 450.00		45.00	¥	5880.3300	
000047	Wallpaper	04/01/2002	12/31/2008	\$ 1,200.00		120.00	¥	15680.8800	
000051	Storefront Awning	05/18/2002	12/31/2008	\$ 4,800.00		480.00	¥	62723.5200	
000058	Fire Extinguishers	06/30/2002	12/31/2008	\$ 450.00		45.00	¥	5880.3300	
Count of Assets	19			\$ 89,132.95		7,676.45	¥	1003112.4273	

Westfield

Conversion Rate %	90.83	Conversion Rate Source	http://www.exchange-rates.org/
Conversion Rate Type	Month	Conversion Rate Date	06/01/2010

Multi Currency - US Dollar to Japanese Yen Conversion

Asset ID	Description	Placed In Service Date (Int)	Current Prev Thru Date (Int)	Acquisition Value (Int)	Current YTD Depr (Int)	Current Net Book Value	Current Net Book Value
000001	Land - 410 E. Main St.	06/15/1982	11/30/2008	\$ 1,225,000.00	0.00	1,225,000.00	JPY ¥ 111262487.0000
000003	Clearing and Grading	09/14/1999	11/30/2008	\$ 2,210.00	110.50	1,178.67	JPY ¥ 107054.4943
000013	Parking Lot	10/23/2000	11/30/2008	\$ 16,750.00	675.00	2,931.25	JPY ¥ 266235.2368
000014	Parking Lot Flood Lights	11/12/2000	11/30/2008	\$ 5,220.00	522.00	957.00	JPY ¥ 86920.9796
000015	Sidewalk	12/18/2000	11/30/2008	\$ 2,450.00	245.00	469.58	JPY ¥ 42650.3173
000017	Fire Alarm System	11/03/2000	11/30/2008	\$ 6,627.00	331.35	3,920.97	JPY ¥ 356128.0601
000018	Ventilation System	08/15/2000	11/30/2008	\$ 4,300.00	215.00	2,490.42	JPY ¥ 226196.1819
000019	Quart Mixer	01/04/2001	04/30/2004	\$ 6,900.00	345.00	2,415.00	JPY ¥ 219346.0458
000024	Countertops	02/20/2001	11/30/2008	\$ 12,000.00	1,200.00	2,500.00	JPY ¥ 227066.3000
000031	Bakery Sign	07/30/2001	11/30/2008	\$ 3,126.00	312.60	781.50	JPY ¥ 70980.9254
000032	Air conditioning	09/06/2001	11/30/2008	\$ 4,699.95	235.00	2,976.62	JPY ¥ 270356.0360
000034	Recess Lighting	10/11/2001	11/30/2008	\$ 800.00	80.00	220.00	JPY ¥ 19981.8344
000035	Emergency Exit Lighting	11/11/2001	11/30/2008	\$ 400.00	40.00	113.33	JPY ¥ 10293.3695
000036	Emergency Exit Signs	11/11/2001	11/30/2008	\$ 225.00	22.50	63.75	JPY ¥ 5790.1906
000038	Ceramic Tile	12/01/2001	11/30/2008	\$ 12,650.00	1,265.00	3,689.58	JPY ¥ 335111.7117
000041	Sprinkler System	01/12/2002	11/30/2008	\$ 3,875.00	387.50	1,162.50	JPY ¥ 105585.8295
000046	Shelving	03/31/2002	11/30/2008	\$ 450.00	45.00	142.50	JPY ¥ 12942.7791
000047	Wallpaper	04/01/2002	11/30/2008	\$ 1,200.00	120.00	390.00	JPY ¥ 35422.3428
000051	Storefront Awning	05/18/2002	11/30/2008	\$ 4,800.00	480.00	1,600.00	JPY ¥ 145322.4320
000058	Fire Extinguishers	06/30/2002	11/30/2008	\$ 450.00	45.00	153.75	JPY ¥ 13964.5775
000066	Landscaping	09/11/2002	11/30/2008	\$ 7,400.00	740.00	2,713.33	JPY ¥ 246442.3215
000078	Restroom Partitions	01/12/2003	11/30/2008	\$ 1,200.00	120.00	480.00	JPY ¥ 43596.7296
000079	Restroom Accessories	01/17/2003	11/30/2008	\$ 3,650.00	365.00	1,460.00	JPY ¥ 132606.7192
000082	Stainless Steel Measuring Cups	03/15/2003		\$ 42.50	0.00	42.50	JPY ¥ 3860.1271
000083	Loading Dock Equipment	03/18/2003	11/30/2008	\$ 2,525.00	252.50	1,052.08	JPY ¥ 95556.7652
000099	Emergency Exit Lighting	02/10/2004	11/30/2008	\$ 275.00	27.50	139.79	JPY ¥ 12696.6392
000100	Emergency Exit Signs	02/10/2004	11/30/2008	\$ 135.00	13.50	68.62	JPY ¥ 6232.5158
				\$ 1,329,360.45	9,194.95	1,259,112.74	JPY ¥ 114360828.4619

Count of Assets **27**

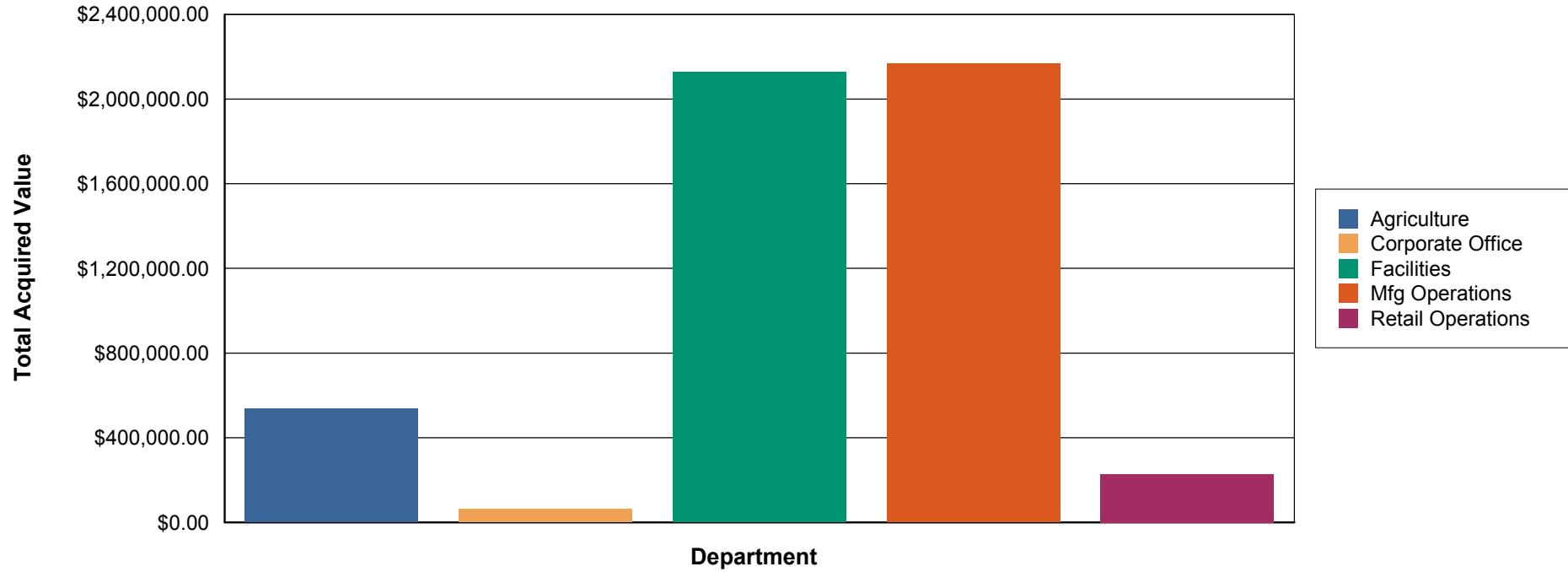
Reporting Currency:
Japanese Yen

Functional Currency: U.S. Dollar

Chart

Westfield

Total Acquired Value by Department



Agriculture	\$526,652.00
Corporate Office	62,749.87
Facilities	2,127,827.66
Mfg Operations	2,166,360.86
Retail Operations	228,252.73
	<hr/>
	\$5,111,843.1
	<hr/> <hr/>

Report is run against Internal

Company Consolidation

Kim
Westfield
Westfields Bakery

Sys No	Department	Location	Company Name	Acquisition Value	Current Accumulated	Netbook Value
Agriculture						
Westfield						
000138	Agriculture	Organic Farm	Westfield	228,000.00	0.00	228,000.00
000144	Agriculture	Organic Farm	Westfield	59,904.00	4,118.40	55,785.60
000145	Agriculture	Organic Farm	Westfield	98,000.00	6,329.17	91,670.83
000146	Agriculture	Organic Farm	Westfield	15,000.00	3,750.00	11,250.00
000147	Agriculture	Organic Farm	Westfield	39,999.00	6,666.50	33,332.50
000148	Agriculture	Organic Farm	Westfield	5,500.00	916.67	4,583.33
000149	Agriculture	Organic Farm	Westfield	2,250.00	375.00	1,875.00
000150	Agriculture	Organic Farm	Westfield	32,999.00	5,224.84	27,774.16
000151	Agriculture	Organic Farm	Westfield	45,000.00	6,750.00	38,250.00
Westfields Bakery						
000001	Agriculture	Bakery	Westfields Bakery	1,225,000.00	0.00	1,225,000.00
000138	Agriculture	Organic Farm	Westfields Bakery	228,000.00	0.00	228,000.00
000144	Agriculture	Organic Farm	Westfields Bakery	59,904.00	4,118.40	55,785.60
000145	Agriculture	Organic Farm	Westfields Bakery	98,000.00	6,329.17	91,670.83
000146	Agriculture	Organic Farm	Westfields Bakery	15,000.00	3,750.00	11,250.00
000147	Agriculture	Organic Farm	Westfields Bakery	39,999.00	6,666.50	33,332.50
000148	Agriculture	Organic Farm	Westfields Bakery	5,500.00	916.67	4,583.33
000149	Agriculture	Organic Farm	Westfields Bakery	2,250.00	375.00	1,875.00
000150	Agriculture	Organic Farm	Westfields Bakery	32,999.00	5,224.84	27,774.16
000151	Agriculture	Organic Farm	Westfields Bakery	45,000.00	6,750.00	38,250.00
Total:	19			\$2,278,304.00	\$68,261.16	\$2,210,042.84
Corporate Office						
Westfield						
000020	Corporate Office	Bakery	Westfield	179.00	179.00	0.00
000021	Corporate Office	Bakery	Westfield	399.00	399.00	0.00
000022	Corporate Office	Bakery	Westfield	4,500.00	4,500.00	0.00
000023	Corporate Office	Bakery	Westfield	1,129.00	1,129.00	0.00
000025	Corporate Office	Bakery	Westfield	99.00	99.00	0.00
000029	Corporate Office	Bakery	Westfield	993.00	993.00	0.00
000037	Corporate Office	Bakery	Westfield	276.87	276.87	0.00
000097	Corporate Office	Bakery	Westfield	2,250.00	2,250.00	0.00
000119	Corporate Office	Store #2	Westfield	325.00	287.08	37.92
000143	Corporate Office	Store #1	Westfield	52,241.00	45,275.53	6,965.47

Sys No	Department	Location	Company Name	Acquisition Value	Current Accumulated	Netbook Value
000206	Corporate Office	Bakery	Westfield	179.00	179.00	0.00
000207	Corporate Office	Bakery	Westfield	179.00	179.00	0.00
Westfields Bakery						
000020	Corporate Office	Bakery	Westfields Bakery	179.00	179.00	0.00
000021	Corporate Office	Bakery	Westfields Bakery	399.00	399.00	0.00
000022	Corporate Office	Bakery	Westfields Bakery	4,500.00	4,500.00	0.00
000023	Corporate Office	Bakery	Westfields Bakery	1,129.00	1,129.00	0.00
000025	Corporate Office	Bakery	Westfields Bakery	99.00	99.00	0.00
000029	Corporate Office	Bakery	Westfields Bakery	993.00	993.00	0.00
000037	Corporate Office	Bakery	Westfields Bakery	276.87	276.87	0.00
000097	Corporate Office	Bakery	Westfields Bakery	2,250.00	2,250.00	0.00
000119	Corporate Office	Store #2	Westfields Bakery	325.00	287.08	37.92
000143	Corporate Office	Store #1	Westfields Bakery	52,241.00	45,275.53	6,965.47
Total:	22			\$125,141.74	\$111,134.96	\$14,006.78

Facilities						
Westfield						
000001	Facilities	Bakery	Westfield	1,225,000.00	0.00	1,225,000.00
000002	Facilities	Bakery	Westfield	675,000.00	675,000.00	0.00
000003	Facilities	Bakery	Westfield	2,210.00	1,031.33	1,178.67
000013	Facilities	Store #1	Westfield	16,750.00	13,818.75	2,931.25
000014	Facilities	Store #1	Westfield	5,220.00	4,263.00	957.00
000015	Facilities	Store #1	Westfield	2,450.00	1,980.42	469.58
000017	Facilities	Bakery	Westfield	6,627.00	2,706.03	3,920.97
000018	Facilities	Bakery	Westfield	4,300.00	1,809.58	2,490.42
000024	Facilities	Bakery	Westfield	12,000.00	9,500.00	2,500.00
000031	Facilities	Store #1	Westfield	3,126.00	2,344.50	781.50
000032	Facilities	Store #1	Westfield	4,699.95	1,723.33	2,976.62
000034	Facilities	Store #1	Westfield	800.00	580.00	220.00
000035	Facilities	Store #1	Westfield	400.00	286.67	113.33
000036	Facilities	Store #1	Westfield	225.00	161.25	63.75
000038	Facilities	Store #1	Westfield	12,650.00	8,960.42	3,689.58
000040	Facilities	Bakery	Westfield	24,505.00	24,505.00	0.00
000041	Facilities	Store #1	Westfield	3,875.00	2,712.50	1,162.50
000047	Facilities	Store #1	Westfield	1,200.00	810.00	390.00
000051	Facilities	Store #1	Westfield	4,800.00	3,200.00	1,600.00
000058	Facilities	Store #1	Westfield	450.00	296.25	153.75
000062	Facilities	Store #1	Westfield	540.00	540.00	0.00
000063	Facilities	Store #1	Westfield	275.00	275.00	0.00
000066	Facilities	Store #1	Westfield	7,400.00	4,686.67	2,713.33
000078	Facilities	Store #1	Westfield	1,200.00	720.00	480.00
000079	Facilities	Store #1	Westfield	3,650.00	2,190.00	1,460.00

Sys No	Department	Location	Company Name	Acquisition Value	Current Accumulated	Netbook Value
000083	Facilities	Bakery	Westfield	2,525.00	1,472.92	1,052.08
000099	Facilities	Store #2	Westfield	275.00	135.21	139.79
000100	Facilities	Store #2	Westfield	135.00	66.38	68.62
000102	Facilities	Store #2	Westfield	3,000.00	737.50	2,262.50
000103	Facilities	Store #2	Westfield	3,800.00	1,868.33	1,931.67
000104	Facilities	Store #2	Westfield	2,940.00	1,445.50	1,494.50
000105	Facilities	Store #2	Westfield	375.00	368.75	6.25
000107	Facilities	Store #2	Westfield	6,200.00	2,996.67	3,203.33
000111	Facilities	Store #2	Westfield	2,700.00	1,215.00	1,485.00
000112	Facilities	Store #2	Westfield	4,800.00	2,160.00	2,640.00
000114	Facilities	Store #2	Westfield	1,755.43	789.93	965.50
000118	Facilities	Store #2	Westfield	450.00	198.75	251.25
000126	Facilities	Store #2	Westfield	360.00	312.00	48.00
000130	Facilities	Store #2	Westfield	275.00	233.75	41.25
000132	Facilities	Bakery	Westfield	28,950.00	23,642.50	5,307.50
000133	Facilities	Store #3	Westfield	5,444.28	1,905.50	3,538.78
000154	Facilities	Store #2	Westfield	2,760.00	736.00	2,024.00
000158	Facilities	Store #2	Westfield	130.00	32.50	97.50
000160	Facilities	Bakery	Westfield	38,625.00	8,368.75	30,256.25
000161	Facilities	Store #3	Westfield	2,200.00	82.50	2,117.50
000177	Facilities	Store #3	Westfield	775.00	4.84	770.16
Westfields Bakery						
000002	Facilities	Bakery	Westfields Bakery	675,000.00	675,000.00	0.00
000003	Facilities	Bakery	Westfields Bakery	2,210.00	1,031.33	1,178.67
000013	Facilities	Store #1	Westfields Bakery	16,750.00	13,818.75	2,931.25
000014	Facilities	Store #1	Westfields Bakery	5,220.00	4,263.00	957.00
000015	Facilities	Store #1	Westfields Bakery	2,450.00	1,980.42	469.58
000017	Facilities	Bakery	Westfields Bakery	6,627.00	2,706.03	3,920.97
000018	Facilities	Bakery	Westfields Bakery	4,300.00	1,809.58	2,490.42
000024	Facilities	Bakery	Westfields Bakery	12,000.00	9,500.00	2,500.00
000031	Facilities	Store #1	Westfields Bakery	3,126.00	2,344.50	781.50
000032	Facilities	Store #1	Westfields Bakery	4,699.95	1,723.33	2,976.62
000034	Facilities	Store #1	Westfields Bakery	800.00	580.00	220.00
000035	Facilities	Store #1	Westfields Bakery	400.00	286.67	113.33
000036	Facilities	Store #1	Westfields Bakery	225.00	161.25	63.75
000038	Facilities	Store #1	Westfields Bakery	12,650.00	8,960.42	3,689.58
000040	Facilities	Bakery	Westfields Bakery	24,505.00	24,505.00	0.00
000041	Facilities	Store #1	Westfields Bakery	3,875.00	2,712.50	1,162.50
000047	Facilities	Store #1	Westfields Bakery	1,200.00	810.00	390.00
000051	Facilities	Store #1	Westfields Bakery	4,800.00	3,200.00	1,600.00
000058	Facilities	Store #1	Westfields Bakery	450.00	296.25	153.75

Sys No	Department	Location	Company Name	Acquisition Value	Current Accumulated	Netbook Value
000062	Facilities	Store #1	Westfields Bakery	540.00	540.00	0.00
000063	Facilities	Store #1	Westfields Bakery	275.00	275.00	0.00
000066	Facilities	Store #1	Westfields Bakery	7,400.00	4,686.67	2,713.33
000078	Facilities	Store #1	Westfields Bakery	1,200.00	720.00	480.00
000079	Facilities	Store #1	Westfields Bakery	3,650.00	2,190.00	1,460.00
000083	Facilities	Bakery	Westfields Bakery	2,525.00	1,472.92	1,052.08
000099	Facilities	Store #2	Westfields Bakery	275.00	135.21	139.79
000100	Facilities	Store #2	Westfields Bakery	135.00	66.38	68.62
000102	Facilities	Store #2	Westfields Bakery	3,000.00	737.50	2,262.50
000103	Facilities	Store #2	Westfields Bakery	3,800.00	1,868.33	1,931.67
000104	Facilities	Store #2	Westfields Bakery	2,940.00	1,445.50	1,494.50
000105	Facilities	Store #2	Westfields Bakery	375.00	368.75	6.25
000107	Facilities	Store #2	Westfields Bakery	6,200.00	2,996.67	3,203.33
000111	Facilities	Store #2	Westfields Bakery	2,700.00	1,215.00	1,485.00
000112	Facilities	Store #2	Westfields Bakery	4,800.00	2,160.00	2,640.00
000114	Facilities	Store #2	Westfields Bakery	1,755.43	789.93	965.50
000118	Facilities	Store #2	Westfields Bakery	450.00	198.75	251.25
000126	Facilities	Store #2	Westfields Bakery	360.00	312.00	48.00
000130	Facilities	Store #2	Westfields Bakery	275.00	233.75	41.25
000132	Facilities	Bakery	Westfields Bakery	28,950.00	23,642.50	5,307.50
000133	Facilities	Store #3	Westfields Bakery	5,444.28	1,905.50	3,538.78
000154	Facilities	Store #2	Westfields Bakery	2,760.00	736.00	2,024.00
000158	Facilities	Store #2	Westfields Bakery	130.00	32.50	97.50
000160	Facilities	Bakery	Westfields Bakery	38,625.00	8,368.75	30,256.25
000161	Facilities	Store #3	Westfields Bakery	2,200.00	82.50	2,117.50
000177	Facilities	Store #3	Westfields Bakery	775.00	4.84	770.16
000224	Facilities	Store #1	Westfields Bakery	5,220.00	4,263.00	957.00
000225	Facilities	Store #1	Westfields Bakery	5,220.00	4,263.00	957.00
Total:	93			\$3,041,095.32	\$1,634,273.96	\$1,406,821.36

Mfg Operations

Westfield						
000004	Mfg Operations	Bakery	Westfield	2,075.00	2,075.00	0.00
000005	Mfg Operations	Bakery	Westfield	4,650.00	4,650.00	0.00
000006	Mfg Operations	Bakery	Westfield	424.00	424.00	0.00
000007	Mfg Operations	Bakery	Westfield	34,500.00	34,500.00	0.00
000008	Mfg Operations	Bakery	Westfield	1,475.00	1,475.00	0.00
000009	Mfg Operations	Bakery	Westfield	3,250.00	3,250.00	0.00
000010	Mfg Operations	Bakery	Westfield	2,450.00	2,450.00	0.00
000011	Mfg Operations	Bakery	Westfield	875.00	875.00	0.00
000012	Mfg Operations	Bakery	Westfield	3,299.00	3,299.00	0.00
000016	Mfg Operations	Bakery	Westfield	1,092.00	1,092.00	0.00

<u>Sys No</u>	<u>Department</u>	<u>Location</u>	<u>Company Name</u>	<u>Acquisition Value</u>	<u>Current Accumulated</u>	<u>Netbook Value</u>
000019	Mfg Operations	Bakery	Westfield	6,900.00	4,485.00	2,415.00
000026	Mfg Operations	Bakery	Westfield	2,450.00	2,450.00	0.00
000027	Mfg Operations	Bakery	Westfield	1,795.00	1,795.00	0.00
000028	Mfg Operations	Bakery	Westfield	2,600.00	2,600.00	0.00
000030	Mfg Operations	Bakery	Westfield	8,900.00	8,900.00	0.00
000033	Mfg Operations	Bakery	Westfield	1,250.00	1,250.00	0.00
000042	Mfg Operations	Bakery	Westfield	129.50	129.50	0.00
000043	Mfg Operations	Bakery	Westfield	28,500.00	28,500.00	0.00
000044	Mfg Operations	Bakery	Westfield	7,740.00	7,740.00	0.00
000045	Mfg Operations	Bakery	Westfield	1,530.00	1,530.00	0.00
000046	Mfg Operations	Bakery	Westfield	450.00	307.50	142.50
000048	Mfg Operations	Bakery	Westfield	88.90	88.90	0.00
000049	Mfg Operations	Bakery	Westfield	225.00	225.00	0.00
000050	Mfg Operations	Bakery	Westfield	85.00	85.00	0.00
000052	Mfg Operations	Bakery	Westfield	170.00	170.00	0.00
000053	Mfg Operations	Bakery	Westfield	60.00	60.00	0.00
000060	Mfg Operations	Bakery	Westfield	5,785.00	5,785.00	0.00
000064	Mfg Operations	Bakery	Westfield	297.00	297.00	0.00
000072	Mfg Operations	Store #1	Westfield	198.00	198.00	0.00
000076	Mfg Operations	Bakery	Westfield	34,025.00	34,025.00	0.00
000077	Mfg Operations	Bakery	Westfield	1,120.00	1,120.00	0.00
000080	Mfg Operations	Bakery	Westfield	2,250.00	2,250.00	0.00
000081	Mfg Operations	Bakery	Westfield	1,875.00	1,875.00	0.00
000082	Mfg Operations	Bakery	Westfield	42.50	0.00	42.50
000084	Mfg Operations	Bakery	Westfield	444.50	444.50	0.00
000085	Mfg Operations	Bakery	Westfield	5,850.00	5,850.00	0.00
000086	Mfg Operations	Bakery	Westfield	19,875.00	19,875.00	0.00
000087	Mfg Operations	Bakery	Westfield	1,000.00	1,000.00	0.00
000088	Mfg Operations	Bakery	Westfield	3,045.00	3,045.00	0.00
000089	Mfg Operations	Bakery	Westfield	5,300.00	5,300.00	0.00
000090	Mfg Operations	Bakery	Westfield	4,525.00	4,525.00	0.00
000091	Mfg Operations	Bakery	Westfield	1,600.00	1,600.00	0.00
000093	Mfg Operations	Bakery	Westfield	700.00	700.00	0.00
000094	Mfg Operations	Bakery	Westfield	4,500.00	4,500.00	0.00
000095	Mfg Operations	Bakery	Westfield	212.50	212.50	0.00
000096	Mfg Operations	Bakery	Westfield	250.00	250.00	0.00
000098	Mfg Operations	Bakery	Westfield	5,750.00	5,750.00	0.00
000106	Mfg Operations	Bakery	Westfield	840.00	840.00	0.00
000109	Mfg Operations	Bakery	Westfield	110,000.00	19,000.00	1,000.00
000110	Mfg Operations	Bakery	Westfield	22,000.00	0.00	0.00
000139	Mfg Operations	Bakery	Westfield	125,000.00	10,416.67	14,583.33

<u>Sys No</u>	<u>Department</u>	<u>Location</u>	<u>Company Name</u>	<u>Acquisition Value</u>	<u>Current Accumulated</u>	<u>Netbook Value</u>
000140	Mfg Operations	Bakery	Westfield	2,175.46	1,849.13	326.33
000141	Mfg Operations	Store #1	Westfield	14,925.00	13,183.75	1,741.25
000142	Mfg Operations	Bakery	Westfield	1,092.00	1,092.00	0.00
000162	Mfg Operations	Bakery	Westfield	22,428.00	1,869.00	20,559.00
000163	Mfg Operations	Bakery	Westfield	3,045.75	228.43	2,817.32
000164	Mfg Operations	Bakery	Westfield	5,592.00	372.80	5,219.20
000166	Mfg Operations	Bakery	Westfield	48.75	0.00	48.75
000176	Mfg Operations	Bakery	Westfield	140,016.00	4,667.20	135,348.80
000180	Mfg Operations	Bakery	Westfield	250,000.00	8,333.33	241,666.67
000181	Mfg Operations	Bakery	Westfield	250,000.00	8,333.33	241,666.67
000202	Mfg Operations	Bakery	Westfield	250,000.00	8,333.33	241,666.67
000203	Mfg Operations	Bakery	Westfield	250,000.00	8,333.33	241,666.67
000204	Mfg Operations	Bakery	Westfield	250,000.00	8,333.33	241,666.67
000205	Mfg Operations	Bakery	Westfield	250,000.00	8,333.33	241,666.67
000209	Mfg Operations	Bakery	Westfield	1,795.00	1,795.00	0.00
000210	Mfg Operations	Bakery	Westfield	1,795.00	1,795.00	0.00
Westfields Bakery						
000004	Mfg Operations	Bakery	Westfields Bakery	2,075.00	2,075.00	0.00
000005	Mfg Operations	Bakery	Westfields Bakery	4,650.00	4,650.00	0.00
000006	Mfg Operations	Bakery	Westfields Bakery	424.00	424.00	0.00
000007	Mfg Operations	Bakery	Westfields Bakery	34,500.00	34,500.00	0.00
000008	Mfg Operations	Bakery	Westfields Bakery	1,475.00	1,475.00	0.00
000009	Mfg Operations	Bakery	Westfields Bakery	3,250.00	3,250.00	0.00
000010	Mfg Operations	Bakery	Westfields Bakery	2,450.00	2,450.00	0.00
000011	Mfg Operations	Bakery	Westfields Bakery	875.00	875.00	0.00
000012	Mfg Operations	Bakery	Westfields Bakery	3,299.00	3,299.00	0.00
000016	Mfg Operations	Bakery	Westfields Bakery	1,092.00	1,092.00	0.00
000019	Mfg Operations	Bakery	Westfields Bakery	6,900.00	4,485.00	2,415.00
000026	Mfg Operations	Bakery	Westfields Bakery	2,450.00	2,450.00	0.00
000027	Mfg Operations	Bakery	Westfields Bakery	1,795.00	1,795.00	0.00
000028	Mfg Operations	Bakery	Westfields Bakery	2,600.00	2,600.00	0.00
000030	Mfg Operations	Bakery	Westfields Bakery	8,900.00	8,900.00	0.00
000033	Mfg Operations	Bakery	Westfields Bakery	1,250.00	1,250.00	0.00
000042	Mfg Operations	Bakery	Westfields Bakery	129.50	129.50	0.00
000043	Mfg Operations	Bakery	Westfields Bakery	28,500.00	28,500.00	0.00
000044	Mfg Operations	Bakery	Westfields Bakery	7,740.00	7,740.00	0.00
000045	Mfg Operations	Bakery	Westfields Bakery	1,530.00	1,530.00	0.00
000046	Mfg Operations	Bakery	Westfields Bakery	450.00	307.50	142.50
000048	Mfg Operations	Bakery	Westfields Bakery	88.90	88.90	0.00
000049	Mfg Operations	Bakery	Westfields Bakery	225.00	225.00	0.00
000050	Mfg Operations	Bakery	Westfields Bakery	85.00	85.00	0.00

Sys No	Department	Location	Company Name	Acquisition Value	Current Accumulated	Netbook Value
000052	Mfg Operations	Bakery	Westfields Bakery	170.00	170.00	0.00
000053	Mfg Operations	Bakery	Westfields Bakery	60.00	60.00	0.00
000060	Mfg Operations	Bakery	Westfields Bakery	5,785.00	5,785.00	0.00
000064	Mfg Operations	Bakery	Westfields Bakery	297.00	297.00	0.00
000072	Mfg Operations	Store #1	Westfields Bakery	198.00	198.00	0.00
000076	Mfg Operations	Bakery	Westfields Bakery	34,025.00	34,025.00	0.00
000077	Mfg Operations	Bakery	Westfields Bakery	1,120.00	1,120.00	0.00
000080	Mfg Operations	Bakery	Westfields Bakery	2,250.00	2,250.00	0.00
000081	Mfg Operations	Bakery	Westfields Bakery	1,875.00	1,875.00	0.00
000082	Mfg Operations	Bakery	Westfields Bakery	42.50	0.00	42.50
000084	Mfg Operations	Bakery	Westfields Bakery	444.50	444.50	0.00
000085	Mfg Operations	Bakery	Westfields Bakery	5,850.00	5,850.00	0.00
000086	Mfg Operations	Bakery	Westfields Bakery	19,875.00	19,875.00	0.00
000087	Mfg Operations	Bakery	Westfields Bakery	1,000.00	1,000.00	0.00
000088	Mfg Operations	Bakery	Westfields Bakery	3,045.00	3,045.00	0.00
000089	Mfg Operations	Bakery	Westfields Bakery	5,300.00	5,300.00	0.00
000090	Mfg Operations	Bakery	Westfields Bakery	4,525.00	4,525.00	0.00
000091	Mfg Operations	Bakery	Westfields Bakery	1,600.00	1,600.00	0.00
000093	Mfg Operations	Bakery	Westfields Bakery	700.00	700.00	0.00
000094	Mfg Operations	Bakery	Westfields Bakery	4,500.00	4,500.00	0.00
000095	Mfg Operations	Bakery	Westfields Bakery	212.50	212.50	0.00
000096	Mfg Operations	Bakery	Westfields Bakery	250.00	250.00	0.00
000098	Mfg Operations	Bakery	Westfields Bakery	5,750.00	5,750.00	0.00
000106	Mfg Operations	Bakery	Westfields Bakery	840.00	840.00	0.00
000109	Mfg Operations	Bakery	Westfields Bakery	110,000.00	19,000.00	1,000.00
000110	Mfg Operations	Bakery	Westfields Bakery	22,000.00	0.00	0.00
000139	Mfg Operations	Bakery	Westfields Bakery	125,000.00	10,416.67	14,583.33
000140	Mfg Operations	Bakery	Westfields Bakery	2,175.46	1,849.13	326.33
000141	Mfg Operations	Store #1	Westfields Bakery	14,925.00	13,183.75	1,741.25
000142	Mfg Operations	Bakery	Westfields Bakery	1,092.00	1,092.00	0.00
000162	Mfg Operations	Bakery	Westfields Bakery	22,428.00	1,869.00	20,559.00
000163	Mfg Operations	Bakery	Westfields Bakery	3,045.75	228.43	2,817.32
000164	Mfg Operations	Bakery	Westfields Bakery	5,592.00	372.80	5,219.20
000166	Mfg Operations	Bakery	Westfields Bakery	48.75	0.00	48.75
000176	Mfg Operations	Bakery	Westfields Bakery	140,016.00	4,667.20	135,348.80
000180	Mfg Operations	Bakery	Westfields Bakery	250,000.00	8,333.33	241,666.67
000181	Mfg Operations	Bakery	Westfields Bakery	250,000.00	8,333.33	241,666.67
Total:	128			\$3,329,131.72	\$603,310.40	\$2,301,821.32

Retail Operations

Westfield						
000039	Retail Operations	Store #1	Westfield	375.00	375.00	0.00

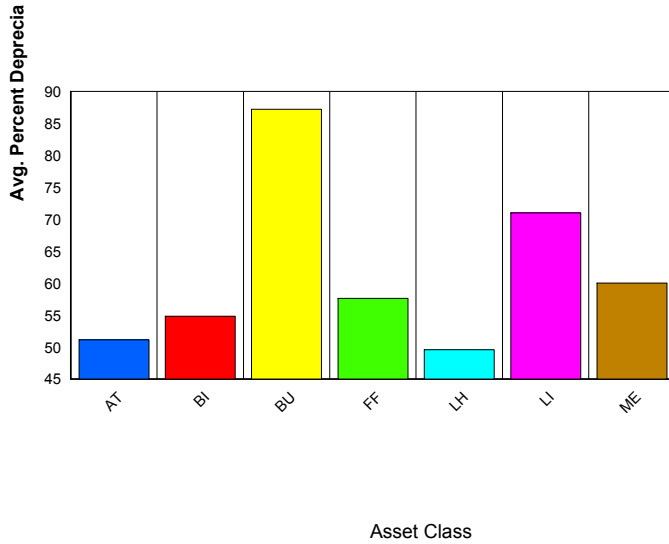
<u>Sys No</u>	<u>Department</u>	<u>Location</u>	<u>Company Name</u>	<u>Acquisition Value</u>	<u>Current Accumulated</u>	<u>Netbook Value</u>
000054	Retail Operations	Store #1	Westfield	4,840.00	4,840.00	0.00
000055	Retail Operations	Store #1	Westfield	2,200.00	2,200.00	0.00
000056	Retail Operations	Store #1	Westfield	2,750.88	2,750.88	0.00
000057	Retail Operations	Store #1	Westfield	5,248.00	5,248.00	0.00
000059	Retail Operations	Store #1	Westfield	606.00	606.00	0.00
000061	Retail Operations	Store #1	Westfield	119.00	119.00	0.00
000065	Retail Operations	Store #1	Westfield	3,500.00	3,500.00	0.00
000067	Retail Operations	Store #1	Westfield	500.00	500.00	0.00
000068	Retail Operations	Store #1	Westfield	795.00	795.00	0.00
000069	Retail Operations	Store #1	Westfield	5,950.00	5,950.00	0.00
000070	Retail Operations	Store #1	Westfield	880.00	880.00	0.00
000071	Retail Operations	Store #1	Westfield	1,141.98	1,141.98	0.00
000073	Retail Operations	Store #1	Westfield	495.00	495.00	0.00
000074	Retail Operations	Store #1	Westfield	1,175.00	1,175.00	0.00
000075	Retail Operations	Store #1	Westfield	1,510.00	1,510.00	0.00
000092	Retail Operations	Store #1	Westfield	1,143.00	1,143.00	0.00
000101	Retail Operations	Store #2	Westfield	535.00	263.04	271.96
000108	Retail Operations	Store #2	Westfield	2,624.00	2,536.53	87.47
000113	Retail Operations	Store #2	Westfield	6,350.00	5,715.00	635.00
000115	Retail Operations	Store #2	Westfield	606.00	545.40	60.60
000116	Retail Operations	Store #2	Westfield	2,420.00	2,137.67	282.33
000117	Retail Operations	Store #2	Westfield	1,760.00	1,554.67	205.33
000120	Retail Operations	Store #2	Westfield	5,724.00	4,960.80	763.20
000121	Retail Operations	Store #2	Westfield	24,750.50	21,450.43	3,300.07
000122	Retail Operations	Store #2	Westfield	15,000.00	0.00	0.00
000123	Retail Operations	Store #2	Westfield	880.00	762.67	117.33
000124	Retail Operations	Store #2	Westfield	1,240.00	1,074.67	165.33
000125	Retail Operations	Store #2	Westfield	1,175.00	1,018.33	156.67
000127	Retail Operations	Store #2	Westfield	380.66	329.90	50.76
000128	Retail Operations	Store #2	Westfield	495.00	214.50	280.50
000129	Retail Operations	Store #2	Westfield	1,200.00	1,040.00	160.00
000131	Retail Operations	Store #2	Westfield	762.00	647.70	114.30
000152	Retail Operations	Store #2	Westfield	650.00	173.33	476.67
000153	Retail Operations	Store #2	Westfield	785.00	170.08	614.92
000155	Retail Operations	Store #2	Westfield	886.00	168.76	717.24
000156	Retail Operations	Store #2	Westfield	210.00	56.00	154.00
000157	Retail Operations	Store #2	Westfield	250.00	66.67	183.33
000159	Retail Operations	Store #2	Westfield	381.00	95.25	285.75
000165	Retail Operations	Store #3	Westfield	2,717.00	181.13	2,535.87
000167	Retail Operations	Store #3	Westfield	6,357.38	423.83	5,933.55
000168	Retail Operations	Store #3	Westfield	19,550.00	1,303.33	18,246.67

<u>Sys No</u>	<u>Department</u>	<u>Location</u>	<u>Company Name</u>	<u>Acquisition Value</u>	<u>Current Accumulated</u>	<u>Netbook Value</u>
000169	Retail Operations	Store #3	Westfield	3,999.80	233.32	3,766.48
000170	Retail Operations	Store #3	Westfield	5,215.20	304.22	4,910.98
000171	Retail Operations	Store #3	Westfield	12,400.00	723.33	11,676.67
000172	Retail Operations	Store #3	Westfield	5,998.61	299.93	5,698.68
000173	Retail Operations	Store #3	Westfield	14,500.00	151.04	14,348.96
000174	Retail Operations	Store #3	Westfield	575.00	91.04	483.96
000175	Retail Operations	Store #3	Westfield	32,000.00	2,133.33	29,866.67
000178	Retail Operations	Store #3	Westfield	3,096.72	77.42	3,019.30
000179	Retail Operations	Store #2	Westfield	19,550.00	162.92	19,387.08
Westfields Bakery						
000039	Retail Operations	Store #1	Westfields Bakery	375.00	375.00	0.00
000054	Retail Operations	Store #1	Westfields Bakery	4,840.00	4,840.00	0.00
000055	Retail Operations	Store #1	Westfields Bakery	2,200.00	2,200.00	0.00
000056	Retail Operations	Store #1	Westfields Bakery	2,750.88	2,750.88	0.00
000057	Retail Operations	Store #1	Westfields Bakery	5,248.00	5,248.00	0.00
000059	Retail Operations	Store #1	Westfields Bakery	606.00	606.00	0.00
000061	Retail Operations	Store #1	Westfields Bakery	119.00	119.00	0.00
000065	Retail Operations	Store #1	Westfields Bakery	3,500.00	3,500.00	0.00
000067	Retail Operations	Store #1	Westfields Bakery	500.00	500.00	0.00
000068	Retail Operations	Store #1	Westfields Bakery	795.00	795.00	0.00
000069	Retail Operations	Store #1	Westfields Bakery	5,950.00	5,950.00	0.00
000070	Retail Operations	Store #1	Westfields Bakery	880.00	880.00	0.00
000071	Retail Operations	Store #1	Westfields Bakery	1,141.98	1,141.98	0.00
000073	Retail Operations	Store #1	Westfields Bakery	495.00	495.00	0.00
000074	Retail Operations	Store #1	Westfields Bakery	1,175.00	1,175.00	0.00
000075	Retail Operations	Store #1	Westfields Bakery	1,510.00	1,510.00	0.00
000092	Retail Operations	Store #1	Westfields Bakery	1,143.00	1,143.00	0.00
000101	Retail Operations	Store #2	Westfields Bakery	535.00	263.04	271.96
000108	Retail Operations	Store #2	Westfields Bakery	2,624.00	2,536.53	87.47
000113	Retail Operations	Store #2	Westfields Bakery	6,350.00	5,715.00	635.00
000115	Retail Operations	Store #2	Westfields Bakery	606.00	545.40	60.60
000116	Retail Operations	Store #2	Westfields Bakery	2,420.00	2,137.67	282.33
000117	Retail Operations	Store #2	Westfields Bakery	1,760.00	1,554.67	205.33
000120	Retail Operations	Store #2	Westfields Bakery	5,724.00	4,960.80	763.20
000121	Retail Operations	Store #2	Westfields Bakery	24,750.50	21,450.43	3,300.07
000122	Retail Operations	Store #2	Westfields Bakery	15,000.00	0.00	0.00
000123	Retail Operations	Store #2	Westfields Bakery	880.00	762.67	117.33
000124	Retail Operations	Store #2	Westfields Bakery	1,240.00	1,074.67	165.33
000125	Retail Operations	Store #2	Westfields Bakery	1,175.00	1,018.33	156.67
000127	Retail Operations	Store #2	Westfields Bakery	380.66	329.90	50.76
000128	Retail Operations	Store #2	Westfields Bakery	495.00	214.50	280.50

Sys No	Department	Location	Company Name	Acquisition Value	Current Accumulated	Netbook Value
000129	Retail Operations	Store #2	Westfields Bakery	1,200.00	1,040.00	160.00
000131	Retail Operations	Store #2	Westfields Bakery	762.00	647.70	114.30
000152	Retail Operations	Store #2	Westfields Bakery	650.00	173.33	476.67
000153	Retail Operations	Store #2	Westfields Bakery	785.00	170.08	614.92
000155	Retail Operations	Store #2	Westfields Bakery	886.00	168.76	717.24
000156	Retail Operations	Store #2	Westfields Bakery	100.00	50.00	50.00
000156	Retail Operations	Store #2	Westfields Bakery	110.00	29.33	80.67
000157	Retail Operations	Store #2	Westfields Bakery	250.00	125.00	125.00
000157	Retail Operations	Store #2	Westfields Bakery	150.00	75.00	75.00
000159	Retail Operations	Store #2	Westfields Bakery	381.00	95.25	285.75
000165	Retail Operations	Store #3	Westfields Bakery	2,717.00	181.13	2,535.87
000167	Retail Operations	Store #3	Westfields Bakery	6,357.38	423.83	5,933.55
000168	Retail Operations	Store #3	Westfields Bakery	19,550.00	1,303.33	18,246.67
000169	Retail Operations	Store #3	Westfields Bakery	3,999.80	233.32	3,766.48
000170	Retail Operations	Store #3	Westfields Bakery	5,215.20	304.22	4,910.98
000171	Retail Operations	Store #3	Westfields Bakery	12,400.00	723.33	11,676.67
000172	Retail Operations	Store #3	Westfields Bakery	5,998.61	299.93	5,698.68
000173	Retail Operations	Store #3	Westfields Bakery	14,500.00	151.04	14,348.96
000174	Retail Operations	Store #3	Westfields Bakery	575.00	23.96	551.04
000175	Retail Operations	Store #3	Westfields Bakery	32,000.00	9,599.99	22,400.01
000178	Retail Operations	Store #3	Westfields Bakery	3,096.72	77.42	3,019.30
000179	Retail Operations	Store #2	Westfields Bakery	19,550.00	162.92	19,387.08
000195	Retail Operations	Store #1	Westfields Bakery	100.00	50.00	50.00
000196	Retail Operations	Store #3	Westfields Bakery	32,000.00	9,599.99	22,400.01
000197	Retail Operations	Store #3	Westfields Bakery	12,400.00	723.33	11,676.67
000198	Retail Operations	Store #3	Westfields Bakery	12,400.00	723.33	11,676.67
000199	Retail Operations	Store #3	Westfields Bakery	12,400.00	723.33	11,676.67
000200	Retail Operations	Store #3	Westfields Bakery	12,400.00	723.33	11,676.67
000201	Retail Operations	Store #3	Westfields Bakery	12,400.00	723.33	11,676.67
000209	Retail Operations	Store #3	Westfields Bakery	12,400.00	723.33	11,676.67
000210	Retail Operations	Store #3	Westfields Bakery	12,400.00	723.33	11,676.67
000211	Retail Operations	Store #3	Westfields Bakery	12,400.00	723.33	11,676.67
000212	Retail Operations	Store #3	Westfields Bakery	12,400.00	723.33	11,676.67
000213	Retail Operations	Store #3	Westfields Bakery	12,400.00	723.33	11,676.67
Total:	116			<u>\$612,755.46</u>	<u>\$193,029.73</u>	<u>\$389,725.73</u>
Grand Total:				<u>\$9,386,428.24</u>	<u>\$2,610,010.21</u>	<u>\$6,322,418.03</u>

Westfield

ASSET AGING



AT = Automobiles
 BD = Buildings
 BU = Bakery Utensils
 BI = Building Improvements
 CE = Computers
 FF = Furniture and Fixtures
 LH = Leasehold Improvements
 LI = Land Improvements
 ME = Machinery and Equipment

<u>System No</u>	<u>Current Net Book Value</u>	<u>Percent Depreciated</u>	<u>Thru Date</u>	<u>Remaining Life</u>	<u>Acquisition Value</u>	<u>Estimated Replacement Amount</u>
AT						
175	29,866.67	6.67	12/31/2008	4.67	32,000.00	35,200.00
151	38,250.00	15.00	12/31/2008	8.50	45,000.00	49,500.00
147	33,332.50	16.67	12/31/2008	8.33	39,999.00	43,998.90
143	6,965.47	86.67	12/31/2008	0.67	52,241.00	57,465.10
132	5,307.50	81.67	12/31/2008	0.92	28,950.00	31,845.00
40	0.00	100.00	12/31/2008	0.00	24,505.00	26,955.50
Count =	6					
Class AT	Subtotal	113,722.14			222,695.00	244,964.50
	Average	18,953.69	51.11 %	3.85 yrs.	37,115.83	40,827.42
BI						
177	770.16	0.62	12/31/2008	39.75	775.00	852.50
161	2,117.50	3.75	12/31/2008	38.50	2,200.00	2,420.00
133	3,538.78	35.00	12/31/2008	6.50	5,444.28	5,988.71
118	251.25	44.17	12/31/2008	5.58	450.00	495.00
83	1,052.08	58.33	12/31/2008	4.17	2,525.00	2,777.50
63	0.00	100.00	12/31/2008	0.00	275.00	302.50
58	153.75	65.83	12/31/2008	3.42	450.00	495.00
51	1,600.00	66.67	12/31/2008	3.33	4,800.00	5,280.00
47	390.00	67.50	12/31/2008	3.25	1,200.00	1,320.00

<u>System No</u>	<u>Current Net Book Value</u>	<u>Percent Depreciated</u>	<u>Thru Date</u>	<u>Remaining Life</u>	<u>Acquisition Value</u>	<u>Estimated Replacement Amount</u>
46	142.50	68.33	12/31/2008	3.17	450.00	495.00
41	1,162.50	70.00	12/31/2008	3.00	3,875.00	4,262.50
38	3,689.58	70.83	12/31/2008	2.92	12,650.00	13,915.00
36	63.75	71.67	12/31/2008	2.83	225.00	247.50
35	113.33	71.67	12/31/2008	2.83	400.00	440.00
34	220.00	72.50	12/31/2008	2.75	800.00	880.00
32	2,976.62	36.67	12/31/2008	12.67	4,699.95	5,169.95
18	2,490.42	42.08	12/31/2008	11.58	4,300.00	4,730.00
17	3,920.97	40.83	12/31/2008	11.83	6,627.00	7,289.70
Count = 18						
Class	BI	Subtotal				
		24,653.19			52,146.23	57,360.85
		Average				
		1,369.62	54.80	%	8.78 yrs.	2,897.01
BU						
210	0.00	100.00	12/31/2008	0.00	1,795.00	1,974.50
209	0.00	100.00	12/31/2008	0.00	1,795.00	1,974.50
166	48.75	0.00		0.00	48.75	53.63
164	5,219.20	6.67	12/31/2008	9.33	5,592.00	6,151.20
106	0.00	100.00	12/31/2008	0.00	840.00	924.00
98	0.00	100.00	12/31/2008	0.00	5,750.00	6,325.00
96	0.00	100.00	12/31/2008	0.00	250.00	275.00
95	0.00	100.00	12/31/2008	0.00	212.50	233.75
93	0.00	100.00	12/31/2008	0.00	700.00	770.00
91	0.00	100.00	12/31/2008	0.00	1,600.00	1,760.00
84	0.00	100.00	12/31/2008	0.00	444.50	488.95
82	42.50	0.00		0.00	42.50	46.75
64	0.00	100.00	12/31/2008	0.00	297.00	326.70
53	0.00	100.00	12/31/2008	0.00	60.00	66.00
52	0.00	100.00	12/31/2008	0.00	170.00	187.00
50	0.00	100.00	12/31/2008	0.00	85.00	93.50
49	0.00	100.00	12/31/2008	0.00	225.00	247.50
48	0.00	100.00	12/31/2008	0.00	88.90	97.79
45	0.00	100.00	12/31/2008	0.00	1,530.00	1,683.00
42	0.00	100.00	12/31/2008	0.00	129.50	142.45
27	0.00	100.00	12/31/2008	0.00	1,795.00	1,974.50
6	0.00	100.00	12/31/2008	0.00	424.00	466.40
4	0.00	100.00	12/31/2008	0.00	2,075.00	2,282.50

	<u>System No</u>	<u>Current Net Book Value</u>	<u>Percent Depreciated</u>	<u>Thru Date</u>	<u>Remaining Life</u>	<u>Acquisition Value</u>	<u>Estimated Replacement Amount</u>
Count =	23						
Class	BU	Subtotal					
		5,310.45				25,949.65	28,544.62
		Average	230.89	87.25 %	0.41 yrs.	1,128.25	1,241.07
FF							
	208	10,000.00	0.00		0.00	10,000.00	11,000.00
	207	0.00	100.00	12/31/2008	0.00	179.00	196.90
	206	0.00	100.00	12/31/2008	0.00	179.00	196.90
	201	0.00	0.00		0.00	0.00	0.00
	194	0.00	0.00		0.00	0.00	0.00
	193	0.00	0.00		0.00	0.00	0.00
	192	0.00	0.00		0.00	0.00	0.00
	191	0.00	0.00		0.00	0.00	0.00
	190	0.00	0.00		0.00	0.00	0.00
	189	0.00	0.00		0.00	0.00	0.00
	188	600.00	0.00		0.00	600.00	660.00
	187	0.00	0.00		0.00	0.00	0.00
	183	0.00	0.00		0.00	0.00	0.00
	171	11,676.67	5.83	12/31/2008	9.42	12,400.00	13,640.00
	170	4,910.98	5.83	12/31/2008	9.42	5,215.20	5,736.72
	169	3,766.48	5.83	12/31/2008	9.42	3,999.80	4,399.78
	159	285.75	25.00	12/31/2008	3.75	381.00	419.10
	158	97.50	25.00	12/31/2008	3.75	130.00	143.00
	157	183.33	26.67	12/31/2008	3.67	250.00	275.00
	154	2,024.00	26.67	12/31/2008	3.67	2,760.00	3,036.00
	142	0.00	100.00	12/31/2008	0.00	1,092.00	1,201.20
	131	114.30	85.00	12/31/2008	0.75	762.00	838.20
	129	160.00	86.67	12/31/2008	0.67	1,200.00	1,320.00
	126	48.00	86.67	12/31/2008	0.67	360.00	396.00
	122	0.00	0.00	12/31/2008	0.67	15,000.00	16,500.00
	119	37.92	88.33	12/31/2008	0.58	325.00	357.50
	117	205.33	88.33	12/31/2008	0.58	1,760.00	1,936.00
	116	282.33	88.33	12/31/2008	0.58	2,420.00	2,662.00
	115	60.60	90.00	12/31/2008	0.50	606.00	666.60
	108	87.47	96.67	12/31/2008	0.17	2,624.00	2,886.40
	92	0.00	100.00	12/31/2008	0.00	1,143.00	1,257.30
	79	1,460.00	60.00	12/31/2008	4.00	3,650.00	4,015.00
	78	480.00	60.00	12/31/2008	4.00	1,200.00	1,320.00

<u>System No</u>	<u>Current Net Book Value</u>	<u>Percent Depreciated</u>	<u>Thru Date</u>	<u>Remaining Life</u>	<u>Acquisition Value</u>	<u>Estimated Replacement Amount</u>
67	0.00	100.00	12/31/2008	0.00	500.00	550.00
65	0.00	100.00	12/31/2008	0.00	3,500.00	3,850.00
62	0.00	100.00	12/31/2008	0.00	540.00	594.00
61	0.00	100.00	12/31/2008	0.00	119.00	130.90
59	0.00	100.00	12/31/2008	0.00	606.00	666.60
57	0.00	100.00	12/31/2008	0.00	5,248.00	5,772.80
56	0.00	100.00	12/31/2008	0.00	2,750.88	3,025.97
55	0.00	100.00	12/31/2008	0.00	2,200.00	2,420.00
54	0.00	100.00	12/31/2008	0.00	4,840.00	5,324.00
25	0.00	100.00	12/31/2008	0.00	99.00	108.90
23	0.00	100.00	12/31/2008	0.00	1,129.00	1,241.90
21	0.00	100.00	12/31/2008	0.00	399.00	438.90
20	0.00	100.00	12/31/2008	0.00	179.00	196.90

Count = 46

Class	FF	Subtotal	36,480.66			90,345.88	99,380.47
		Average	793.06	57.63	%	1.22 yrs.	2,160.44

LH

173	14,348.96	1.04	12/31/2008	39.58	14,500.00	15,950.00
130	41.25	85.00	12/31/2008	0.75	275.00	302.50
114	965.50	45.00	12/31/2008	5.50	1,755.43	1,930.97
112	2,640.00	45.00	12/31/2008	5.50	4,800.00	5,280.00
111	1,485.00	45.00	12/31/2008	5.50	2,700.00	2,970.00
107	3,203.33	48.33	12/31/2008	5.17	6,200.00	6,820.00
104	1,494.50	49.17	12/31/2008	5.08	2,940.00	3,234.00
103	1,931.67	49.17	12/31/2008	5.08	3,800.00	4,180.00
102	2,262.50	24.58	12/31/2008	15.08	3,000.00	3,300.00
101	271.96	49.17	12/31/2008	5.08	535.00	588.50
100	68.62	49.17	12/31/2008	5.08	135.00	148.50
99	139.79	49.17	12/31/2008	5.08	275.00	302.50
31	781.50	75.00	12/31/2008	2.50	3,126.00	3,438.60
24	2,500.00	79.17	12/31/2008	2.08	12,000.00	13,200.00

Count = 14

Class	LH	Subtotal	32,134.58			56,041.43	61,645.57
		Average	2,295.33	49.57	%	7.65 yrs.	4,403.26

LI

						<u>Estimated</u>
<u>System No</u>	<u>Current</u> <u>Net Book Value</u>	<u>Percent</u> <u>Depreciated</u>	<u>Thru</u> <u>Date</u>	<u>Remaining</u> <u>Life</u>	<u>Acquisition</u> <u>Value</u>	<u>Replacement</u> <u>Amount</u>
66	2,713.33	63.33	12/31/2008	3.67	7,400.00	8,140.00
15	469.58	80.83	12/31/2008	1.92	2,450.00	2,695.00
14	957.00	81.67	12/31/2008	1.83	5,220.00	5,742.00
13	2,931.25	82.50	12/31/2008	1.75	16,750.00	18,425.00
3	1,178.67	46.67	12/31/2008	10.67	2,210.00	2,431.00
Count =	5					
Class	LI	Subtotal				
		8,249.83			34,030.00	37,433.00
		Average				
		1,649.97	71.00	%	3.97 yrs.	6,806.00
ME						
205	241,666.67	3.33	12/31/2008	9.67	250,000.00	275,000.00
204	241,666.67	3.33	12/31/2008	9.67	250,000.00	275,000.00
203	241,666.67	3.33	12/31/2008	9.67	250,000.00	275,000.00
202	241,666.67	3.33	12/31/2008	9.67	250,000.00	275,000.00
199	30,000.00	0.00		0.00	30,000.00	33,000.00
198	1,000.00	0.00		0.00	1,000.00	1,100.00
197	1,000.00	0.00		0.00	1,000.00	1,100.00
196	1,000.00	0.00		0.00	1,000.00	1,100.00
181	241,666.67	3.33	12/31/2008	9.67	250,000.00	275,000.00
180	241,666.67	3.33	12/31/2008	9.67	250,000.00	275,000.00
179	19,387.08	0.83	12/31/2008	9.92	19,550.00	21,505.00
178	3,019.30	2.50	12/31/2008	9.75	3,096.72	3,406.39
176	135,348.80	3.33	12/31/2008	9.67	140,016.00	154,017.60
172	5,698.68	5.00	12/31/2008	9.50	5,998.61	6,598.47
168	18,246.67	6.67	12/31/2008	9.33	19,550.00	21,505.00
167	5,933.55	6.67	12/31/2008	9.33	6,357.38	6,993.12
165	2,535.87	6.67	12/31/2008	9.33	2,717.00	2,988.70
163	2,817.32	7.50	12/31/2008	9.25	3,045.75	3,350.33
162	20,559.00	8.33	12/31/2008	9.17	22,428.00	24,670.80
160	30,256.25	21.67	12/31/2008	3.92	38,625.00	42,487.50
156	154.00	26.67	12/31/2008	3.67	210.00	231.00
155	717.24	19.05	12/31/2008	5.67	886.00	974.60
152	476.67	26.67	12/31/2008	3.67	650.00	715.00
150	27,774.16	15.83	12/31/2008	8.42	32,999.00	36,298.90
149	1,875.00	16.67	12/31/2008	8.33	2,250.00	2,475.00
148	4,583.33	16.67	12/31/2008	8.33	5,500.00	6,050.00
141	1,741.25	88.33	12/31/2008	0.58	14,925.00	16,417.50
140	326.33	85.00	12/31/2008	0.75	2,175.46	2,393.01

<u>System No</u>	<u>Current Net Book Value</u>	<u>Percent Depreciated</u>	<u>Thru Date</u>	<u>Remaining Life</u>	<u>Acquisition Value</u>	<u>Estimated Replacement Amount</u>
139	14,583.33	8.33	12/31/2008	5.83	125,000.00	137,500.00
128	280.50	43.33	12/31/2008	5.67	495.00	544.50
127	50.76	86.67	12/31/2008	0.67	380.66	418.73
125	156.67	86.67	12/31/2008	0.67	1,175.00	1,292.50
124	165.33	86.67	12/31/2008	0.67	1,240.00	1,364.00
123	117.33	86.67	12/31/2008	0.67	880.00	968.00
121	3,300.07	86.67	12/31/2008	0.67	24,750.50	27,225.55
120	763.20	86.67	12/31/2008	0.67	5,724.00	6,296.40
113	635.00	90.00	12/31/2008	0.50	6,350.00	6,985.00
110	0.00	0.00	12/31/2008	0.25	22,000.00	24,200.00
109	1,000.00	17.27	12/31/2008	0.25	110,000.00	121,000.00
105	6.25	98.33	12/31/2008	0.08	375.00	412.50
94	0.00	100.00	12/31/2008	0.00	4,500.00	4,950.00
90	0.00	100.00	12/31/2008	0.00	4,525.00	4,977.50
89	0.00	100.00	12/31/2008	0.00	5,300.00	5,830.00
88	0.00	100.00	12/31/2008	0.00	3,045.00	3,349.50
87	0.00	100.00	12/31/2008	0.00	1,000.00	1,100.00
86	0.00	100.00	12/31/2008	0.00	19,875.00	21,862.50
85	0.00	100.00	12/31/2008	0.00	5,850.00	6,435.00
81	0.00	100.00	12/31/2008	0.00	1,875.00	2,062.50
80	0.00	100.00	12/31/2008	0.00	2,250.00	2,475.00
77	0.00	100.00	12/31/2008	0.00	1,120.00	1,232.00
76	0.00	100.00	12/31/2008	0.00	34,025.00	37,427.50
75	0.00	100.00	12/31/2008	0.00	1,510.00	1,661.00
74	0.00	100.00	12/31/2008	0.00	1,175.00	1,292.50
73	0.00	100.00	12/31/2008	0.00	495.00	544.50
72	0.00	100.00	12/31/2008	0.00	198.00	217.80
71	0.00	100.00	12/31/2008	0.00	1,141.98	1,256.18
70	0.00	100.00	12/31/2008	0.00	880.00	968.00
69	0.00	100.00	12/31/2008	0.00	5,950.00	6,545.00
68	0.00	100.00	12/31/2008	0.00	795.00	874.50
60	0.00	100.00	12/31/2008	0.00	5,785.00	6,363.50
44	0.00	100.00	12/31/2008	0.00	7,740.00	8,514.00
43	0.00	100.00	12/31/2008	0.00	28,500.00	31,350.00
39	0.00	100.00	12/31/2008	0.00	375.00	412.50
33	0.00	100.00	12/31/2008	0.00	1,250.00	1,375.00
28	0.00	100.00	12/31/2008	0.00	2,600.00	2,860.00
26	0.00	100.00	12/31/2008	0.00	2,450.00	2,695.00

		<u>Current</u>	<u>Percent</u>	<u>Thru</u>	<u>Remaining</u>	<u>Acquisition</u>	<u>Estimated</u>
	<u>System No</u>	<u>Net Book Value</u>	<u>Depreciated</u>	<u>Date</u>	<u>Life</u>	<u>Value</u>	<u>Replacement</u>
							<u>Amount</u>
	10	0.00	100.00	12/31/2008	0.00	2,450.00	2,695.00
	9	0.00	100.00	12/31/2008	0.00	3,250.00	3,575.00
	8	0.00	100.00	12/31/2008	0.00	1,475.00	1,622.50
	7	0.00	100.00	12/31/2008	0.00	34,500.00	37,950.00
	5	0.00	100.00	12/31/2008	0.00	4,650.00	5,115.00
Count =	71						
Class	ME	Subtotal					
		1,785,508.96				2,342,885.06	2,577,173.57
		Average	25,148.01	60.02 %		2.86 yrs.	32,998.38
							36,298.22
<hr/>							
	Grand Total:	2,006,059.81				2,824,093.25	3,106,502.58
		Average:	25,148.01	61.54 %		3.15 yrs.	
Count =	183.00						