



The
Designed
Exterior
by Ply Gem™

REMODELING FIELD GUIDE

VARIFORM®
by PLY GEM

DESIGNED
TO **INSPIRE.**



Whether the reasons are functional or aesthetic, making updates to your existing home exterior is inevitable. Through *The Designed Exterior™* by Ply Gem, you can beautifully transform the look of your house with low-maintenance materials that will allow you to spend time enjoying your home instead of fixing it.



MONTICELLO • PLY GEM SHUTTERS AND ACCENTS • PLY GEM STONE • PLY GEM WINDOWS • PLY GEM FENCE AND RAILING • PLY GEM TRIM AND MOULDINGS

DESIGNED TO WORK TOGETHER.

Our **Products.**

- Windows and Doors
- Siding, Soffit and Accessories
- Stone and Brick Veneer
- Trim and Moulding
- Designer Accents
- Fence and Rail
- Roofing
- Gutters and Gutter Protection



The image is a collage of various exterior building materials and fixtures. At the top left, there is a section of rough-hewn stone. Below it is a window with a dark wood frame and white vertical blinds. To the right of the window is a white decorative finial. Further right is a brown scalloped awning. Below the awning is a blue shutter. In the center, there is a white decorative pediment with a finial. To the left of the pediment is a black-framed window with a grid pattern. Below the black window is a red shingled roof section. To the right of the red roof is a dark teal vertical panel. Below the teal panel is a white decorative pillar. At the bottom center is a dark wood double door with a grid pattern. To the right of the door is a white arched louvered vent. Below the vent is a stone wall. At the bottom right is a white decorative pillar. The background is a light gray wall.

For more than 70 years, professionals and homeowners alike have trusted Ply Gem as a leading building products manufacturer. Continuing that legacy, we partnered with one of the nation's foremost national architectural firms to develop *The Designed Exterior™* by Ply Gem. Product combinations and color palettes have been carefully conceived to bring each style to life. The result is a complete exterior solution that's cost-effective to build and beautiful to behold — backed by a single company that's been serving the building industry for generations.

Whether you've just bought a house or it's been yours for decades, it may be time to rethink or replace the exterior. With *The Designed Exterior™* by Ply Gem, you can turn a house into a home. All of the materials are designed to work together for a coordinated look. One that fills you with pride and creates a welcome impression with friends and neighbors.

Still unsure if it's truly possible to transform an outdated house into one that's fresh and innovative? Check out how we helped transform a forgettable 1970s two-story into the envy of the neighborhood — in less than a month.

The Designed Exterior™ is a complete exterior solution that enables you to create a look that reflects your personal style.



Scan this code with your QR Reader to get more details about *The Designed Exterior™*.

VARIFORM®
by PLY GEM

From outdated to outstanding

This Colonial-style home had seen better days. Even if much-needed repairs were made, the owners would be left with a boring, box-shaped house. What they wanted was a home with character and personality.

Design inspiration came from the gable over the garage.

- Gables were added over the front door and roofline to break up the boxy shape and bring harmony to the exterior.
- Shingle siding and stone combine to add rustic texture and complement the roofing shingles.
- Half-colonial grille patterns in the windows are true to the new Shingle-style design.
- Cream trim, windows and garage doors highlight architectural features.
- Red shutters, front door and gable vent add personality to the palette.



Shadow Ledge stone and shingle siding coordinate texture and color beautifully. A warm red accents the natural earthtones.

DAY 1

DAY 3

DAY 6

DAY 8

DAY 10



THE DESIGNED EXTERIOR



"It was very important to my wife and I that the style of our home be coordinated – with colors, materials and textures chosen for a purpose. Thanks to *The Designed Exterior™*, we were able to select a new exterior for our home and preview how it would look before work even started. The result is just beautiful."

- Gary Gaal, Alexandria, VA



Welcoming Change

DAY 12

DAY 15

DAY 18

DAY 20

DAY 21



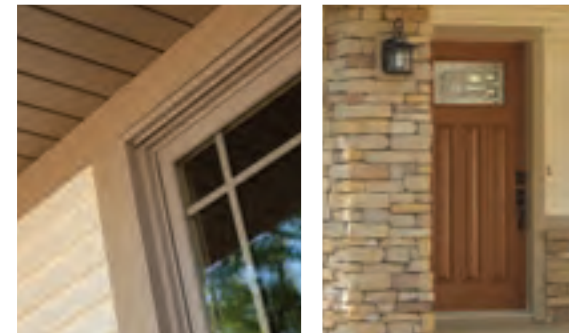
From eyesore to eye-catching

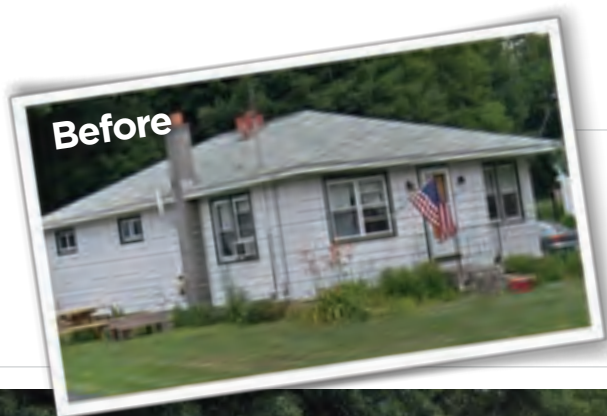


This sad Ranch home was a maintenance headache but it had features you could build on. Overhanging eaves and a hip roof garage suggested a Prairie-style makeover. A band of stone topped with trim emphasizes the horizontal style. Stone pillars and contrasting earthtones coordinate beautifully. The owners couldn't be happier with the result.



Texture, color and architectural details like the Prairie pattern window grilles combine a charming effect.





From homely to houseproud

This much-loved home had fallen into disrepair. So much so that the owners were embarrassed by the exterior appearance. A Craftsman-style remodel restored their pride. The new porch with tapered pillars and stone columns extends an inviting welcome. Rustic textures and earthtones work together to create a handcrafted look. Now friends and neighbors can't stop singing its praises.



Rustic textures and contrasting colors make this Craftsman-style bungalow a standout.



REALIZING YOUR DREAM.

You've been visualizing it for years. Now that you're ready, the question is: **where to begin?**

HOW TO USE THIS FIELD GUIDE

The Designed Exterior™ will help you create the look you've been hoping for.

START by selecting a "before" home — one similar to your own. There's sure to be a ranch-style, split-level or two-story house that you can relate to.



REFRESH REMODEL

NEXT, check out how you can upgrade the look of your house by simply resurfacing it with a mix of styles, textures and materials. For instance, new windows are a major architectural feature that will add distinctive character and provide increased comfort and savings — while shutters, trim and accessories add personality and charm.



ENHANCE REMODEL



CONSIDER THIS. Perhaps it's time to give your home a dramatic facelift. Think about adding purely cosmetic modifications such as a dormer, gable or front porch. These straightforward design elements make it possible to completely transform the overall house look into a classic architectural gem.

THE COLLECTIONS

The right mix of textures, colors and architectural details can fashion a harmonious design.

Throughout this Field Guide we've identified color and material combinations — created by architects — that coordinate beautifully and form each Designed Exterior. Use them to guide your design choices. Yet, feel free to mix and match homes and collections to transform the look of your existing house.





The Designed Exterior[™] by Ply Gem

This Field Guide showcases a range of traditional and contemporary exterior design styles. The looks were selected in partnership with a leading national architectural firm and represent today's most popular exteriors. Product specifications and recommended color schemes are provided for each architectural style. Use them to guide your design choices, achieve an authentic look and give your home greater curb appeal.



SINGLE-STORY HOMES

PAGES 14-31



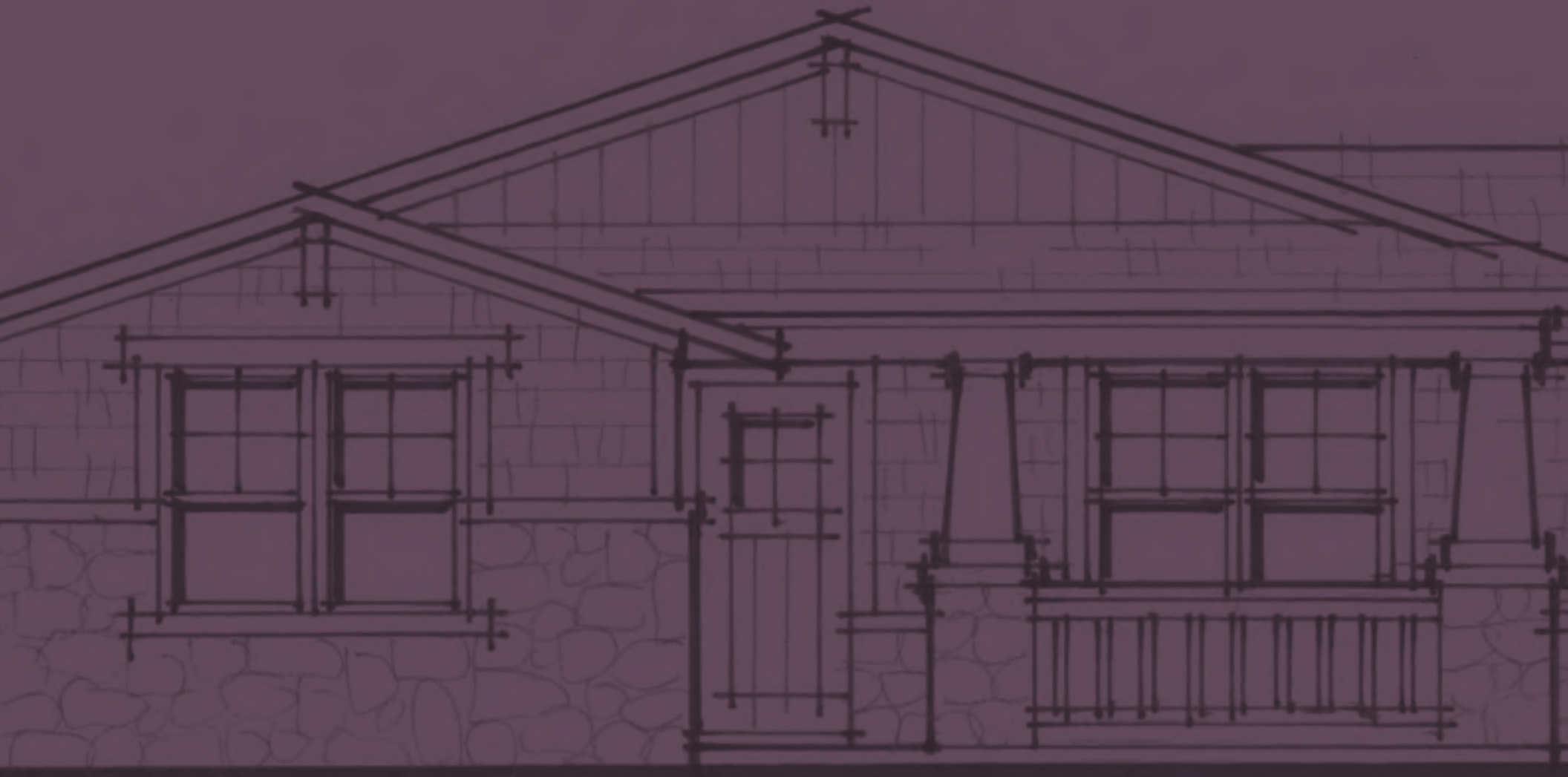
SPLIT-LEVEL HOMES

PAGES 32-45



TWO-STORY HOMES

PAGES 46-63



SINGLE-STORY — HOMES —

Single-story houses, or more commonly referred to as ranch-style houses, are widely preferred by homeowners because of their ease of accessibility. Unfortunately, it's all too common that these houses lack individuality and character.

However, *The Designed Exterior™* by Ply Gem helps to inspire beautifully updated, low-maintenance home exteriors by combining windows, stone veneer, siding profiles and colors, along with other accents that are intended to give any home a fresh and dramatically customized look.

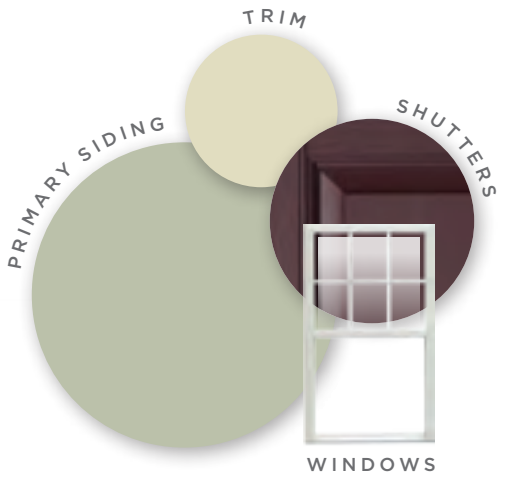


This simple, Cape Cod cottage-style home has good proportions but is short on detail — the windows lack grids, its shutters are under-sized and its porch columns are too thin.

Adding color — inspired by the architecture itself — makes a dramatic impact. Right-sized shutters, the updated six-over-one window pattern and new, more substantial porch columns deliver an exceptional look.

The FERN

COLLECTION



REFRESH



ENHANCE

A mix of colors and textures completely transform this once forgettable-looking home into an enviable Craftsman. Single windows with shutters were replaced by double windows with an authentic three-over-one grille pattern. The addition of stone columns, along with a railing application, creates a stylish front porch.

The **HILLTOP**
COLLECTION



Refer to the inside back cover for product specs.

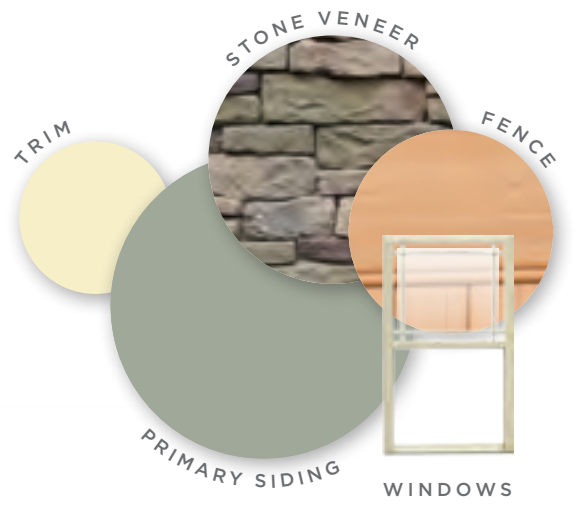
This typical Midwestern house lacks fine points and could be considered a watered-down Prairie style. Its windows are ordinary, colors are dull and the entryway is especially weak.



This home's existing style received a boost by updating the color and texture. Its plain windows were exchanged with a Prairie window pattern in the upper sash, the existing brick was replaced with Shadow Ledgestone and the small front porch was strengthened by adding a column.

The RIVERSTONE

COLLECTION



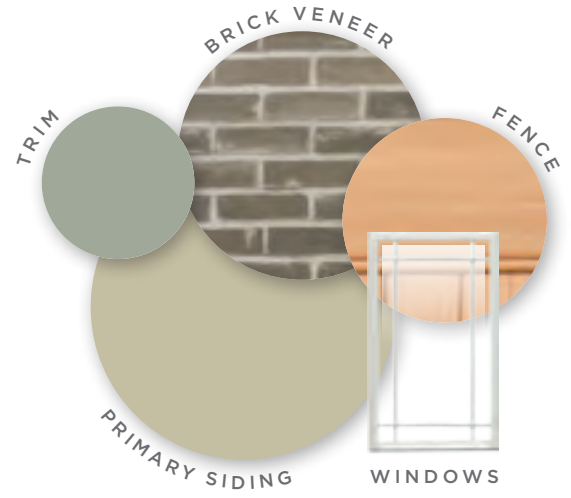


ENHANCE

The improved version of this Prairie-style home includes strong horizontal lines paired with clusters of casement windows. A front porch with massive square piers was added to give the house a bold entrance.

The UNIVERSITY

COLLECTION



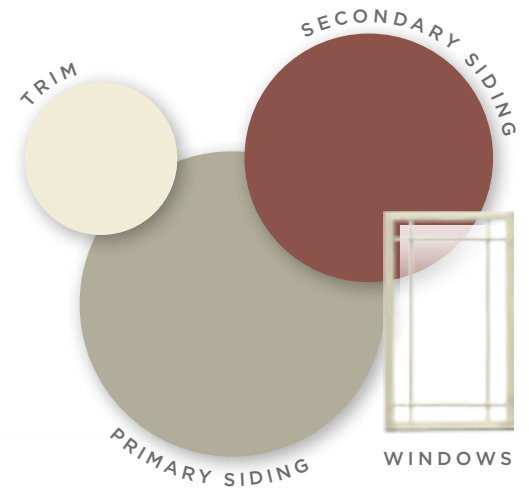
Refer to the inside back cover for product specs.

This home displays some typical architectural missteps. Shutters should be sized to function — in other words, be able to close over the entire window. Picture and corner windows were never intended to have shutters. Often times this was an attempt to add animation and color to an otherwise plain house.



In order to bring visual interest to this home, two different siding colors were chosen. The siding on the lower portion of the home is darker and wider — a technique referred to as “rusticated.” In addition, double-hung windows were replaced by casements with the Prairie grille pattern.

The **SANTA FE**
COLLECTION



REFRESH



ENHANCE

This house lacked the celebration of entry. A front porch and roof gable were added, delivering the Craftsman style, which pairs well with the existing low-pitched roof and completely changes the appearance of the home. By altering window styles and placement, varying siding materials — shakes and Board-and-Batten and adding columned piers along with stone at the base — this home now appears architecturally authentic.

The REED

COLLECTION



Refer to the inside back cover for product specs.

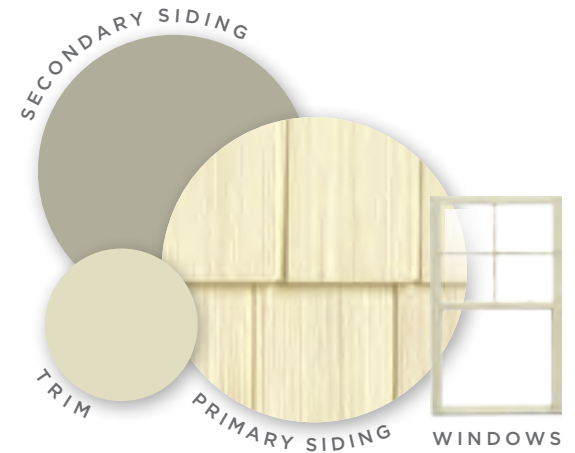
This house is a textbook example of what commonly happens when a homeowner chooses to convert a garage into living space.



By simply using a mix of siding styles and employing trim work throughout the design, this home now has a fresh, cohesive look. A new four-over-one window pattern also adds character and style to this once sparse-looking house.

The STRAW

COLLECTION



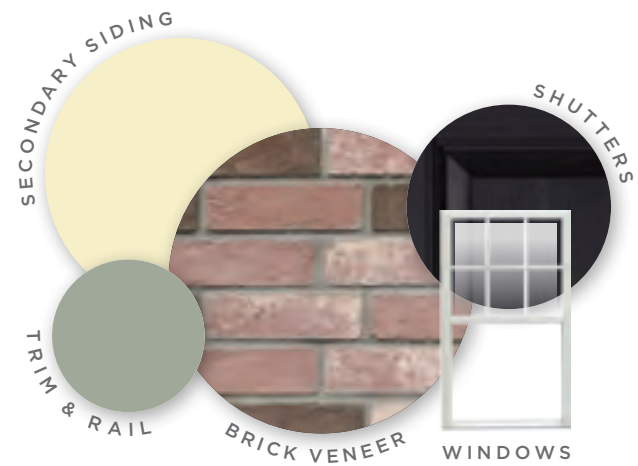


ENHANCE

Given a little more budget, a dignified Colonial Revival is possible. The addition of brick and a porch with a roof gives the home an entirely new look. A triple window with a six-over-one pattern replaces the original picture window and completes the steps necessary to make this house a classic.

The WASHINGTON

COLLECTION



Refer to the inside back cover for product specs.

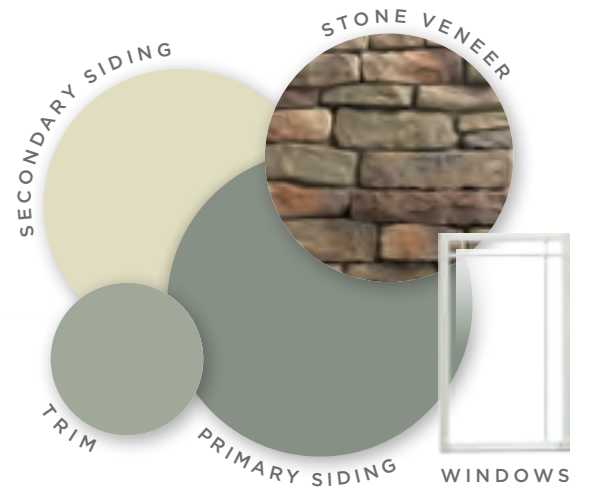
Unfortunately this mid-century Modern home has lost its contemporary appeal.



By celebrating its geometric shapes with window and door patterns, new chimney stone and a combination of horizontal and vertical siding, this house achieves a more modernized style.

The FIELDGRASS

COLLECTION



REFRESH



ENHANCE

By adding a guest-friendly front porch and carrying the fireplace stone across the entire base of the structure, this house transforms into the chic mid-century Modern it was intended to be.

The **LAKESIDE**
COLLECTION



Refer to the inside back cover for product specs.

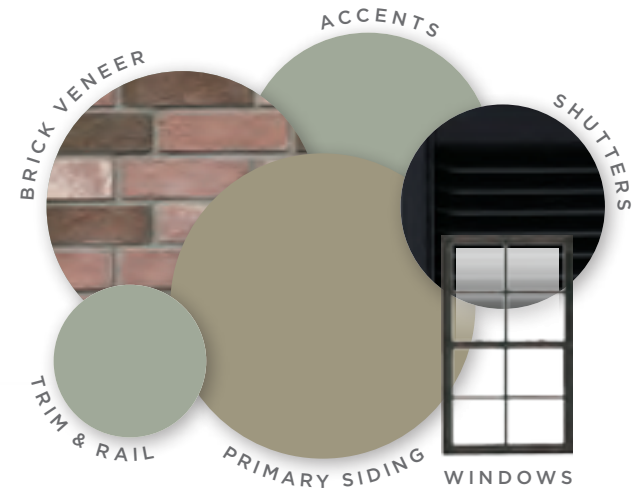
The intended style of this house is lost because its primary elements — arched beams, enormous roof and hidden brick — lack consistency.



The combination of false roof dormers, new — more prominent — front porch columns and brick wainscoting allows this house to embrace a Colonial Revival architectural style. By eliminating the arched beams and giving it a strong, dignified line, the front porch makes a statement.

The LINCOLNTON

COLLECTION



REFRESH



ENHANCE

This house was transformed into a traditional Craftsman style by first framing a gable and portico atop the overbearing roof, and then completed by adding stone, shakes and front porch pillars.

The **REDWOOD**
COLLECTION



Refer to the inside back cover for product specs.

The front entry of this ordinary home is lost — overwhelmed by battling gables and an unfortunately prominent garage that is flanked by brick, which acts like goal posts.



Colorful shakes along with louvered gable vents and brace supports adorn this home with style; while the addition of a secondary stone surface gives mass to the small gable area and helps lead guests to the front door.

The WEDGEWOOD COLLECTION

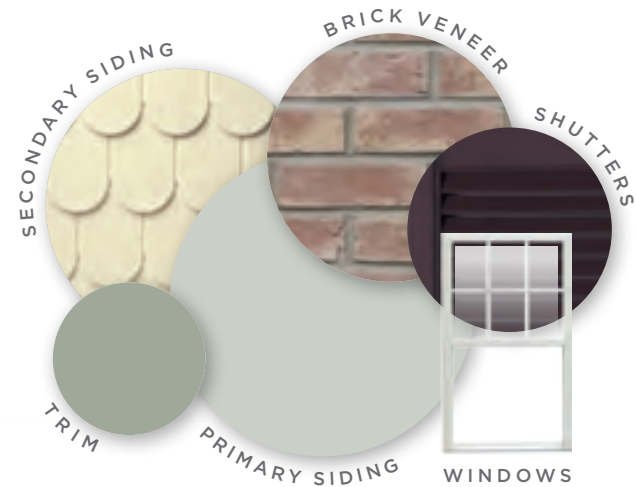




ENHANCE

This newly created Victorian ranch was fashioned by adding a front porch that emphasizes its entrance and prevents the garage from being the highest point on the house. Scallop shakes and brace supports along with playful colors and updated brick across the base lend authenticity to the refreshed style.

The **CAPE MAY**
COLLECTION



Refer to the inside back cover for product specs.

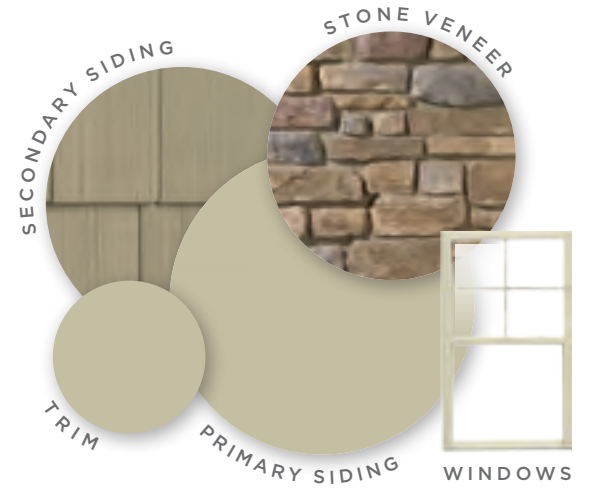
This 70s-style house is drab with unadorned windows and a front section that projects yet has no windows or other design elements.



Without changing the structure, but by adding classic louvered vents, two siding types and stone along its base, this house was given a chic new look.

The FAWN

COLLECTION



REFRESH



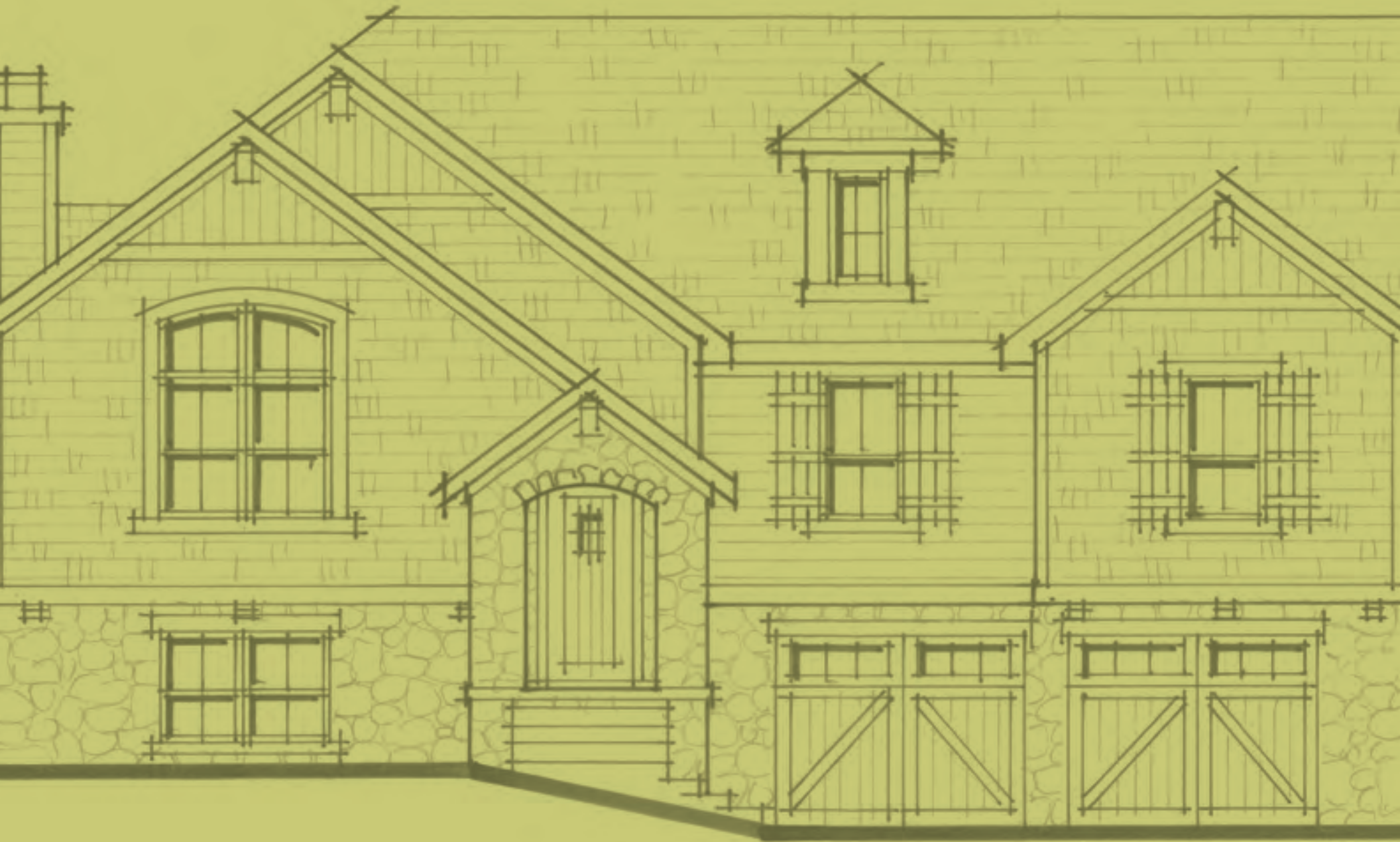
ENHANCE

The addition of a porch and framed gable on top of the original roof provides balance and makes the windowless element irrelevant. Yet it's the red shakes and Shadow Ledge stone that completely change this house into a Craftsman.

The **VISTA**
COLLECTION



Refer to the inside back cover for product specs.



SPLIT-LEVEL — HOMES —

Split-level construction was a trend that dominated new home creation throughout the 1960–70s. Yet more often than not, it lacked any sense of traditional residential architecture. Ply Gem has taken this challenge to heart and suggests that by adding a combination of materials, colors and textures, these once outdated home exteriors can become customized architectural looks.



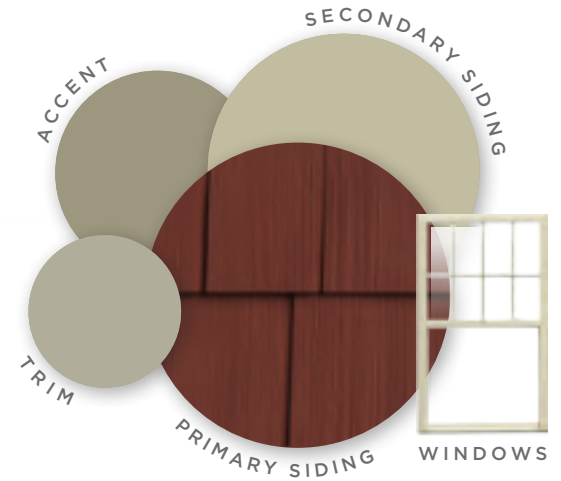
This example reveals one of the typical challenges found in split levels: it looks like two houses — a single story and a two story — pressed together. The pale, monotone color scheme is boring, and without a front porch, there's no defined point of entry.



Removing its ill-fitted shutters and blending a trio of siding profiles with warm colors, the look of this house is unified.

The EMBER

COLLECTION



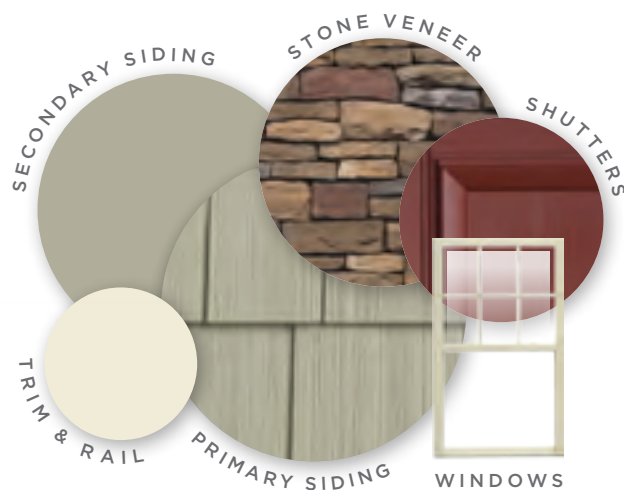


ENHANCE

A gabled porch provides a grand entry point and unites the two levels together. Stone, along with six-over-one windows, right-sized shutters and other accents give this home a Shingle-style appeal.

The BUCKSKIN

COLLECTION



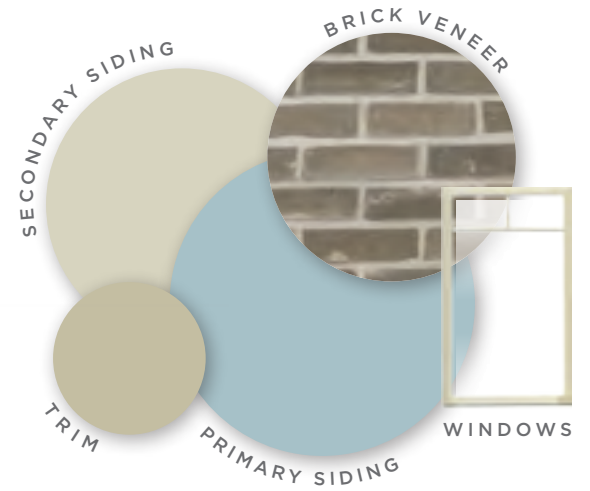
Refer to the inside back cover for product specs.

The garage door on this 70s-style house demands attention; while the combination of inconsistent detail elements prevent it from claiming a true style.



Adjusting siding profiles and adding a brick entrance column offsets the large garage door and brings balance to the look of this house. Additionally, Prairie-style window grids deliver architectural authenticity.

The STUDIO COLLECTION





ENHANCE

A hip roof is added to extend a new stone porch in front of the garage. The updated windows with thinner casements create a vertical contrast to the horizontal lines of the house.

The **MEADOWBROOK**
COLLECTION



Refer to the inside back cover for product specs.

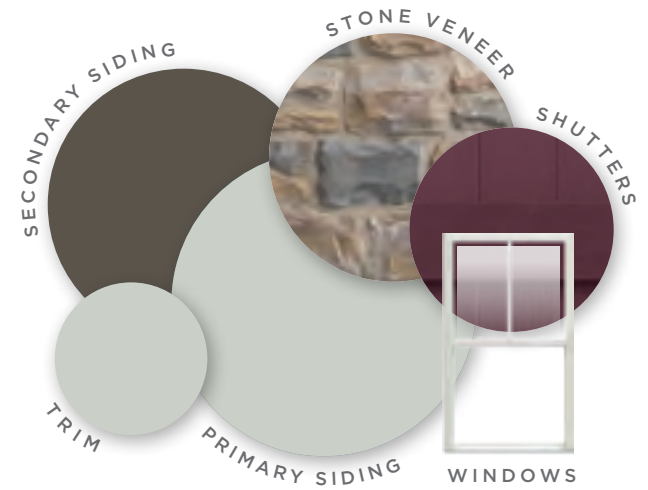
This drab, outdated exterior is monotonous and lacks both visual appeal and a welcoming front entrance.



The addition of columns creates a small, defined, front porch; while including stone and splashes of color bring visual interest and personality to this house.

The SUFFOLK

COLLECTION



REFRESH



ENHANCE

A gable, along with newly proportioned windows and updates to color and texture through both stone and siding, transform this into a charming, Shingle-style house.

The **AUTUMN**
COLLECTION



Refer to the inside back cover for product specs.

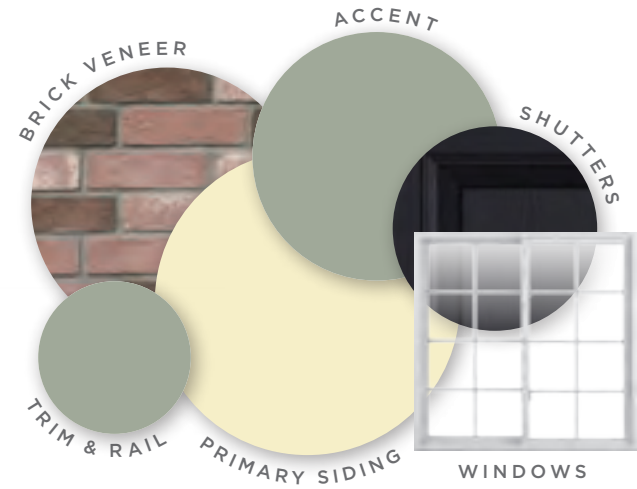
This colorless house looks outdated with its iron work columns, painted brick and window “wings.”



By adding substantial front porch columns, updating the windows with grids and incorporating brick with color, a Colonial-style exterior was created.

The QUEEN ANNE

COLLECTION





ENHANCE

Coordinated roof and front porch gables work well together and team up beautifully with the stone and siding profiles to transform this house into a Craftsman.

The SUNSET

COLLECTION



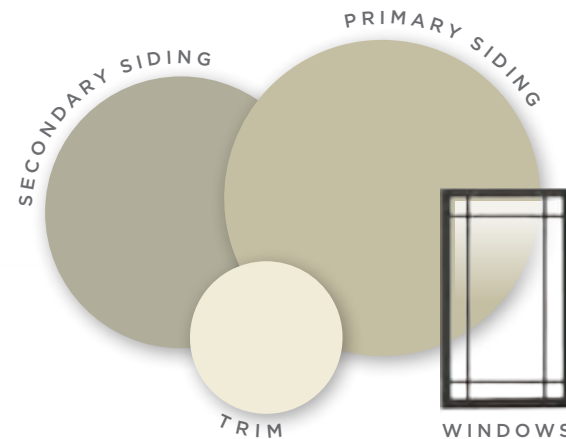
Refer to the inside back cover for product specs.

This monochromatic “challenge” with plain windows and no sense of entry, lacks balance and is overwhelmed by the garage and its gables.



Two different siding profiles give this house an architecturally interesting look, while the addition of black windows with prairie grids enhances its character.

The ELKHORN COLLECTION



REFRESH



ENHANCE

The overall look of this home is unified through its use of complementing stone and siding colors. Adding a front porch with formidable columns makes this house appear far more welcoming.

The PINE

COLLECTION



Refer to the inside back cover for product specs.

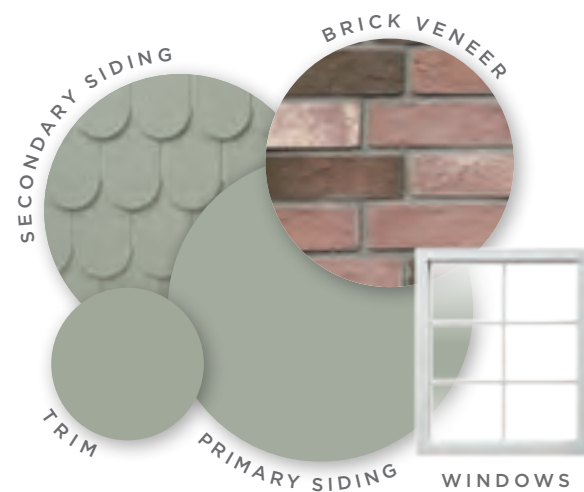
While it lacks discernible style and detail, the primary challenge with this home is the scale and balance of its components — such as the disproportionately large half-round window.



Simply adding accessory details to the gables and mixing siding styles assigns character and helps this newly created Victorian exterior to extend a warm welcome to guests.

The SOHO

COLLECTION



REFRESH



ENHANCE

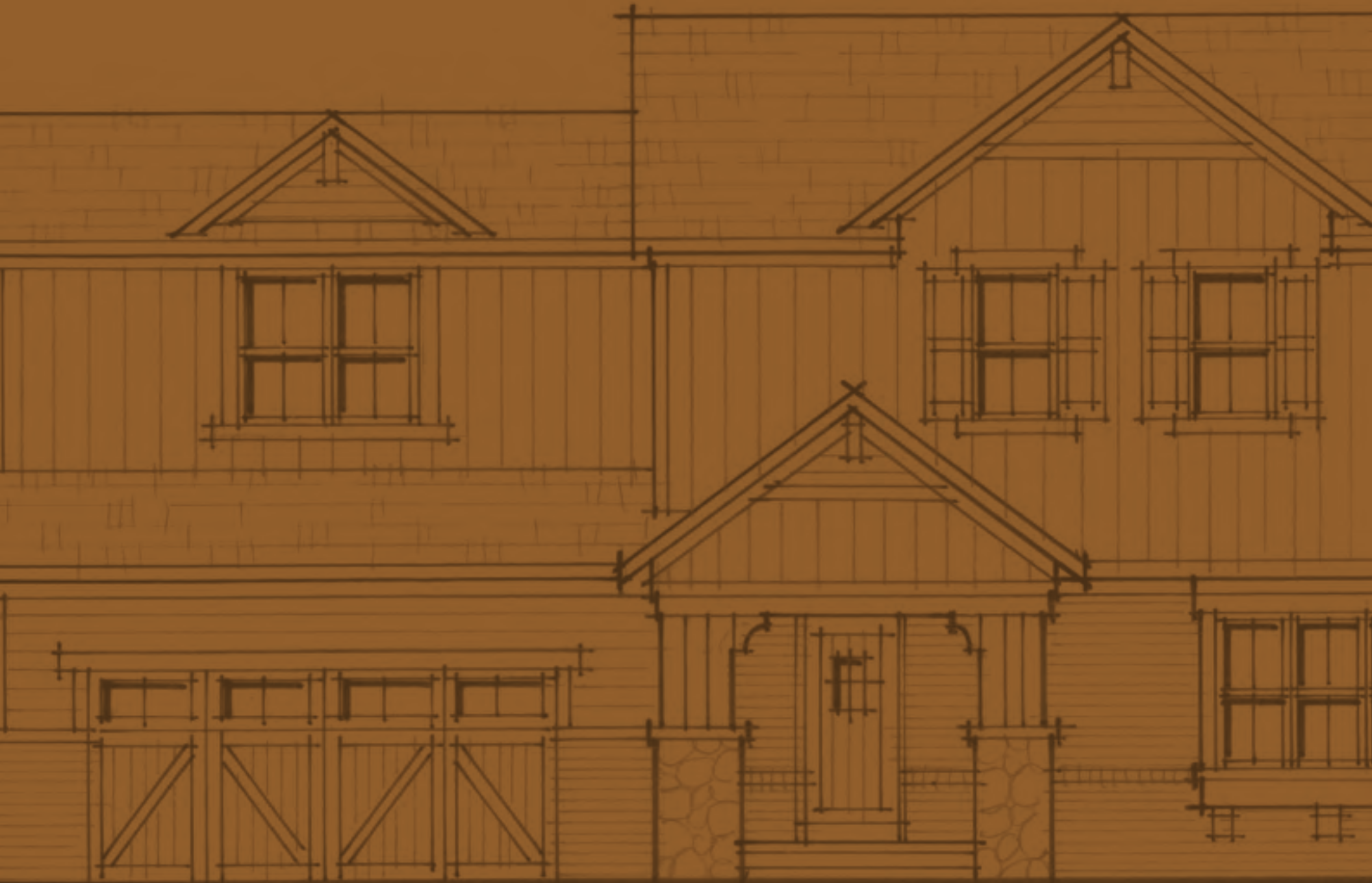
Creating this French Country look started with new windows. It is further stylized by adding a stone entryway, reducing the scale of the gables and utilizing two different siding profiles — shakes and Board-and-Batten.

The LODGE

COLLECTION



Refer to the inside back cover for product specs.



TWO-STORY — HOMES —

The interior space available in a two-story home allows families the room they need to comfortably spread out. Yet, all too often what works well inside the house presents homeowners with exterior design and curb appeal challenges.

Ply Gem makes it possible for you to explore the possibilities and create a home exterior that will be the envy of the neighborhood.



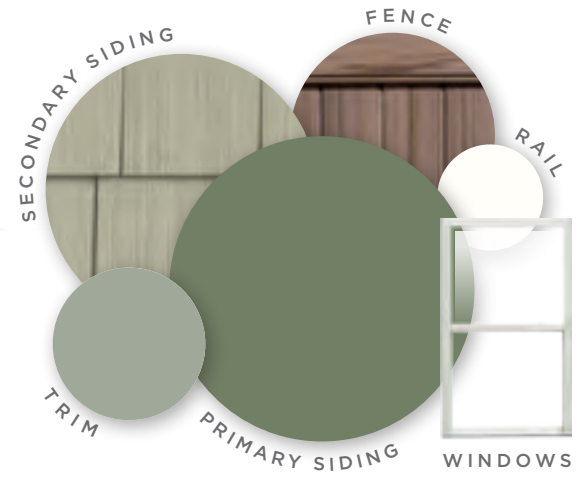
This charming house, with its friendly front porch, is bursting with potential but lacks the style and color to make it stand out in the neighborhood.



Minor changes to just the color and texture show the impact that a material change can have on the personality and look of a house.

The SLATE

COLLECTION



REFRESH



ENHANCE

The addition of a gable over the entry incorporates the porch into the main body of the house, while the stone delivers a vintage façade.

The DEER VALLEY

COLLECTION



Refer to the inside back cover for product specs.

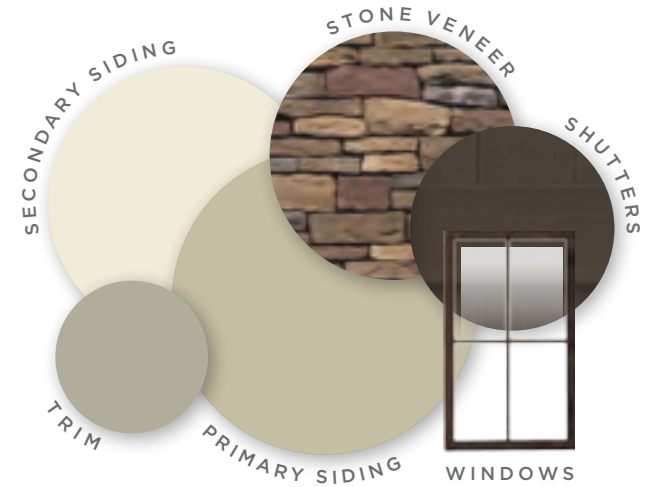
This typical 1980s house has no discernible style and is easy to miss with its dull color palette and horizontal lines. Also, since the porch roof sits below just one pair of windows, the overall appearance lacks symmetry.



Incorporating a variety of colors and textures introduced by the stone base, this completely updated exterior cleverly uses earth tones to create an original new look.

The TELLURIDE

COLLECTION





ENHANCE

By adding two gables to the roof line and a front porch, this house is thoroughly transformed. Incorporating splendid color and tapered column bases completes the Craftsman style.

The GRANITE

COLLECTION



Refer to the inside back cover for product specs.

Unfortunately this house misses the mark on a classic style. Its hexagon window above the entryway is out of scale, while the front door lacks welcoming charm.



Color vividly changes the personality of this home with new, white-trimmed windows. Adding a small single-hung window in the center of the second floor creates a Colonial Revival look.

The ADAMS

COLLECTION



REFRESH



ENHANCE

An entirely new Shingle-style home was fashioned by adding a warm stone base, shakes and a striking front porch. We paired-up the second-floor windows giving them a whole new look.

The SANDSTONE

COLLECTION



Refer to the inside back cover for product specs.

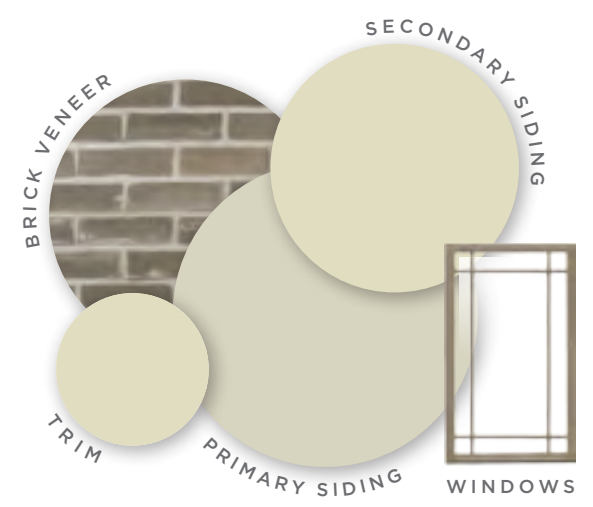
This once Modern house is severely outdated and unfortunately, its overall appearance is missing warmth and curb appeal. The lack of windows and odd proportions present a visual challenge.



To help bring balance, louvered vents were added as accents to either side of the new upper-level windows. Then, by also adding brick to the base of the house, Prairie-style architecture is introduced.

The STAINLESS

COLLECTION





ENHANCE

The newly added gables play a role in the transformation of this house. Then through color, as well as pairing stone with board and batten siding and shutters, this beautiful exterior has become a model for others in the neighborhood.

The **PEWTER**
COLLECTION



Refer to the inside back cover for product specs.

Narrow windows and an uninspired color choice prevent this house from impressing guests.



Widening the second floor windows and giving them a Craftsman grid pattern is a significant improvement. Design elements such as stone piers and brackets — to catch the floor above — contribute elegance to a once forgettable house.

The SAN ANDREAS

COLLECTION





ENHANCE

Converting the large overhang into a functional porch changes this house into a Craftsman style. The newly added dormer on the single-story side helps to give balance to the overall look.

The DAWN

COLLECTION



Refer to the inside back cover for product specs.

This house, with its enormous garage gable, lack of windows and pale color scheme, is missing design elements that will give it polish and charm.

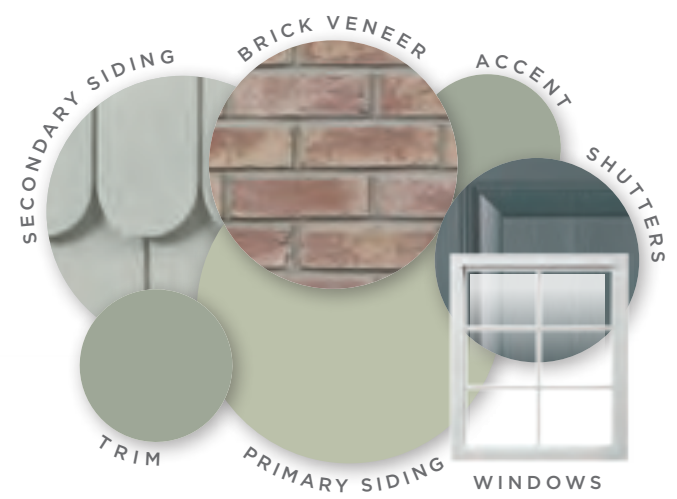


BEFORE

Crafted together, the use of scalloped shingles, brackets on the columns and gable details create a charming Folk Victorian home. The height of the front gable has been camouflaged by the use of a normal-sized window and a mix of siding types.

The GULLWING

COLLECTION



REFRESH



ENHANCE

A lovely French Country home exterior was created through the use of brick, stone and shakes. To lend balance to the oversized gable, a small false dormer was added over the front door.

The SAGE

COLLECTION



Refer to the inside back cover for product specs.

This house, with its generous front porch, unfortunately has a bulging garage that puts the focus in the wrong place. The vanilla color palette does not contribute eye appeal.



Newly added stone helps draw attention to the front door while the combination of coordinated textures and materials, such as gable vents, deliver a more balanced look overall.

The MAPLE

COLLECTION





ENHANCE

By over-framing with a second gable featuring a circle window, the location of the front door is highlighted. This enhancement fixes some of the architectural “wrongs” of the original house. Now, through the use of color and contrasting trim, a classic Shingle-style is possible.

The **LOREDO**
COLLECTION



Refer to the inside back cover for product specs.

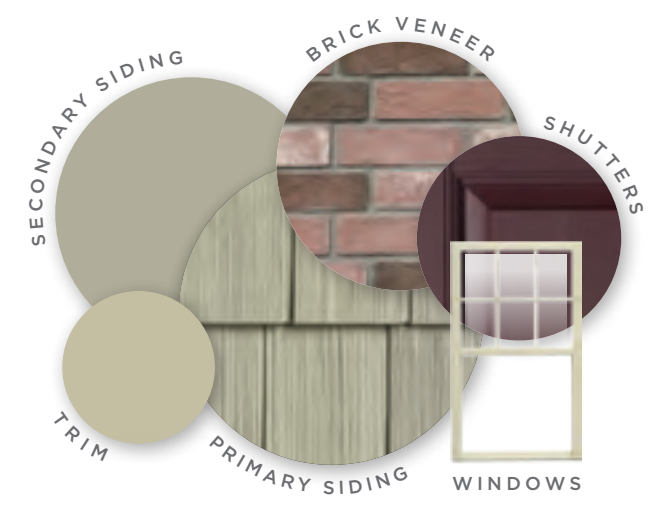
This 1970s-style house is missing personality and architectural character. The front entry is unprotected and lacks a warm welcome.



New windows, siding and stone veneer have transformed the uninspiring façade in the before photo into a handsome, charming exterior. Architectural features such as the shuttered, divided-lite windows create a stately appearance, while stone veneer and lap siding complete the traditional look of a Colonial.

The CABIN

COLLECTION



REFRESH



ENHANCE

Simple structural enhancements can have a dramatic effect. A front porch extends a welcome entry, while a second-story gable breaks up the roofline on this boxy 70s Colonial. Siding materials, windows, shutters and colors work together to create an eye-catching result.

The **BRONZE**
COLLECTION



Refer to the inside back cover for product specs.

You've decided the time is right to update the look of your house. At Ply Gem, we understand that this is just the first of many choices you'll need to make over the next few weeks. Therefore, as the complete exterior solution, we're here to help simplify the process.

Most homeowners prefer a step-by-step approach and while no two projects are the same, consider the following plan:



1 Decide the **scope**.

- How long do you plan to stay in your home? Short or long term?
- What are your remodeling goals? Increase efficiency? Reduce maintenance? Update the appearance?
- Establish a budget.
- Meet with contractors and select the one you feel most comfortable with.



2 Make your **selections**.

- What do you like or dislike about your house right now?
- Do you have design ideas? Colors you prefer? Styles you love?
- Visit the Design Studio at variform.com. Choose a home like yours and experiment with colors and textures. Create your own wish list and share it with your contractor.
- Set a project timeline.



3 **Enjoy!**

- Adore the new look and increased curb appeal.
- Experience more time enjoying your home and less time fixing and maintaining it.
- Benefit from increased energy efficiency.



The
Designed
Exterior™
by Ply Gem

JUST ADD INSPIRATION.

When you're embarking on a remodeling project, *The Designed Exterior™* by Ply Gem offers everything you need to make your dream home a reality. This complete solution allows you to create a beautiful, low-maintenance and distinctively custom-looking home exterior.



HOME NO.

REFRESH

HOME 1	the FERN COLLECTION PAGE 16
PRIMARY SIDING	Variform® Vortex Extreme™ D5 - Spanish Olive
SECONDARY SIDING	-
ACCENTS	Variform® Fascia, Soffit, Trim - Natural Almond / Ply Gem Raised Panel Shutters - Winestone
WINDOWS	Ply Gem Windows Premium Series - Double-Hung Windows - White
STONE	-
FENCE-RAIL	-
GUTTER	Leaf Relief® Gutter Protection / Combo System
HOME 2	the RIVERSTONE COLLECTION PAGE 18
PRIMARY SIDING	Variform® Vortex Extreme™ D4 - Irish Thistle
SECONDARY SIDING	-
ACCENTS	Variform® Fascia, Soffit, Trim - Classic Cream
WINDOWS	Ply Gem Windows Premium Series - Double-Hung & Picture Windows - Ivory
STONE	Ply Gem Stone Shadow LedgeStone - Easton
FENCE-RAIL	Ply Gem Fence and Railing Solid Privacy Fence - Natural Cedar
GUTTER	Leaf Relief® Gutter Protection / Combo System
HOME 3	the SANTA FE COLLECTION PAGE 20
PRIMARY SIDING	Variform® Contractor's Choice™ T3 - Stone Mountain Clay
SECONDARY SIDING	Variform® Vortex Extreme™ D4 - Sedona Red
ACCENTS	Variform® Fascia, Soffit, Trim - Island Pearl
WINDOWS	Ply Gem Windows Premium Series - Casement & Picture Windows - Ivory
STONE	-
FENCE-RAIL	-
GUTTER	Leaf Relief® Gutter Protection / Combo System
HOME 4	the STRAW COLLECTION PAGE 22
PRIMARY SIDING	Variform® Heritage Cedar® Perfection Shingle - Classic Cream
SECONDARY SIDING	Variform® Vortex Extreme™ D5 / Premium Solid Soffit D5 Installed as Vertical Siding - Stone Mountain Clay
ACCENTS	Variform® Fascia, Soffit, Trim - Natural Almond
WINDOWS	Ply Gem Windows Premium Series - Double-Hung & Picture Windows - Ivory
STONE	-
FENCE-RAIL	-
GUTTER	Leaf Relief® Gutter Protection / Combo System
HOME 5	the FIELDGRASS COLLECTION PAGE 24
PRIMARY SIDING	Variform® Vortex Extreme™ D4 - Sagebrook
SECONDARY SIDING	Variform® Board & Batten - Natural Almond
ACCENTS	Variform® Fascia, Soffit, Trim - Dover White
WINDOWS	Ply Gem Windows Premium Series - Picture Windows - White / French Patio Doors - White
STONE	Ply Gem Stone Shadow LedgeStone - Lehighton
FENCE-RAIL	-
GUTTER	Leaf Relief® Gutter Protection / Combo System
HOME 6	the LINCOLNTON COLLECTION PAGE 26
PRIMARY SIDING	Variform® Vortex Extreme™ D4 - Briarwood
SECONDARY SIDING	-
ACCENTS	Fascia, Soffit, Trim - Dover White / Window Mantels & Door Surrounds - White / Louvered Shutters - Black
WINDOWS	Ply Gem Windows Premium Series - Double-Hung & Picture Windows - Black
STONE	Ply Gem Stone Brick - Fulton Colonial
FENCE-RAIL	Ply Gem Fence and Railing Contour Rail - White
GUTTER	Leaf Relief® Gutter Protection / Combo System
HOME 7	the WEDGEWOOD COLLECTION PAGE 28
PRIMARY SIDING	Variform® Heritage Cedar® Perfection Shingle - Wedgewood
SECONDARY SIDING	Variform® ClimaForce™ D6 - Silver Mist
ACCENTS	Variform® Fascia, Soffit, Trim - Dover White / Ply Gem Rectangle Gable Vents - Dover White
WINDOWS	Ply Gem Windows Premium Series - Double-Hung Windows - White
STONE	Ply Gem Stone Brick - Fulton Colonial / Shadow LedgeStone - Shade Mountain
FENCE-RAIL	-
GUTTER	Leaf Relief® Gutter Protection / Combo System
HOME 8	the FAWN COLLECTION PAGE 30
PRIMARY SIDING	Variform® Vortex Extreme™ D4 - Sandy Tan
SECONDARY SIDING	Variform® Heritage Cedar® Perfection Shingle - Briarwood
ACCENTS	Variform® Fascia, Soffit, Trim - Sandy Tan
WINDOWS	Ply Gem Windows Premium Series - Double-Hung Windows - Ivory
STONE	Ply Gem Stone Ridgestone - Chardonnay
FENCE-RAIL	-
GUTTER	Leaf Relief® Gutter Protection / Combo System

ENHANCED

the HILLTOP COLLECTION PAGE 17
Variform® Vortex Extreme™ D5 - Stone Mountain Clay
Variform® Heritage Cedar® Perfection Shingle - Sedona Red
Variform® Fascia, Soffit, Trim - Briarwood
Ply Gem Windows Premium Series - Double-Hung Windows - Ivory
Ply Gem Stone Ridgestone - Shade Mountain
Ply Gem Fence and Railing Standard Rail - Khaki
Leaf Relief® Gutter Protection / Combo System
the UNIVERSITY COLLECTION PAGE 19
Variform® Vortex Extreme™ D4 - Sandy Tan
-
Variform® Fascia, Soffit, Trim - Dover White
Ply Gem Windows Premium Series - Casement Windows - White
Ply Gem Stone Brick - Clarion Colonial
Ply Gem Fence and Railing Solid Privacy Fence - Natural Cedar
Leaf Relief® Gutter Protection / Combo System
the REED COLLECTION PAGE 21
Variform® Heritage Cedar® Perfection Shingle - Stone Mountain Clay
Variform® Board & Batten - Island Pearl
Variform® Fascia, Soffit, Trim - Island Pearl
Ply Gem Windows Premium Series - Double-Hung Windows - Ivory
Ply Gem Stone Shadow LedgeStone - Bradford
Ply Gem Fence and Railing Over-The-Top - Sandstone
Leaf Relief® Gutter Protection and Hanging System
the WASHINGTON COLLECTION PAGE 23
-
Variform® Vortex Extreme™ D5 - Classic Cream
Variform® Fascia, Soffit, Trim - Dover White / Ply Gem Raised Panel Shutters - Black
Ply Gem Windows Premium Series - Double-Hung Windows - White
Ply Gem Stone Brick - Fulton Colonial
Ply Gem Fence and Railing T-Rail - White
Leaf Relief® Gutter Protection / Combo System
the LAKESIDE COLLECTION PAGE 25
Variform® Contractor's Choice™ T3 - Stone Mountain Clay
Variform® Heritage Cedar® Perfection Shingle - Sedona Red
Variform® Fascia, Soffit, Trim - Dover White
Ply Gem Windows Premium Series - Sliding & Picture Windows - White / French Patio Doors - White
Ply Gem Stone Ridgestone - Chardonnay
-
Leaf Relief® Gutter Protection / Combo System
the REDWOOD COLLECTION PAGE 27
Variform® Vortex Extreme™ D4 - Sandy Tan
Variform® Heritage Cedar® Hand-Split Shingle - Cabin Cedar
Variform® Fascia, Soffit, Trim - Dover White
Ply Gem Windows Premium Series - Double-Hung & Picture Windows - Bronze
Ply Gem Stone Cut Cobblestone - Winfield
Ply Gem Fence and Railing Standard Rail - White
Leaf Relief® Gutter Protection / Combo System
the CAPE MAY COLLECTION PAGE 29
Variform® Vortex Extreme™ D5 - Georgian Gray
Variform® Heritage Cedar® Round Cut Shingle - Classic Cream
Fascia, Soffit, Trim - Dover White / Rectangle Gable Vents - White / Louvered Shutters - Winestone
Ply Gem Windows Premium Series - Double-Hung Windows - White
Ply Gem Stone Brick - Chester Colonial
-
Leaf Relief® Gutter Protection / Combo System
the VISTA COLLECTION PAGE 31
Variform® Heritage Cedar® Hand-Split Shingle - Sedona Red
Variform® Vortex Extreme™ D5 - Stone Mountain Clay / Board & Batten - Briarwood
Variform® Fascia, Soffit, Trim - Sandy Tan
Ply Gem Windows Premium Series - Double-Hung Windows - Ivory
Ply Gem Stone Ridgestone - Buckingham
Ply Gem Fence and Railing T-Rail - Khaki
Leaf Relief® Gutter Protection / Combo System



HOME NO.	REFRESH	ENHANCED
HOME 9	the EMBER COLLECTION PAGE 34	the BUCKSKIN COLLECTION PAGE 35
	PRIMARY SIDING Variform® Heritage Cedar® Perfection Shingle - Sedona Red	Variform® Vortex Extreme™ D4 - Stone Mountain Clay
	SECONDARY SIDING Variform® ClimaForce™ D6 - Sandy Tan / Board & Batten - Briarwood	Variform® Heritage Cedar® Perfection Shingle - Stone Mountain Clay
	ACCENTS Variform® Fascia, Soffit, Trim - Stone Mountain Clay	Variform® Fascia, Soffit, Trim - Island Pearl / Ply Gem Raised Panel Shutters - Red
	WINDOWS Ply Gem Windows Premium Series - Casement, Double-Hung & Picture Windows - Ivory	Ply Gem Windows Premium Series - Double-Hung Windows - Ivory
	STONE -	Ply Gem Stone Shadow LedgeStone - Chardonnay
	FENCE+RAIL -	Ply Gem Fence and Railing Standard Rail - Tan
GUTTER Leaf Relief® Gutter Protection / Combo System	Leaf Relief® Gutter Protection / Combo System	
HOME 10	the STUDIO COLLECTION PAGE 36	the MEADOWBROOK COLLECTION PAGE 37
	PRIMARY SIDING Variform® Vortex Extreme™ D4 - Savannah Blue	Variform® Vortex Extreme™ D4 - Stone Mountain Clay
	SECONDARY SIDING Variform® Board & Batten - Silver Mist	-
	ACCENTS Variform® Fascia, Soffit, Trim - Sandy Tan	Variform® Fascia, Soffit, Trim - Briarwood
	WINDOWS Ply Gem Windows Premium Series - Casement & Picture Windows - Ivory	Ply Gem Windows Premium Series - Casement Windows - Sandalwood
	STONE Ply Gem Stone Brick - Clarion Colonial	Ply Gem Stone Shadow LedgeStone - Chardonnay
	FENCE+RAIL -	-
GUTTER Leaf Relief® Gutter Protection / Combo System	Leaf Relief® Gutter Protection / Combo System	
HOME 11	the SUFFOLK COLLECTION PAGE 38	the AUTUMN COLLECTION PAGE 39
	PRIMARY SIDING Variform® Contractor's Choice® T3- Georgian Gray	Variform® Heritage Cedar® Perfection Shingle - Briarwood
	SECONDARY SIDING Variform® Vortex Extreme™ D4 - Twilight Shadow	-
	ACCENTS Fascia, Soffit, Trim - Georgian Gray / Ply Gem Board & Batten 3-Board Closed Shutters - Vineyard Red	Variform® Fascia, Soffit, Trim - Dover White / Ply Gem Board & Batten 3-Board Closed Shutters - Red
	WINDOWS Ply Gem Windows Premium Series - Double-Hung & Sliding Windows - White	Ply Gem Windows Premium Series - Casement, Sliding & Picture Windows - Ivory
	STONE Ply Gem Stone Cut Cobblestone - Winfield	Ply Gem Stone Shadow LedgeStone - Shade Mountain
	FENCE+RAIL -	-
GUTTER Leaf Relief® Gutter Protection / Combo System	Leaf Relief® Gutter Protection / Combo System	
HOME 12	the QUEEN ANNE COLLECTION PAGE 40	the SUNSET COLLECTION PAGE 41
	PRIMARY SIDING Variform® Vortex Extreme™ D4 - Classic Cream	Variform® Vortex Extreme™ D5 - Sagebrook
	SECONDARY SIDING -	Variform® Heritage Cedar® Perfection Shingle - Sedona Red / Premium Solid Soffit D5 Installed as Vertical Siding - Sandy Tan
	ACCENTS Fascia, Soffit, Trim - Dover White / Window & Garage Mantels - White / Raised Panel Shutters - Black	Variform® Fascia, Soffit, Trim - Sandy Tan
	WINDOWS Ply Gem Windows Premium Series - Sliding Windows - White	Ply Gem Windows Premium Series - Casement Windows - Cottage Red
	STONE Ply Gem Stone Brick - Fulton Colonial	Ply Gem Stone Shadow LedgeStone - Chardonnay
	FENCE+RAIL Ply Gem Fence and Railing Custom Design Rail - White	Ply Gem Fence and Railing Standard Rail - Khaki
GUTTER Leaf Relief® Gutter Protection / Combo System	Leaf Relief® Gutter Protection / Combo System	
HOME 13	the ELKHORN COLLECTION PAGE 42	the PINE COLLECTION PAGE 43
	PRIMARY SIDING Variform® Board & Batten - Sandy Tan	Variform® Vortex Extreme™ D5 / Board & Batten - Irish Thistle
	SECONDARY SIDING Variform® Vortex Extreme™ D4 - Stone Mountain Clay	Variform® Heritage Cedar® Perfection Shingle - Spanish Olive
	ACCENTS Variform® Fascia, Soffit, Trim - Island Pearl	Variform® Fascia, Soffit, Trim - Dover White
	WINDOWS Ply Gem Windows Premium Series - Casement & Picture Windows - Black	Ply Gem Windows Premium Series - Casement Windows - Cottage Red
	STONE -	Ply Gem Stone Shadow LedgeStone - Easton
	FENCE+RAIL -	Ply Gem Fence and Railing Contour Rail with Custom Post - White
GUTTER Leaf Relief® Gutter Protection / Combo System	Leaf Relief® Gutter Protection / Combo System	
HOME 14	the SOHO COLLECTION PAGE 44	the LODGE COLLECTION PAGE 45
	PRIMARY SIDING Variform® Board & Batten - Flint	Variform® Heritage Cedar® Perfection Shingle - Irish Thistle
	SECONDARY SIDING Variform® Heritage Cedar® Round Cut Shingle - Flint	Variform® Vortex Extreme™ D4 - Briarwood
	ACCENTS Variform® Fascia, Soffit, Trim - Dover White	Fascia, Soffit, Trim - Briarwood / Board & Batten - Briarwood / Board & Batten 3-Board Closed Shutters - Spanish Moss
	WINDOWS Ply Gem Windows Premium Series - Picture & Architectural Shape Windows - White	Ply Gem Windows Premium Series - Awning, Picture & Architectural Shape Windows - Taupe
	STONE Ply Gem Stone Brick - Fulton Colonial	Ply Gem Stone Tuscan Fieldstone - Shenandoah
	FENCE+RAIL -	-
GUTTER Leaf Relief® Gutter Protection / Combo System	Leaf Relief® Gutter Protection / Combo System	

Note: The products listed in this field guide are approximations of colors and styles represented in the renderings. Consult the *Variform Product Guide* and product color samples for actual product specifications.



TWO-STORY HOMES PRODUCT SPECS

HOME NO.

REFRESH

HOME 15	the SLATE COLLECTION	PAGE 48
PRIMARY SIDING	Variform® Vortex Extreme™ D4 - Mediterranean Palm	
SECONDARY SIDING	Variform® Heritage Cedar® Perfection Shingle - Stone Mountain Clay	
ACCENTS	Variform® Fascia, Soffit, Trim - Dover White	
WINDOWS	Ply Gem Windows Premium Series - Double-Hung, Sliding, Casement & Architectural Shape Windows - White	
STONE	-	
FENCE+RAIL	Ply Gem Fence and Railing Solid Privacy - Woodland Select™ Weathered Cedar / Standard Rail - White	
GUTTER	Leaf Relief® Gutter Protection / Combo System	
HOME 16	the TELLURIDE COLLECTION	PAGE 50
PRIMARY SIDING	Variform® Vortex Extreme™ D4 - Sandy Tan	
SECONDARY SIDING	Variform® Board & Batten - Island Pearl	
ACCENTS	Fascia, Soffit, Trim - Stone Mountain Clay / Ply Gem Board & Batten 3-Board Open Shutters - Brown	
WINDOWS	Ply Gem Windows Premium Series - Casement & Picture Windows - Bronze	
STONE	Ply Gem Stone Shadow LedgeStone - Chardonnay / Accessories - Brown	
FENCE+RAIL	-	
GUTTER	Leaf Relief® Gutter Protection / Combo System	
HOME 17	the ADAMS COLLECTION	PAGE 52
PRIMARY SIDING	Variform® Vortex Extreme™ D4 - Sedona Red	
SECONDARY SIDING	-	
ACCENTS	Variform® Fascia, Soffit, Trim - Dover White / Ply Gem Window & Garage Mantels - White	
WINDOWS	Ply Gem Windows Premium Series - Double-Hung Windows - White	
STONE	Ply Gem Stone Brick - Monroe Colonial	
FENCE+RAIL	-	
GUTTER	Leaf Relief® Gutter Protection / Combo System	
HOME 18	the STAINLESS COLLECTION	PAGE 54
PRIMARY SIDING	Variform® ClimaForce™ D6 - Silver Mist	
SECONDARY SIDING	Variform® Contractor's Choice™ T3 - Natural Almond	
ACCENTS	Variform® Fascia, Soffit, Trim - Natural Almond	
WINDOWS	Ply Gem Windows Premium Series - Casement & Picture Windows - Sandalwood	
STONE	Ply Gem Stone Brick - Clarion Colonial	
FENCE+RAIL	-	
GUTTER	Leaf Relief® Gutter Protection / Combo System	
HOME 19	the SAN ANDREAS COLLECTION	PAGE 56
PRIMARY SIDING	Variform® Heritage Cedar® Perfection Shingle - Georgian Gray	
SECONDARY SIDING	Variform® Vortex Extreme™ D4 - Flint	
ACCENTS	Variform® Fascia, Soffit, Trim - Dover White	
WINDOWS	Ply Gem Windows Premium Series - Double-Hung & Picture Windows - Black	
STONE	Ply Gem Stone Cobblestone - Shade Mountain / Accessories - Brown	
FENCE+RAIL	-	
GUTTER	Leaf Relief® Gutter Protection / Combo System	
HOME 20	the GULLWING COLLECTION	PAGE 58
PRIMARY SIDING	Variform® Vortex Extreme™ D5 - Spanish Olive	
SECONDARY SIDING	Variform® Heritage Cedar® Round Cut Shingle - Georgian Gray / Board & Batten - Dover White	
ACCENTS	Variform® Fascia, Soffit, Trim - Dover White / Ply Gem Raised Panel Shutters - Dark Spruce	
WINDOWS	Ply Gem Windows Premium Series - Casement & Picture Windows - White	
STONE	Ply Gem Stone Brick - Chester Colonial	
FENCE+RAIL	-	
GUTTER	Leaf Relief® Gutter Protection / Combo System	
HOME 21	the MAPLE COLLECTION	PAGE 60
PRIMARY SIDING	Variform® Vortex Extreme™ D4 - Natural Almond	
SECONDARY SIDING	Variform® Heritage Cedar® Perfection Shingle Siding - Cabin Cedar	
ACCENTS	Variform® Fascia, Soffit, Trim - Dover White	
WINDOWS	Ply Gem Windows Premium Series - Casement & Picture Windows - Ivory	
STONE	Ply Gem Stone Brick - Clarion Colonial / LedgeStone - Chardonnay / Accessories - Country	
FENCE+RAIL	Ply Gem Fence and Railing T-Rail with Custom Post - White	
GUTTER	Leaf Relief® Gutter Protection / Combo System	
HOME 22	the CABIN COLLECTION	PAGE 62
PRIMARY SIDING	Variform® Heritage Cedar® Perfection Shingle - Stone Mountain Clay	
SECONDARY SIDING	Variform® Vortex Extreme™ D5 - Stone Mountain Clay	
ACCENTS	Fascia, Soffit, Trim - Sandy Tan / Rectangular Gable Vent - Sandy Tan / Ply Gem Raised Panel Shutters - Winestone	
WINDOWS	Ply Gem Windows Premium Series - Double-Hung Windows - Ivory	
STONE	Ply Gem Stone Brick - Fulton Colonial	
FENCE+RAIL	-	
GUTTER	Leaf Relief® Gutter Protection / Combo System	

ENHANCED

the DEER VALLEY COLLECTION	PAGE 49
Variform® Heritage Cedar® Perfection Shingle - Teak	
-	
Variform® Fascia, Soffit, Trim - Island Pearl / Heritage Cedar® Perfection Shingle Corner Posts - Teak	
Ply Gem Windows Premium Series - Double-Hung, Casement & Picture Windows - White	
Ply Gem Stone Shadow LedgeStone - Shade Mountain	
Ply Gem Fence and Railing Solid Privacy - Woodland Select™ Natural Cedar / Standard Rail - White	
Leaf Relief® Gutter Protection / Combo System	
the GRANITE COLLECTION	PAGE 51
Variform® Heritage Cedar® Perfection Shingle - Spanish Olive	
Variform® Vortex Extreme™ D5 - Spanish Olive / Board & Batten - Irish Thistle	
Variform® Fascia, Soffit, Trim - Dover White	
Ply Gem Windows Premium Series - Double-Hung Windows - Evergreen	
Ply Gem Stone Shadow LedgeStone - Shade Mountain	
Ply Gem Fence and Railing Standard Rail - White	
Leaf Relief® Gutter Protection / Combo System	
the SANDSTONE COLLECTION	PAGE 53
Variform® Heritage Cedar® Perfection Shingle - Autumn Beige	
Variform® Vortex Extreme™ D4 - Briarwood	
Fascia, Soffit, Trim - Dover White / Ply Gem Board & Batten Shutters - Dark Berry / Monticello® Square Fluted Columns - White	
Ply Gem Windows Premium Series - Double-Hung Windows - White	
Ply Gem Stone Shadow LedgeStone - Bradford	
Ply Gem Fence and Railing Standard Rail - White	
Leaf Relief® Gutter Protection / Combo System	
the PEWTER COLLECTION	PAGE 55
Variform® Board & Batten - Flint	
Variform® Vortex Extreme™ D4 - Pewter	
Fascia, Soffit, Trim - Dover White / Ply Gem Board & Batten 4-Board Open Shutters - Black	
Ply Gem Windows Premium Series - Double-Hung Windows - White	
Ply Gem Stone Cut Cobblestone - Winfield / Accessories - Cream	
-	
Leaf Relief® Gutter Protection / Combo System	
the DAWN COLLECTION	PAGE 57
Variform® Vortex Extreme™ D5 - Stone Mountain Clay	
Variform® Heritage Cedar® Perfection Shingle - Cabin Cedar / Board & Batten - Stone Mountain Clay	
Fascia, Soffit, Trim - Natural Almond / Ply Gem Board & Batten 3-Board Open Shutters - Red	
Ply Gem Windows Premium Series - Double-Hung Windows - Ivory	
Ply Gem Stone Shadow LedgeStone - Bradford / Accessories - Cream	
Ply Gem Fence and Railing Contour Rail with Custom Posts - Khaki	
Leaf Relief® Gutter Protection / Combo System	
the SAGE COLLECTION	PAGE 59
Variform® Heritage Cedar® Perfection Shingle - Spanish Olive	
-	
Fascia, Soffit, Trim - Natural Almond / Ply Gem Board & Batten 3-Board Open Shutters - Spanish Moss	
Ply Gem Windows Premium Series - Casement, Double-Hung & Picture Windows - Ivory	
Ply Gem Stone Brick - Clarion Colonial / Cut Cobblestone - Winfield / Accessories - Cream	
-	
Leaf Relief® Gutter Protection / Combo System	
the LOREDO COLLECTION	PAGE 61
Variform® Heritage Cedar® Perfection Shingle - Cottage Gray	
-	
Fascia, Soffit, Trim - Graphite Gray / Ply Gem Garage Mantel, Painted - Flint	
Ply Gem Windows Premium Series - Double-Hung & Operational Architectural Shape Windows - Ivory	
Ply Gem Stone Cut Cobblestone - Winfield	
-	
Leaf Relief® Gutter Protection / Combo System	
the BRONZE COLLECTION	PAGE 63
Variform® Heritage Cedar® Perfection Shingle - Twilight Shadow	
-	
Fascia, Soffit, Trim - Dover White / Rectangular Gable Vent Painted - Winestone / Ply Gem Raised Panel Shutters - Winestone	
Ply Gem Windows Premium Series - Double-Hung & Architectural Shape Windows - White	
Ply Gem Stone Shadow LedgeStone - Shade Mountain	
-	
Leaf Relief® Gutter Protection / Combo System	

DETAILED IMPRESSION.

The Designed Exterior™ by Ply Gem combines eye-catching colors and textures — intended to work together — to deliver a distinctively custom home exterior that will reflect your personal sense of style.

Start creating your own curb appeal by visiting the Designed Exterior Studio at plygem.com.

There's no time like the present to begin planning.

Using *The Designed Exterior™* by Ply Gem, you can explore the possibilities and beautifully transform your ideas and goals into the home you've always dreamed of.

Visit variform.com



THE DESIGNED EXTERIOR

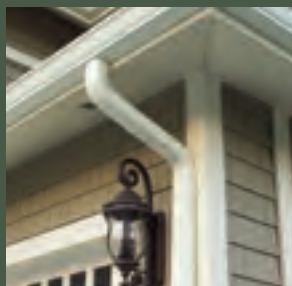




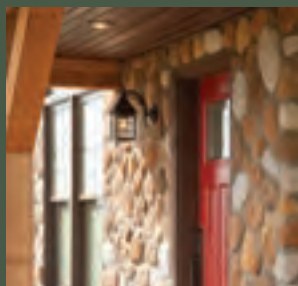
Vinyl Siding and Accent Panels



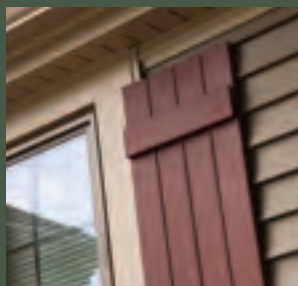
Gutter Protection



Rainware, Fascia, Soffit



Ply Gem Stone



Ply Gem Shutters and Accents



Ply Gem Fence and Railing

2600 Grand Blvd., Suite 900 • Kansas City, MO 64108 • Phone: (800) 800.2244 • Fax: (800) 800.0077 • www.variform.com

Due to printing limitations colors may not be exactly as shown. Contact your distributor for actual product samples.

Variform and the Variform logo are trademarks of Variform, Inc. Ply Gem, Ply Gem Shutters and Accents, Ply Gem Fence and Railing, and Leaf Relief® are trademarks of Ply Gem Industries, Inc. and/or its subsidiaries © 2014 Variform, Inc. 1105129911101/BT/CG/0714

Printed with environmentally sensitive vegetable based inks.