



Residential Builders Program

NanaWall
Engineering the Exceptional



Leesville Crest – Fairmont Model, Raleigh NC
 NanaWall Aluminum Framed Folding System SL45 with swing door
 Builder: Ashton Woods Homes

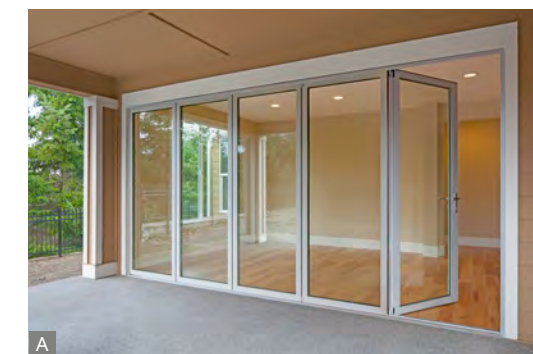
Trusted to be included in many of the industry's sought after new residential developments, NanaWall Systems understands the specialized requirements of the production builder. Our individually tailored builders program includes expedited manufacturing and delivery as well as a single point of contact to ensure accuracy and professional communication from design conception to installation.

NanaWall Residential Builders Program

- Builder specific pricing and factory direct purchasing.
- Model Home, Sales Office, and Parade of Homes program available.
- Cooperative advertising program available to assist in sales.
- Meet construction schedules through accelerated production lead times through NanaWall Stocking Program.
- On-time jobsite delivery coordinated with your project's construction schedule.
- Operational training and product support for both the sales staff and the end user via our nationwide network of sales and technical representatives.
- National teams of certified independent installers and on-site service technicians backed by our Parts and Service Department in Corte Madera, CA.

Program Benefits for the Builder

- Use NanaWall Systems' brand recognition to assist in moving inventory while maximizing your return on investment.
- Increase property values by choosing the leading brand in opening glass walls.
- Outsell your competitors by including the value-added amenity of a NanaWall opening glass wall.
- Create a competitive design advantage with enhanced outdoor living sales opportunities.
- Increase model home walk-thrus that generate buzz and share of mind to champion your brand.



A Shea Homes at Jubilee, Lacey WA
 NanaWall Aluminum Framed Folding System SL60
 with swing door
 Builder: Shea Homes



B Willow Bend, Irvine CA
 NanaWall Aluminum Framed Folding System SL45
 with swing door
 Builder: William Lyon Homes

NANAWALL SYSTEMS FOR RESIDENTIAL BUILDERS

NanaWall opening glass walls offer countless choices for wide-open space, flexible interior areas, and secure weather protection. Glass panels glide effortlessly on NanaWall engineered hardware to create large inviting openings that seamlessly integrate indoor and outdoor spaces. When closed, the panels form a rattle and draft free barrier from inclement weather.

- Choose from over 20 different systems to match any home design with options of wood, aluminum color/finish, glazing, and divided lites.
- Choice of floor supported or top-hung systems and inward or outward configurations.
- Control construction costs. NanaWall floor supported technology option requires less header load and limits the need for extensive pre-cambering.
- Systems are made-to-measure to your specifications and local building code requirements.
- Select a system engineered for design relevance and long-term durability.
- NanaWall engineering ensures call back minimization.
- Known for long-term durability and performance, NanaWall systems provide protection from water and air infiltration, sound buffering and superior energy efficiency when the wall is closed.
- Experience all the benefits that NanaWall large openings are known for in a Not so Wide® space.
- Provide your residential buyer with our available screening options.



A Nolan Woods, Woodinville WA
NanaWall Aluminum Clad Wood Framed Folding System WA67
with swing door
Builder: Parmenter Homes

B Alpine Homes Canada - Silvertip Heights, Alberta
NanaWall Aluminum Clad Wood Framed Folding System WA67
with swing door
Builder: Unity Builders Group

Manor Garden Apartments, Hoboken NJ
NanaWall Aluminum Framed Folding System SL60
Builder: Red Bridge Homes

RESIDENTIAL APPLICATIONS

Single Family Residential

NanaWall opening glass walls redefine your single family home buyer's living experience. Transform fixed walls into flexible openings that invite the outside in and remove visual and physical barriers. Homeowners enjoy the expanded living environment, yet stay comfortable with a transparent barrier that protects—no matter what the climate or seasonal extreme.

- Provide the sought after indoor/outdoor lifestyle that becomes a daily part of life in all seasons.
- Offer a NanaWall system throughout the residential development, or as an upgrade option.

Multifamily Residential

NanaWall systems provides building owners, architects, property managers, homeowner associations, and contractors with a solution for increasing usable space, enhancing each unit's value and the marketability of the entire development.

- Respond to consumer demand and differentiate the multifamily property from others on the market by creating a greater sense of space through the use of NanaWall opening glass walls on balconies, porches, and even Juliet balconies.
- Benefit from high wind load and air-and-water infiltration performance making NanaWall systems suitable for high rise applications.
- Create double skinned, energy efficient outdoor rooms out of enclosed balconies with the NanaWall SL25 frameless system.



A Lumen Condos, Seattle WA
NanaWall Aluminum Framed Thermally Broken
Folding System SL70 with swing door
Builder: Lumen Design+Build



Trilogy at Redmond Ridge, Redmond WA • NanaWall Aluminum Framed • Folding System SL60 with swing door • Builder: Shea Homes



B Justison Landing, Wilmington DE
NanaWall Aluminum Framed Thermally Broken
Folding System SL60
Builder: The Buccini/Pollin Group

Prefabricated Residential

Use NanaWall's exceptional engineering and energy efficiency to complement the design of prefabricated homes. Prefabricated home builder's construction requirements differ from those of our other customers. NanaWall understands and has a solutions package available for the prefab builder's folding glass wall requirements.

- Like today's prefab homes, NanaWall's engineering surpasses expectations.
- NanaWall floor supported technology option requires less header load and offers the prefab builder easier height adjustability should building movement occur.
- Systems can be adjusted for deflection: up, down, inward and outward.



NanaWall FoldFlat®

The FoldFlat option is available in aluminum (SL45) and wood (WD65). The panels fold and then pivot all the way back to stack out of and parallel to the opening.

NanaWall Open Corners

Create dramatic open corners requiring no structural post—the corners close securely end-to-end and the panels may include one or more entry/egress doors.



NanaWall Screen Systems

For environments that require seasonal insect control, keep the bugs out while enjoying the large open expanse that a NanaWall delivers.



NanaWall Floor Supported Technology Option

NanaWall offers folding glass walls in both top-hung and floor supported options. We are able to recommend the best choice for each project.

- Floor supported systems offer the same weather protection, performance, and testing as expected from our top-hung systems.
- Floor supported systems are durable and offer much smoother operation with stainless steel wheels on a stainless steel track.
- Floor supported systems offer easier height adjustability should building movement occur—be it from heavy snow loads or building settling over time.



Performance When Closed

When the NanaWall is closed, the unequalled energy efficient design keeps the cold air on the outside while maintaining comfort inside—even right up against the glass and frames.





Standard 50 Finishes for Aluminum and Clad Systems

50 standard colors are available in powder coat and anodized finishes. For accurate color swatch examples, please request our Powder Coating Finish Options brochure.

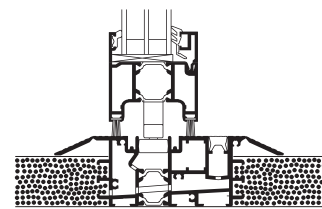


Wood Finish Options for WD65, WD66, and WA67

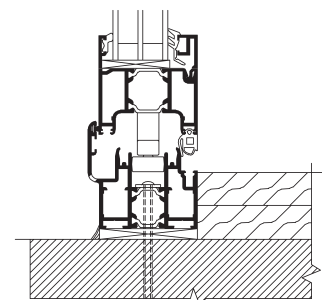
Choose from Douglas fir, pine, western hemlock, meranti, oak, sapeli mahogany, and other selected woods. For accurate color examples, please request our Wood & Finish Options brochure.

SL60 Sill Option Choices

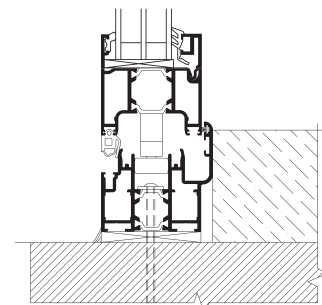
Low Profile Saddle Sill (inswing or outswing)



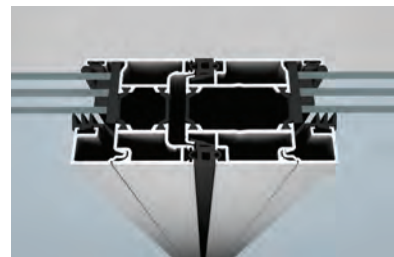
Higher Weather Performance Sill (inswing)



Higher Weather Performance Sill (outswing)



NanaWall Performance Features for the Aluminum Framed Folding System SL60



Weather Resistance

Double gaskets provide weather resistant comfort. The superior thermal break design maximizes interior energy efficiency whatever the weather extreme. Triple glazing is a standard option.



Multi-Point Locking

Concealed multi-point locking operates with the turn of a handle. The top and bottom shoot bolts have approximately a 1" (25 mm) throw for maximum security.



Long-Term Performance

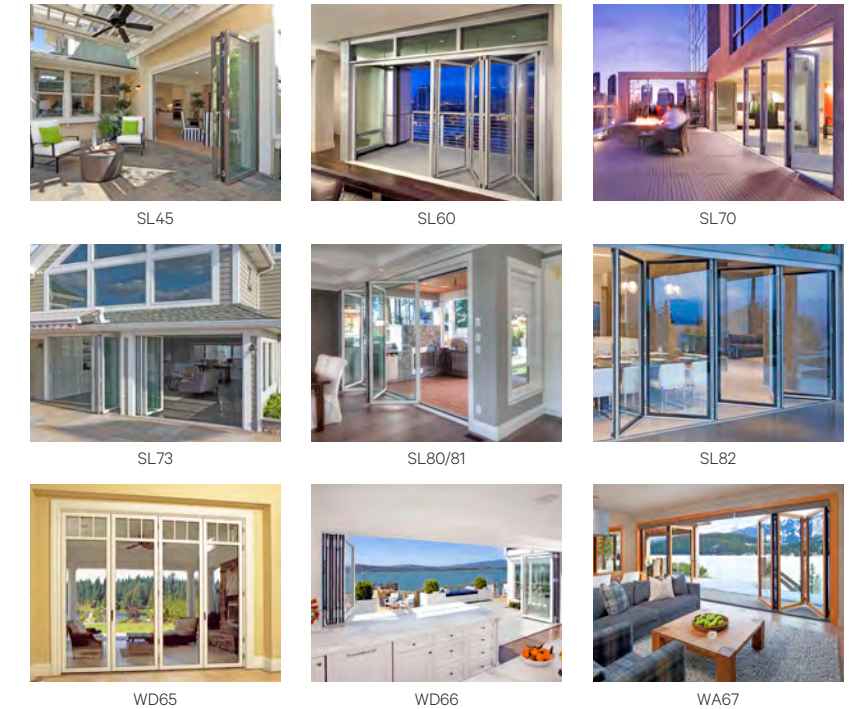
Built-in adjustment and compensation points ensure continued ease of operation if some building settling occurs.

 **Folding Glass Walls**

Nine structurally distinct systems of connected bi-fold door panels offer hundreds of configurations and options for size, hardware, and performance. Choose from all aluminum with over 200 custom colors, 100% solid wood frames, an edge-to-edge all glass system, or an aluminum clad system.

Features

- Top-hung or floor supported models, inward or outward openings, or center pivot.
- Panel heights of up to 12' (3660 mm) and widths of 4' (1220 mm) are possible.
- Meets or exceeds industry standards for air infiltration, water penetration, structural performance, acoustical attenuation, forced entry, and extreme weather protection.
- Convenient swing entry doors may be hinged to a side jamb or be configured within the chain of panels with door closer and panic hardware options available.
- Moving structural posts provide unparalleled strength in our Miami-Dade County and AAMA hurricane approved folding system SL73.
- Systems provide effortless one hand operation.





Single Track Sliding Glass Walls



Frameless Glass Walls

Visit nanawall.com for more Single Track Sliding and Frameless product information.

NanaWall Systems—Uncompromised Quality

Every American-made and German engineered NanaWall system is backed by rigorous system testing, improvement, and high-grade materials resulting in unsurpassed durability and exceptional long-term performance.

- Independently tested performance results for wind, water, and structural load, forced entry, impact, and thermal performance. STC for sound transmission are available for select systems.
- Built-in adjustment and compensation points for both top-hung and floor supported systems ensure continued ease of operation if building settling occurs.
- Panels are available up to 10' in height without the need of a mullion for the SL70 system.
- Systems are able to meet Energy Star requirements with glazing choices to achieve U-values ranging from .17 to .32 and SHGC of .25.



WE ENGINEER THE EXCEPTIONAL

NanaWall redefined the category of opening glass wall systems. During our 25-plus years in business, we have earned the trust of architects, builders, design professionals, and homeowners as a solutions provider for re-imagining how buildings, people, and the elements interact. By combining precision engineering and outstanding design options across more than 20 unique systems, we advance design possibilities beyond the conventional for almost any space.